

# Phospho S232 PDH E1 alpha protein (PDHA1) Profiling ELISA Kit ab115343

4 References 4 图像

概述

产品名称

检测方法

精确度

样品类型

检测类型

灵敏度

范围

实验步骤

种属反应性

产品概述

说明

Phospho S232 PDH E1 alpha蛋白(PDHA1) Profiling ELISA试剂盒

Colorimetric

批次内

样品	n	Mean	SD	CV%
1	8			= 8.3%

批次间

样品	n	Mean	SD	CV%
1	4			= 7.7%

Cell culture extracts, Tissue Extracts

Sandwich (quantitative)

= 31 µg/ml

31 µg/ml - 1000 µg/ml

Multiple steps standard assay

与反应: Mouse, Rat, Cow, Human

ab115343 is an in vitro enzyme-linked immunosorbent assay to determine the levels of phospho S232 PDHA1 protein in cell and tissue lysates. The assay employs a mouse antibody specific for PDHA1 protein coated on a 96-well plate. Samples are pipetted into the wells and PDHA1 protein present in the sample is bound to the wells by the immobilized antibody. The wells are washed and a rabbit anti-phospho S232 PDHA1 protein detector antibody is added. After washing away unbound detector antibody, HRP-conjugated anti-rabbit antibody is pipetted into the wells. The wells are again washed, an HRP substrate solution (TMB) is added to the wells and color develops in proportion to the amount of phospho S232 PDHA1 protein bound. The developing blue color is measured at 600 nm. Optionally the reaction can be stopped by adding hydrochloric acid which changes the color from blue to yellow and the intensity can be measured at 450 nm.

Store all components at 4°C. The kits are stable for at least 6

months. Unused microplate strips should be returned to the pouch containing the desiccant and resealed.

平台 Microplate

## 性能

存放说明 Store at +4°C. Please refer to protocols.

组件	1 x 96 tests
10X Blocking Buffer	1 x 6ml
10X HRP Label	1 x 1ml
10X phospho S232 PDHA1 protein Detector Antibody	1 x 0.7ml
20X Buffer	1 x 20ml
Extraction Buffer (ab260490)	1 x 15ml
Microplate 96 antibody coated wells in 12 strips	1 unit
HRP Development Solution	1 x 12ml

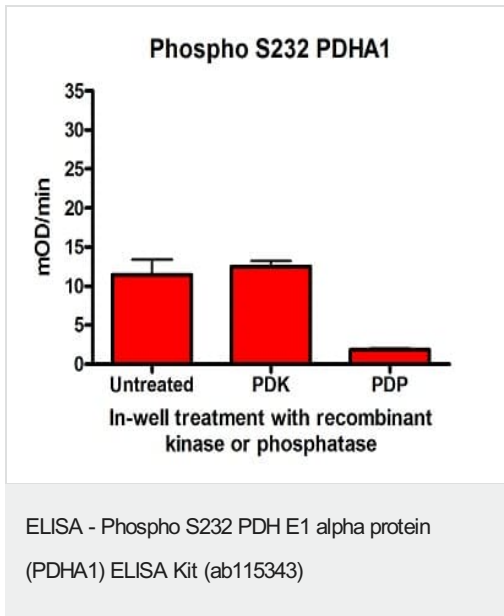
功能 The pyruvate dehydrogenase complex catalyzes the overall conversion of pyruvate to acetyl-CoA and CO<sub>2</sub>. It contains multiple copies of three enzymatic components: pyruvate dehydrogenase (E1), dihydrolipoamide acetyltransferase (E2) and lipoamide dehydrogenase (E3).

组织特异性 Ubiquitous.

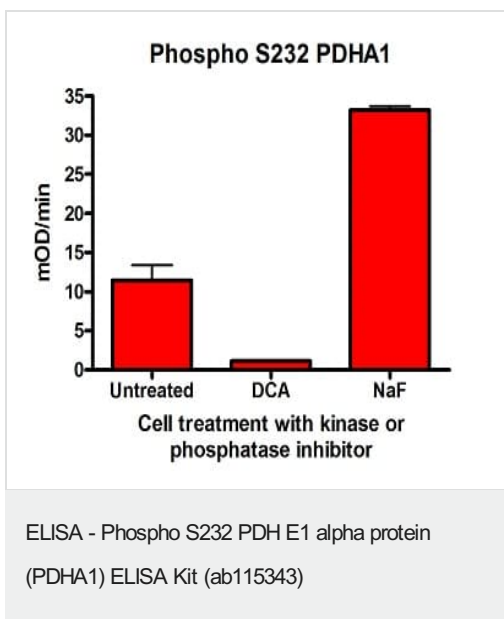
疾病相关 Defects in PDHA1 are a cause of pyruvate decarboxylase E1 component deficiency (PDHE1 deficiency) [MIM:312170]. PDHE1 deficiency is the most common enzyme defect in patients with primary lactic acidosis. It is associated with variable clinical phenotypes ranging from neonatal death to prolonged survival complicated by developmental delay, seizures, ataxia, apnea, and in some cases to an X-linked form of Leigh syndrome (X-LS). Defects in PDHA1 are the cause of X-linked Leigh syndrome (X-LS) [MIM:308930]. X-LS is an early-onset progressive neurodegenerative disorder with a characteristic neuropathology consisting of focal, bilateral lesions in one or more areas of the central nervous system, including the brainstem, thalamus, basal ganglia, cerebellum, and spinal cord. The lesions are areas of demyelination, gliosis, necrosis, spongiosis, or capillary proliferation. Clinical symptoms depend on which areas of the central nervous system are involved. The most common underlying cause is a defect in oxidative phosphorylation. LS may be a feature of a deficiency of any of the mitochondrial respiratory chain complexes.

细胞定位 Mitochondrion matrix.

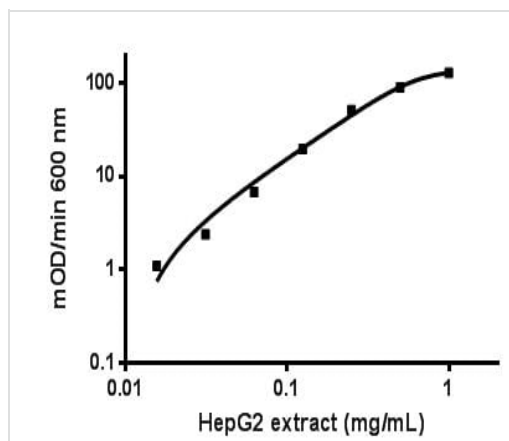
## 图片



The PDHA1 bound from undosed HeLa cells was subject to in-well kinase treatment (PDK1&3) or in-well phosphatase treatment (PDP1) according to the supplementary protocol shown below. Untreated cells showed a significant endogenous phosphorylation signal at S232 which is only slightly increased by kinase treatment. Conversely phosphatase treatment was able to significantly reduce the phospho S232 signal from the endogenous levels.

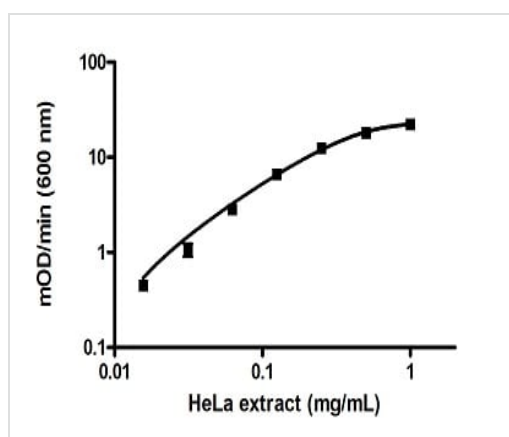


HeLa cells were cultured for 4 hours in media supplemented with DCA (20mM) to specifically inhibit mitochondrial PDH kinases, or NaF (20mM), a general inhibitor of serine/threonine protein phosphatases. The DCA treatment reduced the level of phospho S232. Conversely NaF treatment, to inhibit cellular serine phosphatases, increased the phosphorylation level of S232.



ELISA - Phospho S232 PDH E1 alpha protein  
(PDHA1) ELISA Kit (ab115343)

Example control sample curve for HepG2 cell extract. The phosphorylation state of PDHA1 can vary by treatment but also by cell culture conditions such as media supplements, nutrients and also cell density.



ELISA - Phospho S232 PDH E1 alpha protein  
(PDHA1) ELISA Kit (ab115343)

Example control sample curve for HeLa cell extract. The phosphorylation state of PDHA1 can vary by treatment but also by cell culture conditions such as media supplements, nutrients and also cell density.

**Please note:** All products are "FOR RESEARCH USE ONLY. NOT FOR USE IN DIAGNOSTIC PROCEDURES"

### Our Abpromise to you: Quality guaranteed and expert technical support

- Replacement or refund for products not performing as stated on the datasheet
- Valid for 12 months from date of delivery
- Response to your inquiry within 24 hours
- We provide support in Chinese, English, French, German, Japanese and Spanish
- Extensive multi-media technical resources to help you
- We investigate all quality concerns to ensure our products perform to the highest standards

If the product does not perform as described on this datasheet, we will offer a refund or replacement. For full details of the Abpromise, please visit <https://www.abcam.cn/abpromise> or contact our technical team.

### Terms and conditions

- Guarantee only valid for products bought direct from Abcam or one of our authorized distributors