

Mouse SCF ELISA Kit ab100740

[5 References](#) [3 图像](#)

概述

产品名称	小鼠SCF ELISA试剂盒
检测方法	Colorimetric
样品类型	Cell culture supernatant, Serum, Plasma
检测类型	Sandwich (quantitative)
灵敏度	< 5 pg/ml
范围	2.74 pg/ml - 2000 pg/ml
回收率	96 %

特定样本回收率

样品类型	平均%	范围
Cell culture supernatant	98.64	85% - 106%
Serum	95.86	85% - 105%
Plasma	94.56	84% - 104%

实验步骤 Multiple steps standard assay

种属反应性 与反应: Mouse, Rat

产品概述 Abcam's SCF Mouse ELISA (Enzyme-Linked Immunosorbent Assay) kit is an *in vitro* enzyme-linked immunosorbent assay for the quantitative measurement of mouse SCF in serum, plasma and cell culture supernatants.

This assay employs an antibody specific for mouse SCF coated on a 96-well plate. Standards and samples are pipetted into the wells and SCF present in a sample is bound to the wells by the immobilized antibody. The wells are washed and biotinylated anti-mouse SCF antibody is added. After washing away unbound biotinylated antibody, HRP-conjugated streptavidin is pipetted to the wells. The wells are again washed, a TMB substrate solution is added to the wells and color develops in proportion to the amount of SCF bound. The Stop Solution changes the color from blue to yellow, and the intensity of the color is measured at 450 nm.

平台 Microplate

性能

存放说明

Store at -20°C. Please refer to protocols.

组件	1 x 96 tests
20X Wash Buffer	1 x 25ml
5X Assay Diluent B	1 x 15ml
90X HRP-Streptavidin Concentrate	1 x 200µl
Assay Diluent A	1 x 30ml
Biotinylated anti-Mouse SCF	2 vials
Recombinant Mouse SCF Standard (lyophilized)	2 vials
SCF Microplate (12 x 8 wells)	1 unit
Stop Solution	1 x 8ml
TMB One-Step Substrate Reagent	1 x 12ml

功能

Ligand for the receptor-type protein-tyrosine kinase KIT. Plays an essential role in the regulation of cell survival and proliferation, hematopoiesis, stem cell maintenance, gametogenesis, mast cell development, migration and function, and in melanogenesis. KITLG/SCF binding can activate several signaling pathways. Promotes phosphorylation of PIK3R1, the regulatory subunit of phosphatidylinositol 3-kinase, and subsequent activation of the kinase AKT1. KITLG/SCF and KIT also transmit signals via GRB2 and activation of RAS, RAF1 and the MAP kinases MAPK1/ERK2 and/or MAPK3/ERK1. KITLG/SCF and KIT promote activation of STAT family members STAT1, STAT3 and STAT5. KITLG/SCF and KIT promote activation of PLCG1, leading to the production of the cellular signaling molecules diacylglycerol and inositol 1,4,5-trisphosphate. KITLG/SCF acts synergistically with other cytokines, probably interleukins.

疾病相关

Hyperpigmentation with or without hypopigmentation, familial progressive Deafness, congenital, unilateral or asymmetric

序列相似性

Belongs to the SCF family.

发展阶段

Acts in the early stages of hematopoiesis.

翻译后修饰

A soluble form (sKITLG) is produced by proteolytic processing of isoform 1 in the extracellular domain.

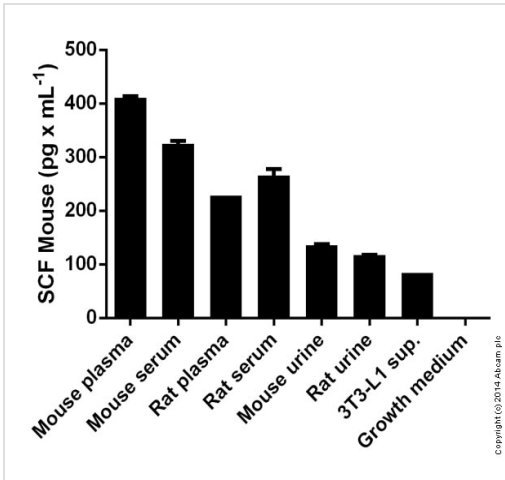
Found in two differentially glycosylated forms, LMW-SCF and HMW-SCF. LMW-SCF is fully N-glycosylated at Asn-145, partially N-glycosylated at Asn-90, O-glycosylated at Ser-167, Thr-168 and Thr-180, and not glycosylated at Asn-97 or Asn-118. HMW-SCF is N-glycosylated at Asn-118, Asn-90 and Asn-145, O-glycosylated at Ser-167, Thr-168 and Thr-180, and not glycosylated at Asn-97.

A soluble form exists as a cleavage product of the extracellular domain.

细胞定位

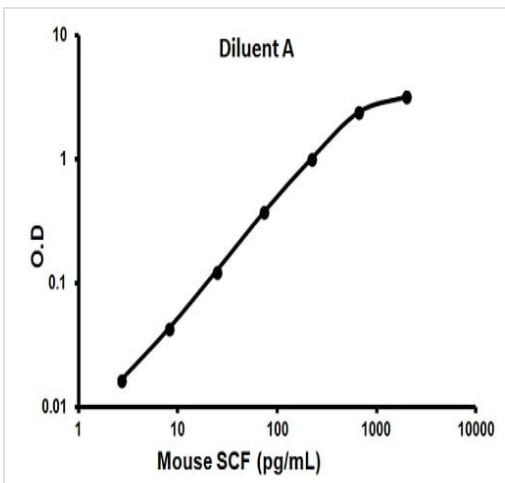
Secreted; Cell membrane and Cytoplasm. Cytoplasm, cytoskeleton. Cell membrane. Cell projection, lamellipodium. Cell projection, filopodium.

图片



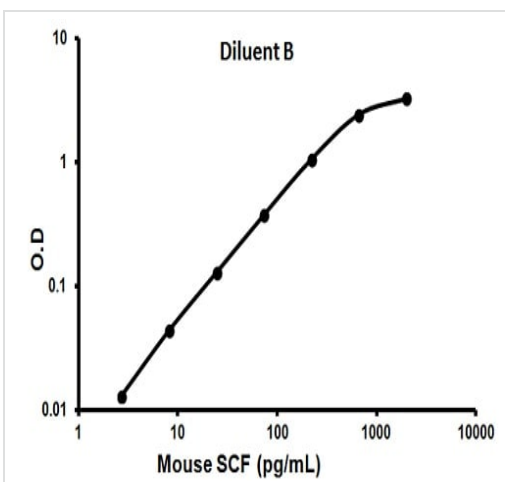
SCF measured in various fluids showing quantity (pg) per mL of tested sample

Sandwich ELISA - ab100740 SCF Mouse ELISA Kit



Representative standard curve using ab100740

Typical standard curve



Representative standard curve using ab100740

Typical standard curve

Please note: All products are "FOR RESEARCH USE ONLY. NOT FOR USE IN DIAGNOSTIC PROCEDURES"

Our Abpromise to you: Quality guaranteed and expert technical support

- Replacement or refund for products not performing as stated on the datasheet
- Valid for 12 months from date of delivery
- Response to your inquiry within 24 hours

- We provide support in Chinese, English, French, German, Japanese and Spanish
- Extensive multi-media technical resources to help you
- We investigate all quality concerns to ensure our products perform to the highest standards

If the product does not perform as described on this datasheet, we will offer a refund or replacement. For full details of the Abpromise, please visit <https://www.abcam.cn/abpromise> or contact our technical team.

Terms and conditions

- Guarantee only valid for products bought direct from Abcam or one of our authorized distributors