

Mouse MIP2 ELISA Kit (CXCL2) ab100727

1 References 2 图像

概述

产品名称	小鼠MIP2 ELISA试剂盒(CXCL2)
检测方法	Colorimetric
样品类型	Cell culture supernatant, Plasma
检测类型	Sandwich (quantitative)
灵敏度	< 8 pg/ml
范围	4.1 pg/ml - 1000 pg/ml
回收率	90 %

特定样本回收率

样品类型	平均%	范围
Cell culture supernatant	94.58	86% - 104%
Plasma	87.94	82% - 98%

实验步骤 Multiple steps standard assay

种属反应性 与反应: Mouse

产品概述 Abcam’s MIP2 Mouse ELISA (Enzyme-Linked Immunosorbent Assay) kit is an *in vitro* enzyme-linked immunosorbent assay for the quantitative measurement of mouse MIP2 in plasma and cell culture supernatants. (Mouse MIP2 concentration is pretty low in normal plasma, it may not be detected in this assay).

This assay employs an antibody specific for mouse MIP2 coated on a 96-well plate. Standards and samples are pipetted into the wells and MIP2 present in a sample is bound to the wells by the immobilized antibody. The wells are washed and biotinylated anti-mouse MIP2 antibody is added. After washing away unbound biotinylated antibody, HRP-conjugated streptavidin is pipetted to the wells. The wells are again washed, a TMB substrate solution is added to the wells and color develops in proportion to the amount of MIP2 bound. The Stop Solution changes the color from blue to yellow, and the intensity of the color is measured at 450 nm.

We have not been able to detect endogenous Mouse MIP2 in normal serum with ab100727, only in serum spiked with Mouse MIP2.

平台 Microplate

性能

存放说明 Store at -20°C. Please refer to protocols.

组件	1 x 96 tests
20X Wash Buffer	1 x 25ml
5X Assay Diluent B	1 x 15ml
700X HRP-Streptavidin Concentrate	1 x 200μl
Assay Diluent A	1 x 30ml
Biotinylated anti-Mouse MIP2	2 vials
MIP2 Microplate (12 x 8 wells)	1 unit
Recombinant Mouse MIP2 Standard (lyophilized)	2 vials
Stop Solution	1 x 8ml
TMB One-Step Substrate Reagent	1 x 12ml

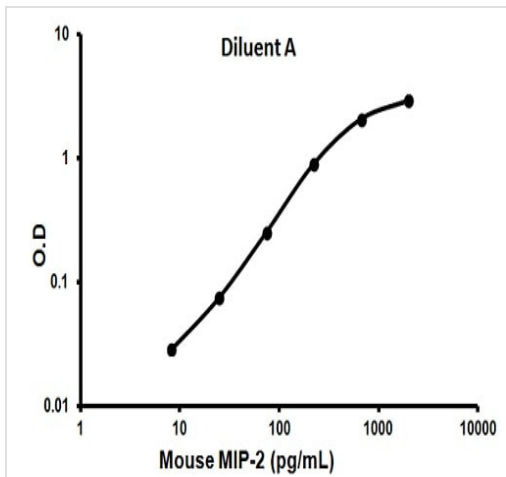
功能 Produced by activated monocytes and neutrophils and expressed at sites of inflammation. Hematopoietic chemokine, which, in vitro, suppresses hematopoietic progenitor cell proliferation. GRO-beta(5-73) shows a highly enhanced hematopoietic activity.

序列相似性 Belongs to the intercrine alpha (chemokine CxC) family.

翻译后修饰 The N-terminal processed form GRO-beta(5-73) is produced by proteolytic cleavage after secretion from bone marrow stromal cells.

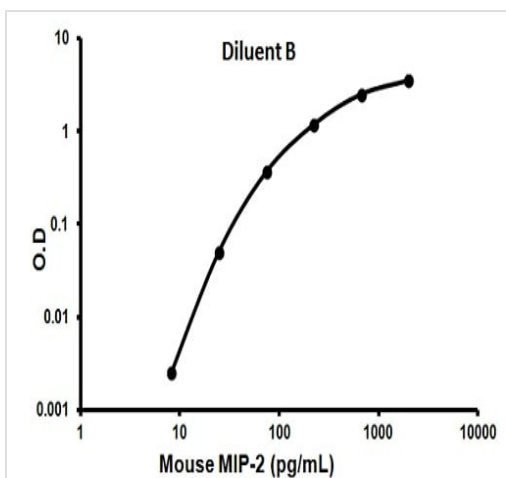
细胞定位 Secreted.

图片



Representative standard curve using ab100727

Typical standard curve



Representative standard curve using ab100727

Typical standard curve

**Please note:** All products are "FOR RESEARCH USE ONLY. NOT FOR USE IN DIAGNOSTIC PROCEDURES"

### Our Abpromise to you: Quality guaranteed and expert technical support

- Replacement or refund for products not performing as stated on the datasheet
- Valid for 12 months from date of delivery
- Response to your inquiry within 24 hours
- We provide support in Chinese, English, French, German, Japanese and Spanish
- Extensive multi-media technical resources to help you
- We investigate all quality concerns to ensure our products perform to the highest standards

If the product does not perform as described on this datasheet, we will offer a refund or replacement. For full details of the Abpromise, please visit <https://www.abcam.cn/abpromise> or contact our technical team.

### Terms and conditions

- Guarantee only valid for products bought direct from Abcam or one of our authorized distributors