

Mouse MBL ELISA Kit ab208343

重组 SimpleStep ELISA

9 图像

概述

产品名称 小鼠MBL ELISA试剂盒

检测方法 Colorimetric

批次内				
样品	n	Mean	SD	CV%
Mouse serum	5			7.3%

批次间				
样品	n	Mean	SD	CV%
Mouse serum	4			14%

样品类型 Cell culture supernatant, Serum, Plasma, Cell culture extracts, Tissue Extracts

检测类型 Sandwich (quantitative)

灵敏度 8.5 pg/ml

范围 39.063 pg/ml - 2500 pg/ml

特定样本回收率		
样品类型	平均%	范围
Serum	79.5	75% - 86.8%
Cell culture media	99.7	95.4% - 103.3%
Hep Plasma	96.6	88.8% - 101.2%
EDTA Plasma	94.9	74.1% - 102.3%
Cit plasma	102.7	90.8% - 117.3%

检测时间 1h 30m

实验步骤 One step assay

种属反应性

与反应: Mouse
不与反应: Goat, Cow, Pig

产品概述

Mouse MBL ELISA Kit (ab208343) is a single-wash 90 min sandwich ELISA designed for the quantitative measurement of MBL protein in cell culture supernatant, serum, plasma, tissue extracts, and cell culture extracts. It uses our proprietary SimpleStep ELISA® technology. Quantitate Mouse MBL with 8.5 pg/ml sensitivity.

SimpleStep ELISA® technology employs capture antibodies conjugated to an affinity tag that is recognized by the monoclonal antibody used to coat our SimpleStep ELISA® plates. This approach to sandwich ELISA allows the formation of the antibody-analyte sandwich complex in a single step, significantly reducing assay time. See the SimpleStep ELISA® protocol summary in the image section for further details. Our SimpleStep ELISA® technology provides several benefits:

- Single-wash protocol reduces assay time to 90 minutes or less
- High sensitivity, specificity and reproducibility from superior antibodies
- Fully validated in biological samples
- 96-wells plate breakable into 12 x 8 wells strips

A 384-well SimpleStep ELISA® microplate (**ab203359**) is available to use as an alternative to the 96-well microplate provided with SimpleStep ELISA® kits.

说明

MBL is a secreted calcium-dependent lectin involved in innate immune defense. MBL binds mannose, fucose and N-acetylglucosamine on different microorganisms and activates the lectin complement pathway. MBL binds to late apoptotic cells, as well as to apoptotic blebs and to necrotic cells, but not to early apoptotic cells, facilitating their uptake by macrophages.

Abcam has not and does not intend to apply for the REACH Authorisation of customers' uses of products that contain European Authorisation list (Annex XIV) substances. It is the responsibility of our customers to check the necessity of application of REACH Authorisation, and any other relevant authorisations, for their intended uses.

平台

Pre-coated microplate (12 x 8 well strips)

性能

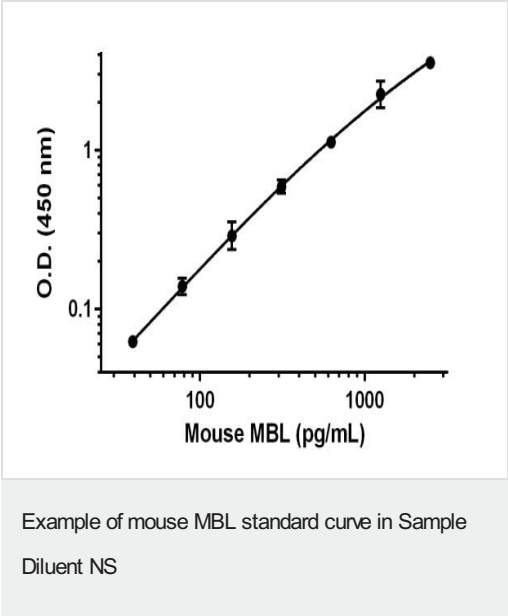
存放说明Store at +4°C. Please refer to protocols.

组件	1 x 96 tests
10X Mouse MBL Capture Antibody	1 x 600µl
10X Mouse MBL Detector Antibody	1 x 600µl
10X Wash Buffer PT (ab206977)	1 x 20ml
50X Cell Extraction Enhancer Solution (ab193971)	1 x 1ml
5X Cell Extraction Buffer PTR (ab193970)	1 x 10ml
Antibody Diluent 5BR	1 x 6ml

组件	1 x 96 tests
Mouse MBL Lyophilized Recombinant Protein	2 vials
Plate Seals	1 unit
Sample Diluent NS (ab193972)	1 x 50ml
SimpleStep Pre-Coated 96-Well Microplate (ab206978)	1 unit
Stop Solution	1 x 12ml
TMB Development Solution	1 x 12ml

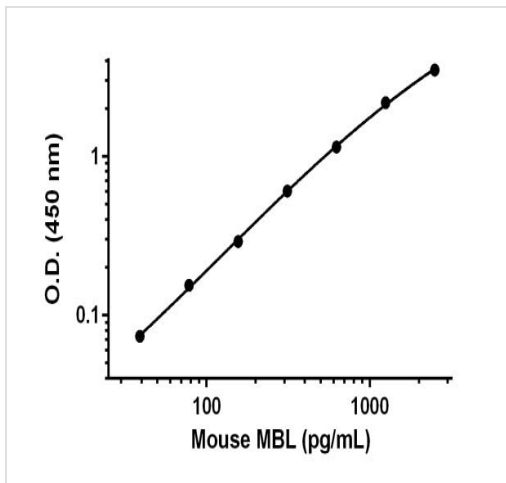
功能	Calcium-dependent lectin involved in innate immune defense. Binds mannose, fucose and N-acetylglucosamine on different microorganisms and activates the lectin complement pathway. Binds to late apoptotic cells, as well as to apoptotic blebs and to necrotic cells, but not to early apoptotic cells, facilitating their uptake by macrophages. May bind DNA.
组织特异性	Plasma protein produced mainly in the liver.
疾病相关	Note=There is an association between low levels of MBL2 and a defect of opsonization which results in susceptibility to frequent and chronic infections.
序列相似性	Contains 1 C-type lectin domain. Contains 1 collagen-like domain.
细胞定位	Secreted.

图片



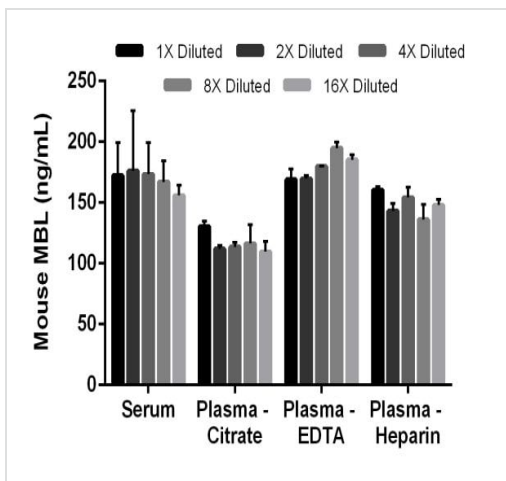
Example of mouse MBL standard curve in Sample Diluent NS

Background-subtracted data values (mean +/- SD) are graphed.



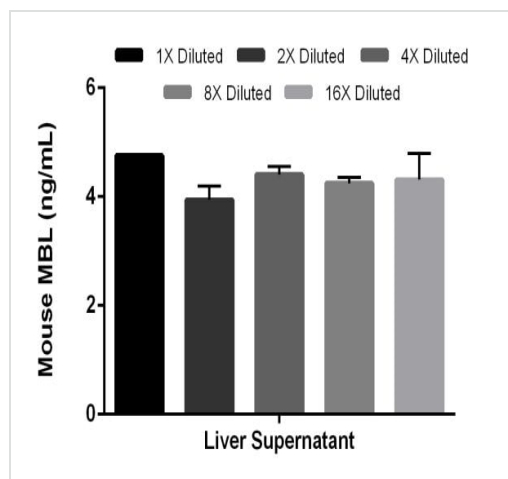
Background-subtracted data values (mean \pm SD) are graphed.

Example of mouse MBL standard curve in 1X Cell Extraction Buffer PTR



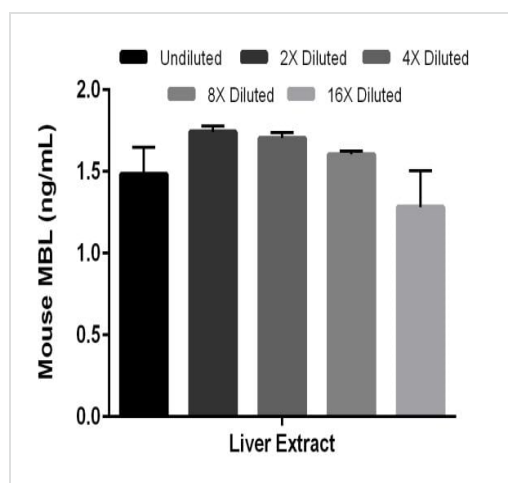
The concentrations of MBL were measured in duplicates, interpolated from the MBL standard curves and corrected for sample dilution. 1X diluted samples are pre-diluted as follows: serum 1:83, plasma (citrate) 1:83, plasma (EDTA) 1:167, plasma (heparin) 1:167. The interpolated dilution factor corrected values are plotted (mean \pm SD, n=2). The mean MBL concentration was determined to be 169.0 ng/mL in serum, 116.5 ng/mL in plasma (citrate), 179.8 ng/mL in plasma (EDTA) and 148.4 ng/mL in plasma (heparin).

Interpolated concentrations of native MBL in mouse serum and plasma samples



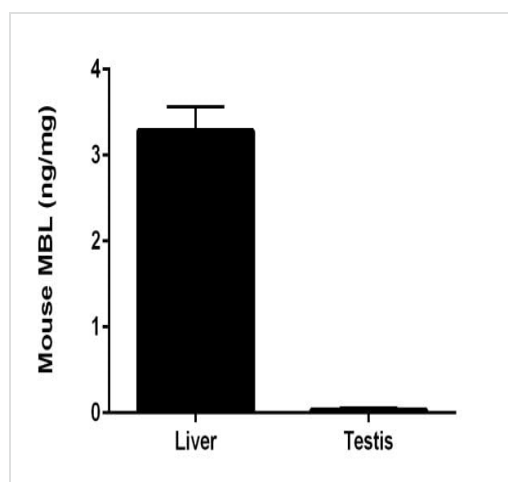
Interpolated concentrations of native MBL in mouse liver supernatant samples

Mouse liver cells were cultured for 5 days in a medium and supernatant sample was prepared. The concentrations of MBL were measured in duplicates, interpolated from the MBL standard curves and corrected for sample dilution. 1X diluted samples are pre-diluted as follows: liver supernatant 50%. The interpolated dilution factor corrected values are plotted (mean \pm SD, $n=2$). The mean MBL concentration was determined to be 4.3 ng/mL in liver supernatant.



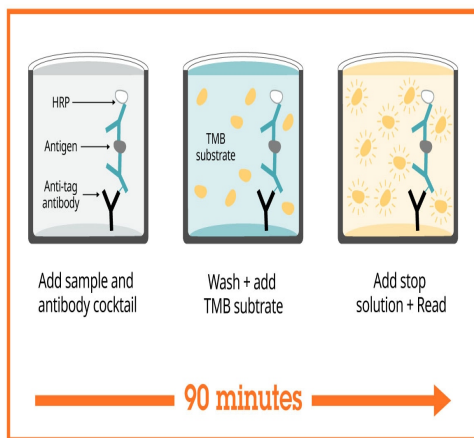
Interpolated concentrations of native MBL in mouse liver extract samples based on a 500 μ g/mL extract load

The concentrations of MBL were measured in duplicate and interpolated from the MBL standard curve and corrected for sample dilution. The interpolated dilution factor corrected values are plotted (mean \pm SD, $n=2$). The mean MBL concentration was determined to be 1.56 ng/mL in liver extract sample.



Interpolated concentrations of native MBL in mouse liver and testis extract samples

The concentrations of MBL were measured in three different dilutions in duplicate and interpolated from the MBL standard curve and corrected for sample dilution. The interpolated dilution factor corrected values are plotted in ng of MBL per mg of extract (mean \pm SD, $n=3$).



Sandwich ELISA - Mouse MBL ELISA Kit
(ab208343)

SimpleStep ELISA technology allows the formation of the antibody-antigen complex in one single step, reducing assay time to 90 minutes. Add samples or standards and antibody mix to wells all at once, incubate, wash, and add your final substrate. See protocol for a detailed step-by-step guide.

Powered by
recombinant antibodies



Research with confidence
Consistent and reproducible results



Long-term and scalable supply
Recombinant technology



Success from the first experiment
Confirmed specificity



Ethical standards compliant
Animal-free production

To learn more about the advantages of recombinant antibodies see [here](#).

Sandwich ELISA - Mouse MBL ELISA Kit
(ab208343)

**Get more done with
SimpleStep ELISA**



Easy to use
Single-wash 90-minute
protocol



Flexible
Matched antibody pairs
available



Precision antibodies
High sensitivity, specificity
and reproducibility



Scalable
Now in 10-pack and
384-well formats

Sandwich ELISA - Mouse MBL ELISA Kit
(ab208343)

To learn more about the advantages of SimpleStep ELISA® kits
see [here](#).

Please note: All products are "FOR RESEARCH USE ONLY. NOT FOR USE IN DIAGNOSTIC PROCEDURES"

Our Abpromise to you: Quality guaranteed and expert technical support

- Replacement or refund for products not performing as stated on the datasheet
- Valid for 12 months from date of delivery
- Response to your inquiry within 24 hours
- We provide support in Chinese, English, French, German, Japanese and Spanish
- Extensive multi-media technical resources to help you
- We investigate all quality concerns to ensure our products perform to the highest standards

If the product does not perform as described on this datasheet, we will offer a refund or replacement. For full details of the Abpromise, please visit <https://www.abcam.cn/abpromise> or contact our technical team.

Terms and conditions

- Guarantee only valid for products bought direct from Abcam or one of our authorized distributors