

Mouse IL-6 ELISA Kit ab100712

124 References 6 图像

概述


产品名称	小鼠IL-6 ELISA试剂盒
检测方法	Colorimetric
样品类型	Cell culture supernatant, Serum, Plasma
检测类型	Sandwich (quantitative)
灵敏度	< 2 pg/ml
范围	0.82 pg/ml - 600 pg/ml
回收率	94 %

特定样本回收率

样品类型	平均%	范围
Cell culture supernatant	96.18	86% - 103%
Serum	93.39	83% - 103%
Plasma	94.53	84% - 104%

实验步骤 Multiple steps standard assay

种属反应性 与反应: Mouse

预测可用于: Human 

产品概述 Mouse IL-6 ELISA kit is designed for the quantitative measurement of Mouse IL-6 in serum, plasma and cell culture supernatants.

This assay employs an antibody specific for Mouse IL-6 coated on a 96-well plate. Standards and samples are pipetted into the wells and IL-6 present in a sample is bound to the wells by the immobilized antibody. The wells are washed and biotinylated anti-Mouse IL-6 antibody is added. After washing away unbound biotinylated antibody, HRP-conjugated streptavidin is pipetted to the wells. The wells are again washed, a TMB substrate solution is added to the wells and color develops in proportion to the amount of IL-6 bound. The Stop Solution changes the color from blue to yellow, and the intensity of the color is measured at 450 nm.

平台 Microplate

性能

存放说明 Store at -20°C. Please refer to protocols.

组件	1 x 96 tests
200X HRP-Streptavidin Concentrate	1 x 200µl
20X Wash Buffer	1 x 25ml
5X Assay Diluent	1 x 15ml
Biotinylated anti-Mouse IL-6	2 vials
IL-6 Microplate (12 x 8 wells)	1 unit
Recombinant mouse IL-6 Standard (lyophilized)	2 vials
Stop Solution	1 x 8ml
TMB One-Step Substrate Reagent	1 x 12ml

**功能** Cytokine with a wide variety of biological functions. It is a potent inducer of the acute phase response. Plays an essential role in the final differentiation of B-cells into Ig-secreting cells. Involved in lymphocyte and monocyte differentiation. It induces myeloma and plasmacytoma growth and induces nerve cells differentiation. Acts on B-cells, T-cells, hepatocytes, hematopoietic progenitor cells and cells of the CNS. Also acts as a myokine. It is discharged into the bloodstream after muscle contraction and acts to increase the breakdown of fats and to improve insulin resistance.

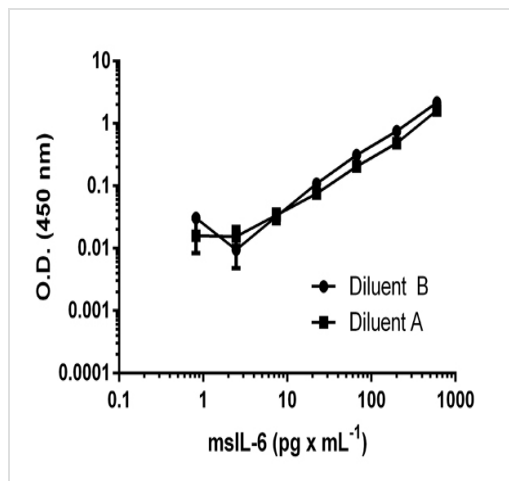
**疾病相关** Genetic variations in IL6 are associated with susceptibility to rheumatoid arthritis systemic juvenile (RASJ) [MIM:604302]. An inflammatory articular disorder with systemic-onset beginning before the age of 16. It represents a subgroup of juvenile arthritis associated with severe extraarticular features and occasionally fatal complications. During active phases of the disorder, patients display a typical daily spiking fever, an evanescent macular rash, lymphadenopathy, hepatosplenomegaly, serositis, myalgia and arthritis.  
Note=A IL6 promoter polymorphism is associated with a lifetime risk of development of Kaposi sarcoma in HIV-infected men.

**序列相似性** Belongs to the IL-6 superfamily.

**翻译后修饰** N- and O-glycosylated.

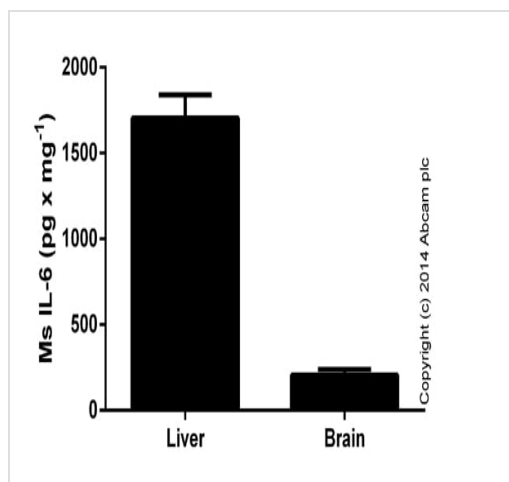
**细胞定位** Secreted.

图片



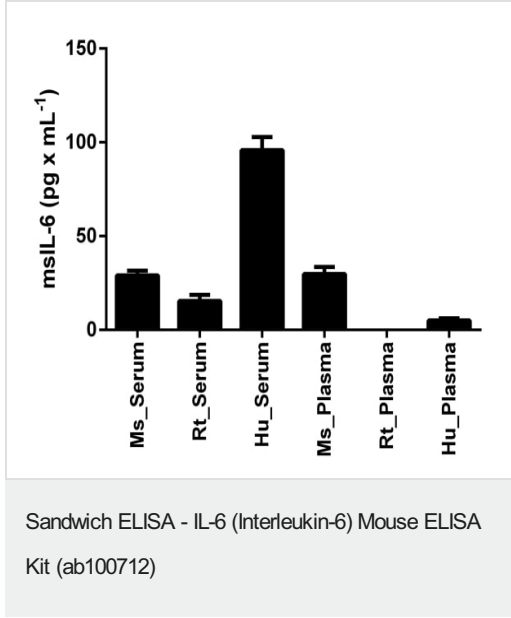
Standard curve of msIL-6 in different diluents with background signal subtracted (duplicates; +/- SD).

Sandwich ELISA - IL-6 (Interleukin-6) Mouse ELISA Kit (ab100712)

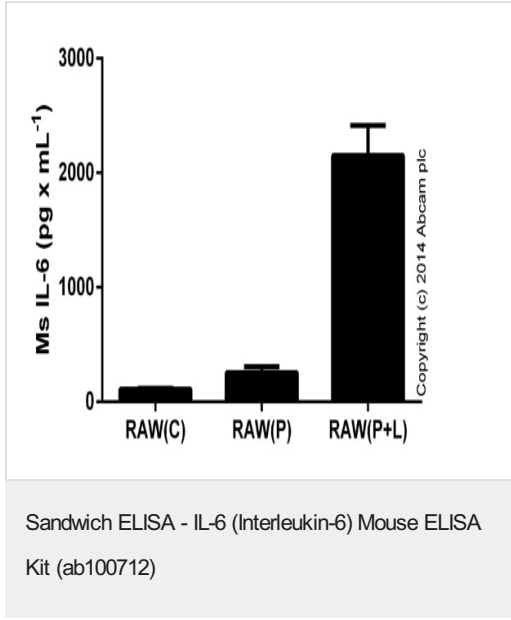


IL-6 measured in mouse tissue lysates (diluted in the range of 1:20 to 1:200; expressed as per mg of extracted protein), with background signal subtracted (duplicates; +/- SD).

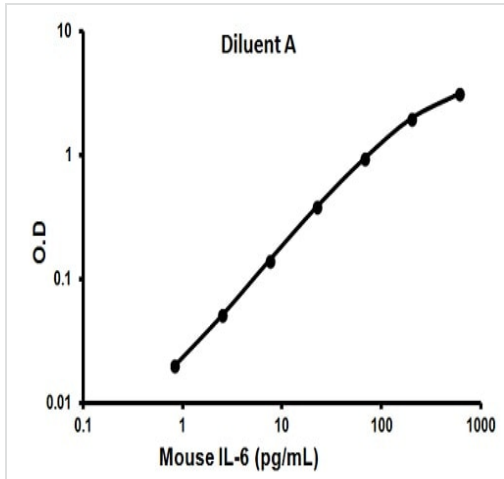
Sandwich ELISA - IL-6 (Interleukin-6) Mouse ELISA Kit (ab100712)



mIL-6 measured in biological fluids, background signal subtracted (duplicates +/- SD).

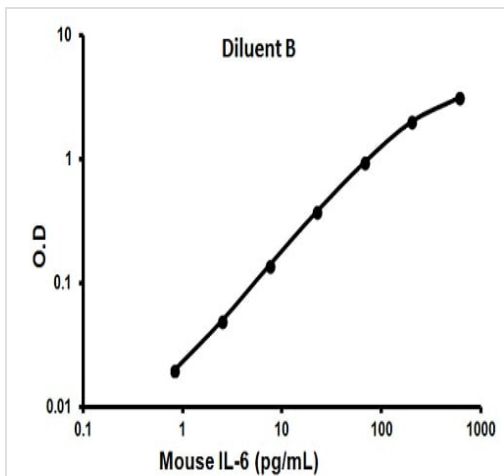


IL-6 detected in supernatants from RAW 246.7 control cells (C) or cells stimulated for 24 hours with 50 ng x mL<sup>-1</sup> of PMA ([ab120297](#)) (P), or 24 hours with PMA and 1 ug x mL<sup>-1</sup> of LPS (Sigma) (P+L) for the last 6 hours. Results shown after background signal was subtracted (duplicates +/- SD).



Representative standard curve using ab100712

Typical standard curve



Representative standard curve using ab100712

Typical standard curve

**Please note:** All products are "FOR RESEARCH USE ONLY. NOT FOR USE IN DIAGNOSTIC PROCEDURES"

### Our Abpromise to you: Quality guaranteed and expert technical support

- Replacement or refund for products not performing as stated on the datasheet
- Valid for 12 months from date of delivery
- Response to your inquiry within 24 hours
- We provide support in Chinese, English, French, German, Japanese and Spanish
- Extensive multi-media technical resources to help you

- We investigate all quality concerns to ensure our products perform to the highest standards

If the product does not perform as described on this datasheet, we will offer a refund or replacement. For full details of the Abpromise, please visit <https://www.abcam.cn/abpromise> or contact our technical team.

### **Terms and conditions**

---

- Guarantee only valid for products bought direct from Abcam or one of our authorized distributors