

Mouse IGFBP5 ELISA Kit ab208345

重组 SimpleStep ELISA

1 References 5 图像

概述

产品名称 小鼠IGFBP5 ELISA试剂盒

检测方法 Colorimetric

批次内				
样品	n	Mean	SD	CV%
Mouse serum	5			3.6%

批次间				
样品	n	Mean	SD	CV%
Mouse serum	3			2.4%

样品类型 Cell culture supernatant, Serum, Plasma

检测类型 Sandwich (quantitative)

灵敏度 73 pg/ml

范围 125 pg/ml - 8000 pg/ml

特定样本回收率		
样品类型	平均%	范围
Cell culture supernatant	104	102% - 106%
Serum	88	83% - 96%
Hep Plasma	93	80% - 104%
Cit plasma	98	92% - 102%

检测时间 1h 30m

实验步骤 One step assay

种属反应性 与反应: Mouse

不与反应: Goat, Cow, Pig

产品概述

Mouse IGFBP5 ELISA Kit (ab208345) is a single-wash 90 min sandwich ELISA designed for the quantitative measurement of IGFBP5 protein in cell culture supernatant, serum, and plasma. It uses our proprietary SimpleStep ELISA® technology. Quantitate Mouse IGFBP5 with 73 pg/ml sensitivity.

SimpleStep ELISA® technology employs capture antibodies conjugated to an affinity tag that is recognized by the monoclonal antibody used to coat our SimpleStep ELISA® plates. This approach to sandwich ELISA allows the formation of the antibody-analyte sandwich complex in a single step, significantly reducing assay time. See the SimpleStep ELISA® protocol summary in the image section for further details. Our SimpleStep ELISA® technology provides several benefits:

- Single-wash protocol reduces assay time to 90 minutes or less
- High sensitivity, specificity and reproducibility from superior antibodies
- Fully validated in biological samples
- 96-wells plate breakable into 12 x 8 wells strips

A 384-well SimpleStep ELISA® microplate (**ab203359**) is available to use as an alternative to the 96-well microplate provided with SimpleStep ELISA® kits.

说明

Insulin-like growth factor-binding protein 5 (IGFBP5) is an IGF binding protein involved in prolonging its half-life, and has both inhibitory and stimulatory effects on IGFs. IGFBP5 can also alter the interaction of IGFs with their receptors.

平台

Pre-coated microplate (12 x 8 well strips)

性能

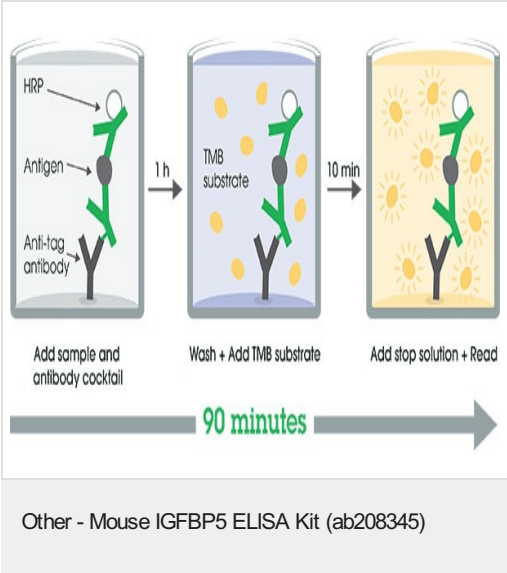
存放说明

Store at +4°C. Please refer to protocols.

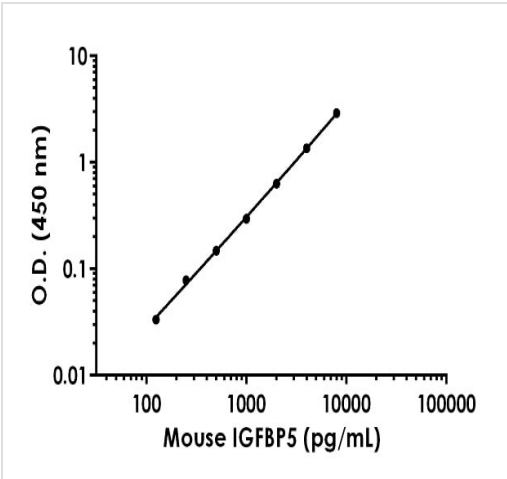
组件	1 x 96 tests
10X Mouse IGFBP5 Capture Antibody	1 x 600µl
10X Mouse IGFBP5 Detector Antibody	1 x 600µl
10X Wash Buffer PT (ab206977)	1 x 20ml
Antibody Diluent CPR2	1 x 6ml
Mouse IGFBP5 Lyophilized Recombinant Protein	2 vials
Plate Seals	1 unit
Sample Diluent NS (ab193972)	1 x 50ml
SimpleStep Pre-Coated 96-Well Microplate (ab206978)	1 unit
Stop Solution	1 x 12ml

组件	1 x 96 tests
TMB Development Solution	1 x 12ml
功能	IGF-binding proteins prolong the half-life of the IGFs and have been shown to either inhibit or stimulate the growth promoting effects of the IGFs on cell culture. They alter the interaction of IGFs with their cell surface receptors.
组织特异性	Osteosarcoma, and at lower levels in liver, kidney and brain.
序列相似性	Contains 1 IGFBP N-terminal domain. Contains 1 thyroglobulin type-1 domain.
细胞定位	Secreted.

图片

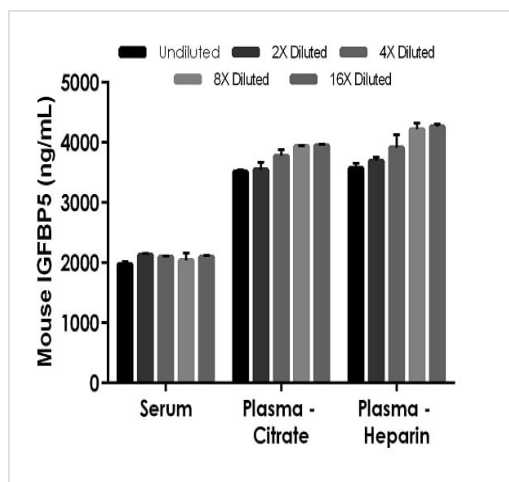


SimpleStep ELISA technology allows the formation of the antibody-antigen complex in one single step, reducing assay time to 90 minutes. Add samples or standards and antibody mix to wells all at once, incubate, wash, and add your final substrate. See protocol for a detailed step-by-step guide.



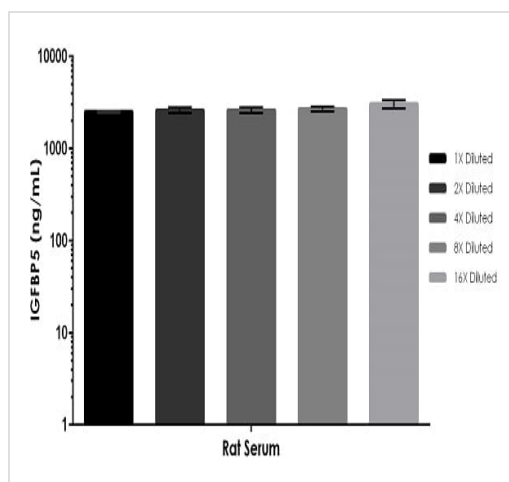
Example of mouse IGFBP5 standard curve

Background-subtracted data values (mean +/- SD) are graphed.



Interpolated concentrations of native IGFBP5 in mouse serum and plasma samples

The concentrations of IGFBP5 were measured in duplicates, interpolated from the IGFBP5 standard curves and corrected for sample dilution. Undiluted samples are as follows: serum 1:600, plasma 1:800, and plasma (heparin) 1:800. The interpolated dilution factor corrected values are plotted (mean \pm SD, $n=2$). The mean IGFBP5 concentration was determined to be 2,058 ng/mL in serum, 3,670 ng/mL in plasma (citrate), and 3,865 ng/mL in plasma (heparin).



This assay detects rat IGFBP5

The concentrations of IGFBP5 in rat serum were measured in duplicates, interpolated from the mouse IGFBP5 standard curves and corrected for sample dilution. Undiluted samples are rat serum 1:250. The interpolated dilution factor corrected values are plotted (mean \pm SD, $n=2$). The mean IGFBP5 concentration was determined to be 2691 ng/mL in rat serum.

Powered by
recombinant antibodies



Research with confidence
Consistent and reproducible results



Long-term and scalable supply
Recombinant technology



Success from the first experiment
Confirmed specificity



Ethical standards compliant
Animal-free production

Sandwich ELISA - Mouse IGFBP5 ELISA Kit
(ab208345)

To learn more about the advantages of recombinant antibodies see [here](#).

Please note: All products are "FOR RESEARCH USE ONLY. NOT FOR USE IN DIAGNOSTIC PROCEDURES"

Our Abpromise to you: Quality guaranteed and expert technical support

- Replacement or refund for products not performing as stated on the datasheet
- Valid for 12 months from date of delivery
- Response to your inquiry within 24 hours
- We provide support in Chinese, English, French, German, Japanese and Spanish
- Extensive multi-media technical resources to help you
- We investigate all quality concerns to ensure our products perform to the highest standards

If the product does not perform as described on this datasheet, we will offer a refund or replacement. For full details of the Abpromise, please visit <https://www.abcam.cn/abpromise> or contact our technical team.

Terms and conditions

- Guarantee only valid for products bought direct from Abcam or one of our authorized distributors