

Mouse IGFBP2 ELISA Kit ab207615

重组 SimpleStep ELISA

5 References 5 图像

概述

产品名称 小鼠IGFBP2 ELISA试剂盒

检测方法 Colorimetric

批次内				
样品	n	Mean	SD	CV%
Serum	5			4.3%

批次间				
样品	n	Mean	SD	CV%
Serum	3			4.9%

样品类型 Cell culture supernatant, Serum, Hep Plasma, EDTA Plasma, Cit plasma

检测类型 Sandwich (quantitative)

灵敏度 103.6 pg/ml

范围 179.68 pg/ml - 11500 pg/ml

特定样本回收率		
样品类型	平均%	范围
Serum	97	92% - 102%
Tissue Culture Media	95	94% - 96%
Hep Plasma	81	77% - 84%
EDTA Plasma	104	96% - 111%
Cit plasma	101	95% - 107%

检测时间 1h 30m

实验步骤 One step assay

**种属反应性****与反应:** Mouse**不与反应:** Cow, Pig**产品概述**

Mouse IGFBP2 ELISA Kit (ab207615) is a single-wash 90 min sandwich ELISA designed for the quantitative measurement of IGFBP2 protein in cell culture supernatant, cit plasma, edta plasma, hep plasma, and serum. It uses our proprietary SimpleStep ELISA® technology. Quantitate Mouse IGFBP2 with 103.6 pg/ml sensitivity.

SimpleStep ELISA® technology employs capture antibodies conjugated to an affinity tag that is recognized by the monoclonal antibody used to coat our SimpleStep ELISA® plates. This approach to sandwich ELISA allows the formation of the antibody-analyte sandwich complex in a single step, significantly reducing assay time. See the SimpleStep ELISA® protocol summary in the image section for further details. Our SimpleStep ELISA® technology provides several benefits:

- Single-wash protocol reduces assay time to 90 minutes or less
- High sensitivity, specificity and reproducibility from superior antibodies
- Fully validated in biological samples
- 96-wells plate breakable into 12 x 8 wells strips

A 384-well SimpleStep ELISA® microplate (**ab203359**) is available to use as an alternative to the 96-well microplate provided with SimpleStep ELISA® kits.

**说明**

Insulin-like growth factor-binding protein 2 (IGFBP2) is an IGF binding protein involved in prolonging its half-life, and has both inhibitory and stimulatory effects on IGFs. IGFBP2 can also alter the interaction of IGFs with their receptors.

**平台**

Microplate (12 x 8 well strips)

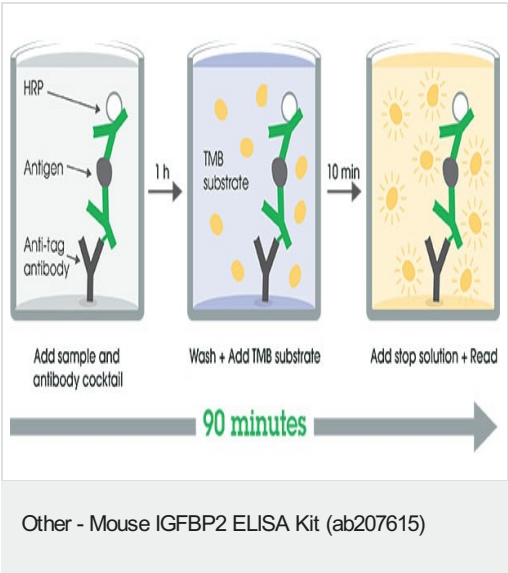
**性能****存放说明**

Store at +4°C. Please refer to protocols.

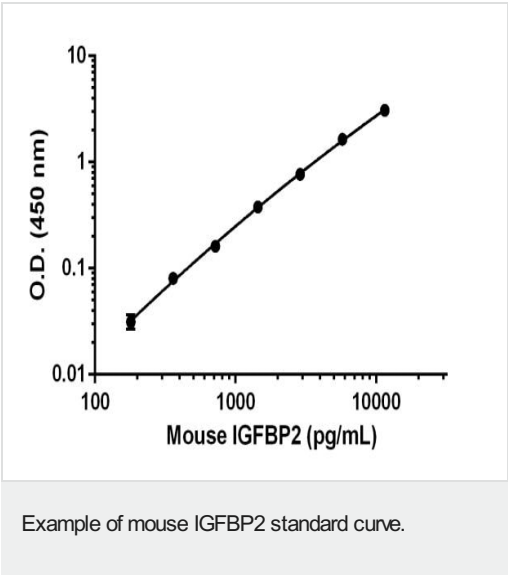
组件	1 x 96 tests
10X Mouse IGFBP2 Capture Antibody	1 x 600µl
10X Mouse IGFBP2 Detector Antibody	1 x 600µl
10X Wash Buffer PT (ab206977)	1 x 20ml
Antibody Diluent 4BR	1 x 6ml
Mouse IGFBP2 Lyophilized Recombinant Protein	2 vials
Plate Seals	1 unit
Sample Diluent NS (ab193972)	1 x 50ml
SimpleStep Pre-Coated 96-Well Microplate (ab206978)	1 unit
Stop Solution	1 x 12ml

组件	1 x 96 tests
TMB Development Solution	1 x 12ml
功能	Inhibits IGF-mediated growth and developmental rates. IGF-binding proteins prolong the half-life of the IGFs and have been shown to either inhibit or stimulate the growth promoting effects of the IGFs on cell culture. They alter the interaction of IGFs with their cell surface receptors.
序列相似性	Contains 1 IGFBP N-terminal domain. Contains 1 thyroglobulin type-1 domain.
结构域	The C-terminus is required for IGF-binding and growth inhibition.
翻译后修饰	O-glycosylated.
细胞定位	Secreted.

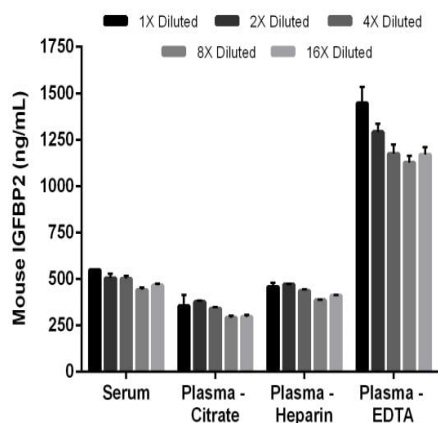
图片



SimpleStep ELISA technology allows the formation of the antibody-antigen complex in one single step, reducing assay time to 90 minutes. Add samples or standards and antibody mix to wells all at once, incubate, wash, and add your final substrate. See protocol for a detailed step-by-step guide.

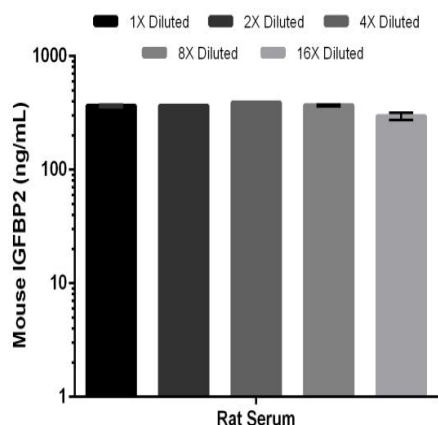


Background-subtracted data values (mean +/- SD) are graphed.



Interpolated concentrations of native IGFBP2 in mouse serum and plasma samples.

The concentrations of IGFBP2 were measured in duplicates, interpolated from the IGFBP2 standard curves and corrected for sample dilution. Undiluted samples are as follows: serum 1.25%, plasma (citrate) 1%, plasma (heparin) 1% and plasma (EDTA) 1:160. The interpolated dilution factor corrected values are plotted (mean  $\pm$  SD, n=2). The mean IGFBP2 concentration was determined to be 492.8 ng/mL in serum, 325.6 ng/mL in plasma (citrate), 428.3 ng/mL in plasma (heparin) and 1247.2 ng/mL in plasma (EDTA).



Rat IGFBP2 is detectable using this assay.

The concentrations of IGFBP2 in rat serum were measured in duplicates, interpolated from the mouse IGFBP2 standard curves and corrected for sample dilution. Undiluted samples are serum 1.25%. The interpolated dilution factor corrected values are plotted (mean  $\pm$  SD, n=2). The mean IGFBP2 concentration was determined to be 357.6 ng/mL in rat serum.

Powered by  
recombinant antibodies



**Research with confidence**  
Consistent and reproducible results



**Long-term and scalable supply**  
Recombinant technology



**Success from the first experiment**  
Confirmed specificity



**Ethical standards compliant**  
Animal-free production

To learn more about the advantages of recombinant antibodies see [here](#).

Sandwich ELISA - Mouse IGFBP2 ELISA Kit  
(ab207615)

**Please note:** All products are "FOR RESEARCH USE ONLY. NOT FOR USE IN DIAGNOSTIC PROCEDURES"

### **Our Abpromise to you: Quality guaranteed and expert technical support**

---

- Replacement or refund for products not performing as stated on the datasheet
- Valid for 12 months from date of delivery
- Response to your inquiry within 24 hours
  
- We provide support in Chinese, English, French, German, Japanese and Spanish
- Extensive multi-media technical resources to help you
- We investigate all quality concerns to ensure our products perform to the highest standards

If the product does not perform as described on this datasheet, we will offer a refund or replacement. For full details of the Abpromise, please visit <https://www.abcam.cn/abpromise> or contact our technical team.

### **Terms and conditions**

---

- Guarantee only valid for products bought direct from Abcam or one of our authorized distributors