

Mouse IgE ELISA Kit ab157718

★★★★★ [2 Abreviews](#) [22 References](#) [3 图像](#)

概述

产品名称

检测方法

精确度

小鼠IgE ELISA试剂盒

Colorimetric

批次内

样品	n	Mean	SD	CV%
Overall				< 10%

批次间

样品	n	Mean	SD	CV%
Overall				< 10%

样品类型

检测类型

灵敏度

范围

回收率

Serum, Plasma, Other biological fluids

Sandwich (quantitative)

1.83 ng/ml

6.25 ng/ml - 400 ng/ml

特定样本回收率

样品类型	平均%	范围
Serum	> 85	% - %

实验步骤

种属反应性

产品概述

Multiple steps standard assay

与反应: Mouse

Abcam's IgE Mouse ELISA kit is an *in vitro* enzyme-linked immunosorbent assay (ELISA) for the

is a measure of the concentration of IgE in the test sample. The quantity of IgE in the test sample can be interpolated from the standard curve constructed from the standards, and corrected for sample dilution.

平台 Microplate

## 性能

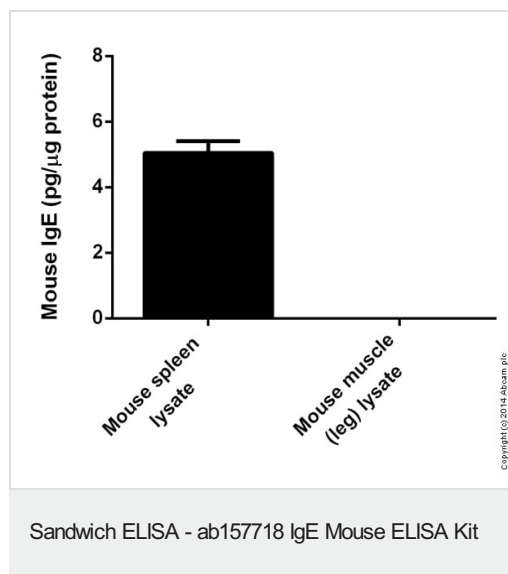
存放说明 Store at +4°C. Please refer to protocols.

组件	1 x 96 tests
100X HRP-conjugated anti-mouse IgE antibody	1 x 150µl
20X Wash Buffer Concentrate	1 x 50ml
5X Diluent Concentrate	1 x 50ml
Chromogen Substrate Solution	1 x 12ml
Mouse IgE Calibrator (Lyophilized)	1 vial
Mouse IgE ELISA Microplate	1 unit
Stop Solution	1 x 12ml

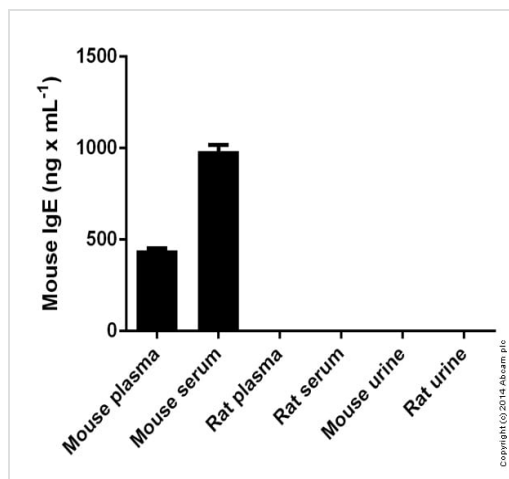
相关性 IgE is the class of antibodies produced in the lungs, skin, and mucous membranes. It may protect against parasite invasion, but it is a major factor in allergic reactions. The antigen-specific IgE interacts with mast cells and eosinophils, triggers the release of histamine, leukotrienes and other substances that lead to the itching, sneezing and congestion of allergies - and the life threatening respiratory distress of asthma and anaphylactic shock.

细胞定位 Secreted

## 图片

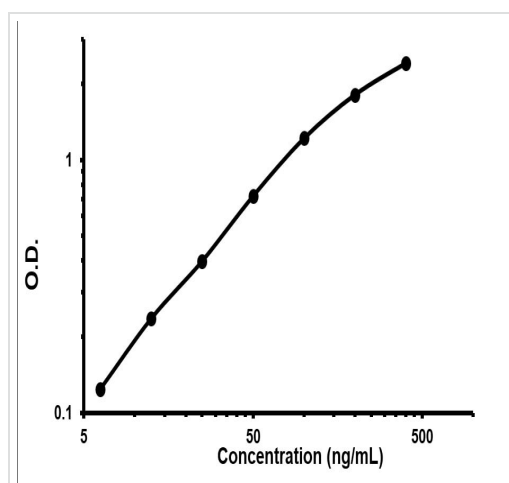


Mouse IgE measured in tissue lysates showing quantity (pg) per microgram of protein



Mouse IgE measured in biologicals showing quantity (ng) per mL of tested sample

Sandwich ELISA - ab157718 IgE Mouse ELISA Kit



Representative standard curve using ab157718.

Standard Curve

**Please note:** All products are "FOR RESEARCH USE ONLY. NOT FOR USE IN DIAGNOSTIC PROCEDURES"

### Our Abpromise to you: Quality guaranteed and expert technical support

- Replacement or refund for products not performing as stated on the datasheet
- Valid for 12 months from date of delivery
- Response to your inquiry within 24 hours
- We provide support in Chinese, English, French, German, Japanese and Spanish
- Extensive multi-media technical resources to help you
- We investigate all quality concerns to ensure our products perform to the highest standards

If the product does not perform as described on this datasheet, we will offer a refund or replacement. For full details of the Abpromise, please visit <https://www.abcam.cn/abpromise> or contact our technical team.

### Terms and conditions

- Guarantee only valid for products bought direct from Abcam or one of our authorized distributors