

Mouse HSP60 ELISA Kit ab208344

重组 SimpleStep ELISA

5 图像

概述

产品名称 小鼠HSP60 ELISA试剂盒

检测方法 Colorimetric

批次内				
样品	n	Mean	SD	CV%
NIH/3T3	5			6.8%

批次间				
样品	n	Mean	SD	CV%
NIH/3T3	3			12.5%

样品类型 Cell culture extracts, Tissue Extracts

检测类型 Sandwich (quantitative)

灵敏度 5.1 pg/ml

范围 46.875 pg/ml - 3000 pg/ml

特定样本回收率		
样品类型	平均%	范围
Serum	98	81.2% - 110.2%
Cell culture media	92.3	91.2% - 93%

检测时间 1h 30m

实验步骤 One step assay

种属反应性 与反应: Mouse

产品概述 Mouse HSP60 ELISA Kit (ab208344) is a single-wash 90 min sandwich ELISA designed for the quantitative measurement of HSP60 protein in cell culture extracts and tissue extracts. It uses our proprietary SimpleStep ELISA® technology. Quantitate Mouse HSP60 with 5.1 pg/ml sensitivity.

SimpleStep ELISA® technology employs capture antibodies conjugated to an affinity tag that is recognized by the monoclonal antibody used to coat our SimpleStep ELISA® plates. This approach to sandwich ELISA allows the formation of the antibody-analyte sandwich complex in a single step, significantly reducing assay time. See the SimpleStep ELISA® protocol summary in the image section for further details. Our SimpleStep ELISA® technology provides several benefits:

- Single-wash protocol reduces assay time to 90 minutes or less
- High sensitivity, specificity and reproducibility from superior antibodies
- Fully validated in biological samples
- 96-wells plate breakable into 12 x 8 wells strips

A 384-well SimpleStep ELISA® microplate (**ab203359**) is available to use as an alternative to the 96-well microplate provided with SimpleStep ELISA® kits.

说明

HSP60 is mitochondrial matrix protein functioning in protein folding and macromolecular assembly. HSP60 may also prevent miss-folding and promote the refolding and proper assembly of unfolded polypeptides generated under stress conditions in the mitochondrial matrix.

Abcam has not and does not intend to apply for the REACH Authorisation of customers' uses of products that contain European Authorisation list (Annex XIV) substances. It is the responsibility of our customers to check the necessity of application of REACH Authorisation, and any other relevant authorisations, for their intended uses.

平台

Pre-coated microplate (12 x 8 well strips)

性能

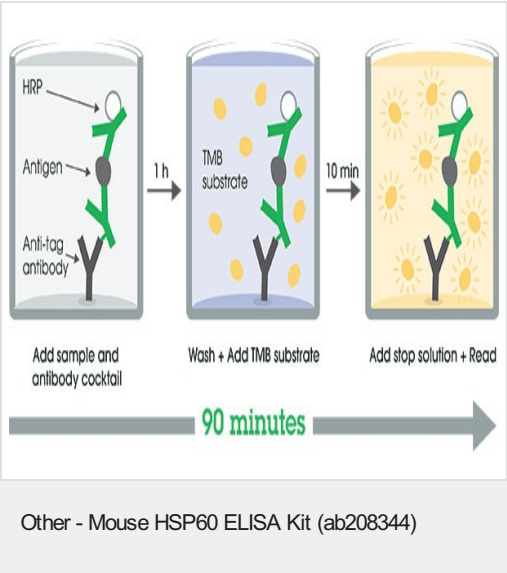
存放说明

Store at +4°C. Please refer to protocols.

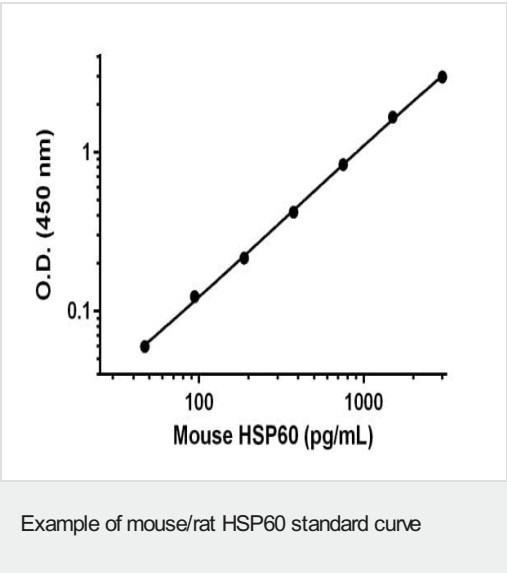
组件	1 x 96 tests
10X Mouse HSP60 Capture Antibody	1 x 600µl
10X Mouse HSP60 Detector Antibody	1 x 600µl
10X Wash Buffer PT (ab206977)	1 x 20ml
50X Cell Extraction Enhancer Solution (ab193971)	1 x 1ml
5X Cell Extraction Buffer PTR (ab193970)	1 x 10ml
Antibody Diluent 5BR	1 x 6ml
Mouse HSP60 Lyophilized Recombinant Protein	2 vials
Plate Seals	1 unit
Sample Diluent NS (ab193972)	1 x 12ml
SimpleStep Pre-Coated 96-Well Microplate (ab206978)	1 unit

组件	1 x 96 tests
Stop Solution	1 x 12ml
TMB Development Solution	1 x 12ml

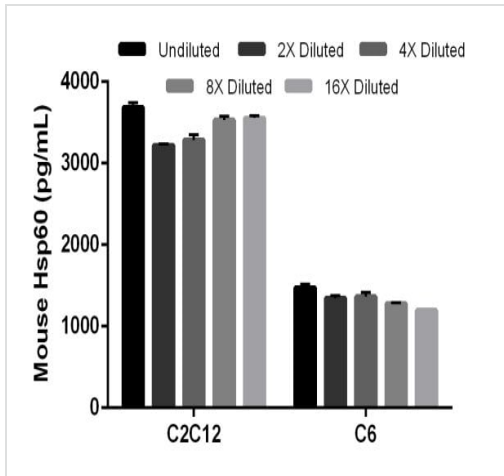
图片



SimpleStep ELISA technology allows the formation of the antibody-antigen complex in one single step, reducing assay time to 90 minutes. Add samples or standards and antibody mix to wells all at once, incubate, wash, and add your final substrate. See protocol for a detailed step-by-step guide.

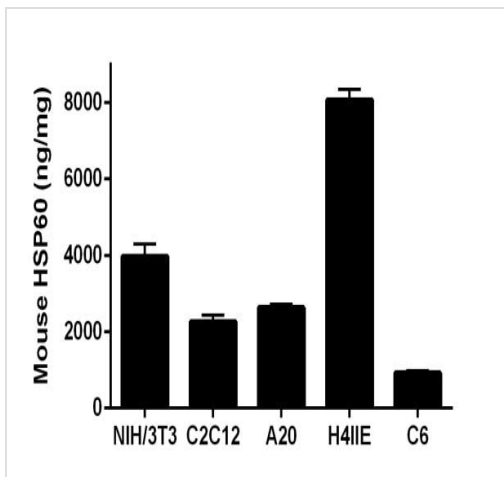


Background-subtracted data values (mean +/- SD) are graphed.



Interpolated concentrations of native HSP60 in mouse C2C12 cell extract sample and rat C6 cell extract sample based on a 1.5 µg/mL extract load

The concentrations of HSP60 were measured in duplicate and interpolated from the HSP60 standard curve and corrected for sample dilution. The interpolated dilution factor corrected values are plotted (mean +/- SD, n=2). The mean HSP60 concentration was determined to be 3,456 pg/mL in C2C12 cell extract sample and 1,347 pg/mL in C6 cell extract sample.



Interpolated concentrations of native HSP60 in mouse NIH/3T3, C2C12 and A20 extract samples and rat H4IIE and C6 cell extract samples

The concentrations of HSP60 were measured in three different dilutions in duplicate and interpolated from the HSP60 standard curve and corrected for sample dilution. The interpolated dilution factor corrected values are plotted in ng of HSP60 per mg of extract (mean +/- SD, n=3).

Powered by
recombinant antibodies



**Research with
confidence**
Consistent and
reproducible results



**Long-term and
scalable supply**
Recombinant
technology



**Success from the
first experiment**
Confirmed
specificity



**Ethical standards
compliant**
Animal-free
production

Sandwich ELISA - Mouse HSP60 ELISA Kit
(ab208344)

To learn more about the advantages of recombinant antibodies see [here](#).

Please note: All products are "FOR RESEARCH USE ONLY. NOT FOR USE IN DIAGNOSTIC PROCEDURES"

Our Abpromise to you: Quality guaranteed and expert technical support

- Replacement or refund for products not performing as stated on the datasheet
- Valid for 12 months from date of delivery
- Response to your inquiry within 24 hours
- We provide support in Chinese, English, French, German, Japanese and Spanish
- Extensive multi-media technical resources to help you
- We investigate all quality concerns to ensure our products perform to the highest standards

If the product does not perform as described on this datasheet, we will offer a refund or replacement. For full details of the Abpromise, please visit <https://www.abcam.cn/abpromise> or contact our technical team.

Terms and conditions

- Guarantee only valid for products bought direct from Abcam or one of our authorized distributors