

Mouse CXCL9 ELISA Kit ab203364

重组 SimpleStep ELISA

6 References **8 图像**

概述

产品名称 小鼠CXCL9 ELISA试剂盒

检测方法 Colorimetric

精确度 批次内

样品	n	Mean	SD	CV%
Overall	5			7.6%

批次间

样品	n	Mean	SD	CV%
Overall	3			7.5%

样品类型 Cell culture supernatant, Serum, Cell culture extracts, Tissue Extracts, Hep Plasma, EDTA Plasma, Cit plasma

检测类型 Sandwich (quantitative)

灵敏度 1.4 pg/ml

范围 6.25 pg/ml - 400 pg/ml

回收率 特定样本回收率

样品类型	平均%	范围
Serum	133.7	119.4% - 144%
Cell culture media	101.1	95.3% - 106%
Hep Plasma	87.9	87.8% - 88.1%
EDTA Plasma	115.2	108.3% - 125.6%
Cit plasma	104	95.9% - 109.2%

检测时间 1h 30m

实验步骤

One step assay

种属反应性**与反应:** Mouse**不与反应:** Cow, Pig**产品概述**

Mouse CXCL9 ELISA Kit (ab203364) is a single-wash 90 min sandwich ELISA designed for the quantitative measurement of CXCL9 protein in cell culture extracts, cell culture supernatant, cit plasma, edta plasma, hep plasma, serum, and tissue extracts. It uses our proprietary SimpleStep ELISA® technology. Quantitate Mouse CXCL9 with 1.4 pg/ml sensitivity.

SimpleStep ELISA® technology employs capture antibodies conjugated to an affinity tag that is recognized by the monoclonal antibody used to coat our SimpleStep ELISA® plates. This approach to sandwich ELISA allows the formation of the antibody-analyte sandwich complex in a single step, significantly reducing assay time. See the SimpleStep ELISA® protocol summary in the image section for further details. Our SimpleStep ELISA® technology provides several benefits:

- Single-wash protocol reduces assay time to 90 minutes or less
- High sensitivity, specificity and reproducibility from superior antibodies
- Fully validated in biological samples
- 96-wells plate breakable into 12 x 8 wells strips

A 384-well SimpleStep ELISA® microplate ([ab203359](#)) is available to use as an alternative to the 96-well microplate provided with SimpleStep ELISA® kits.

说明

MIG (Monokine Induced by Gamma interferon) is a small cytokine belonging to the CXC motif chemokine family, thus named CXC motif chemokine family ligand 9 (CXCL9). CXCL9 is a cytokine that affects the growth, movement, or activation state of cells that participate in immune and inflammatory response. CXCL9 is a T-cell chemoattractant, which is induced by IFN- γ .

Abcam has not and does not intend to apply for the REACH Authorisation of customers' uses of products that contain European Authorisation list (Annex XIV) substances.

It is the responsibility of our customers to check the necessity of application of REACH Authorisation, and any other relevant authorisations, for their intended uses.

平台

Microplate (12 x 8 well strips)

性能**存放说明**

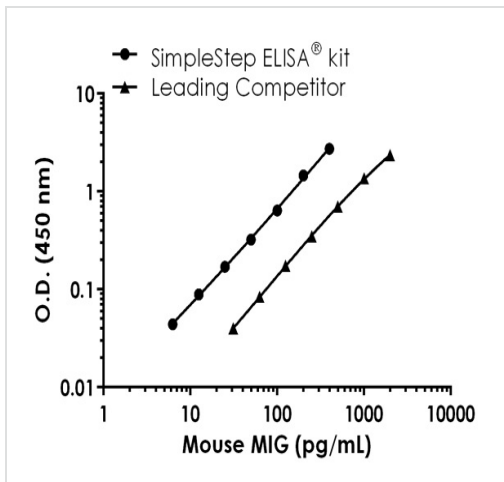
Store at +4°C. Please refer to protocols.

组件	1 x 96 tests
10X Mouse CXCL9 Capture Antibody	1 x 600 μ l
10X Mouse CXCL9 Detector Antibody	1 x 600 μ l
10X Wash Buffer PT (ab206977)	1 x 20ml
50X Cell Extraction Enhancer Solution (ab193971)	1 x 1ml
5X Cell Extraction Buffer PTR (ab193970)	1 x 10ml

组件	1 x 96 tests
Antibody Diluent CPI - HAMA Blocker (ab193969)	1 x 6ml
Mouse CXCL9 Lyophilized Recombinant Protein	2 vials
Plate Seals	1 unit
Sample Diluent 25BS	1 x 20ml
Sample Diluent NS (ab193972)	1 x 50ml
SimpleStep Pre-Coated 96-Well Microplate (ab206978)	1 unit
Stop Solution	1 x 12ml
TMB Development Solution	1 x 12ml

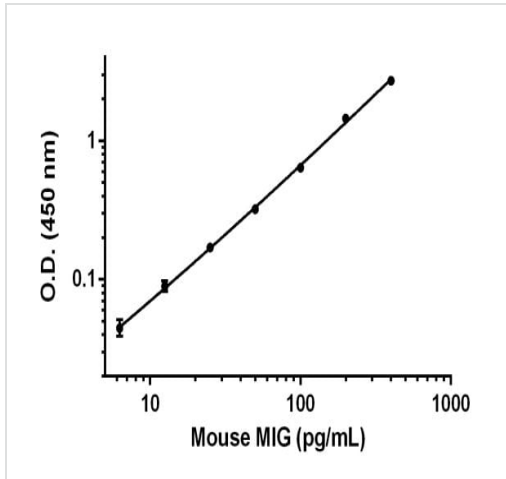
功能	Cytokine that affects the growth, movement, or activation state of cells that participate in immune and inflammatory response. Chemotactic for activated T-cells. Binds to CXCR3.
序列相似性	Belongs to the intercrine alpha (chemokine CxC) family.
细胞定位	Secreted.

图片



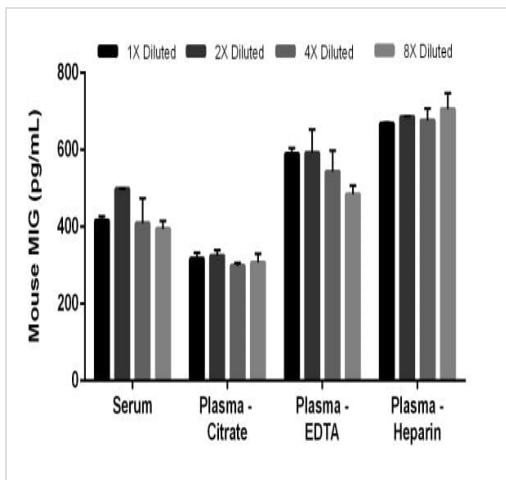
Standard curve comparison between mouse MIG (CXCL9) SimpleStep ELISA[®] kit and traditional ELISA kit from leading competitor. SimpleStep ELISA kit shows a 4-fold increase in sensitivity.

Mouse MIG (CXCL9) standard curve comparison data.



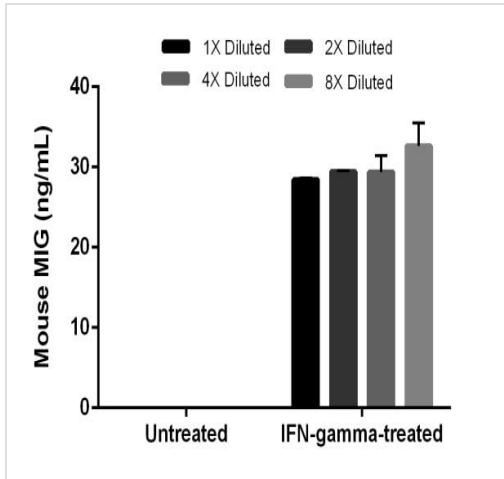
Background-subtracted data values (mean +/- SD) are graphed.

Example of MIG standard curve prepared in Sample Diluent NS.



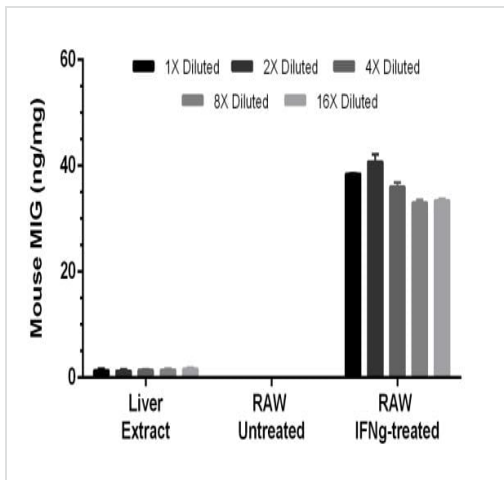
The concentrations of MIG were measured in duplicates, interpolated from the MIG standard curve and corrected for sample dilution. Note that 1X Diluted serum and plasma (citrate and EDTA) samples were pre-diluted to 50%. Note that 1X Diluted plasma (heparin) samples were pre-diluted to 25%. The interpolated, dilution factor-corrected values are plotted in pg of MIG per mL of neat sample (mean +/- SD, n=2).

Interpolated concentrations of MIG in mouse serum and plasma samples.



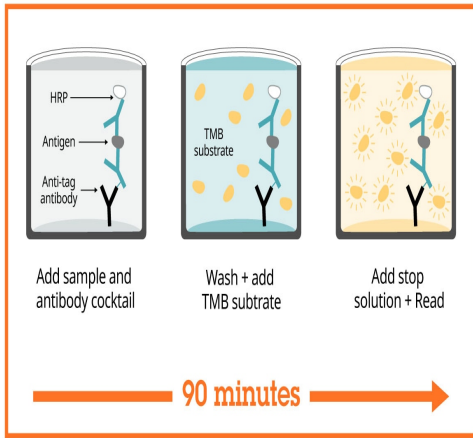
IFN-gamma treatment of Raw 264.7 cell induces secretion of MIG.

Raw 264.7 cells were cultured in the absence or presence of 500 ng/mL mouse recombinant Interferon-gamma protein for 72 hours. The cell culture supernatant samples were collected. The concentrations of MIG were measured in the diluted supernatants in duplicates, interpolated from the MIG standard curve and corrected for sample dilution. Note that 1X Diluted supernatant samples were pre-diluted to 2%. The interpolated, dilution factor-corrected values are plotted in ng of MIG per mL of neat sample (mean +/- SD, n=2).



IFN-gamma treatment of Raw 264.7 cell induces expression of MIG.

Raw 264.7 cells were cultured in the absence or presence of 500 ng/mL Mouse recombinant Interferon-gamma protein for 72 hours. The concentrations of MIG were measured in diluted extracts of these cells and of Mouse liver in duplicates, interpolated from the MIG standard curve and corrected for sample dilution. Note that 1X Diluted Raw 264.7 cells extract samples were at 25 µg/mL. Note that 1X Diluted Mouse liver extract samples were at 500 µg/mL. The interpolated, dilution factor-corrected values are plotted in ng of MIG per mg of total protein (mean +/- SD, n=2).



Sandwich ELISA - Mouse CXCL9 ELISA Kit
(ab203364)

SimpleStep ELISA technology allows the formation of the antibody-antigen complex in one single step, reducing assay time to 90 minutes. Add samples or standards and antibody mix to wells all at once, incubate, wash, and add your final substrate. See protocol for a detailed step-by-step guide.

Powered by
recombinant antibodies

- Research with confidence**
Consistent and reproducible results
- Long-term and scalable supply**
Recombinant technology
- Success from the first experiment**
Confirmed specificity
- Ethical standards compliant**
Animal-free production

Sandwich ELISA - Mouse CXCL9 ELISA Kit
(ab203364)

To learn more about the advantages of recombinant antibodies see [here](#).

Get more done with SimpleStep ELISA



Easy to use
Single-wash 90-minute protocol



Flexible
Matched antibody pairs available



Precision antibodies
High sensitivity, specificity and reproducibility



Scalable
Now in 10-pack and 384-well formats

Sandwich ELISA - Mouse CXCL9 ELISA Kit
(ab203364)

To learn more about the advantages of SimpleStep ELISA[®] kits see [here](#).

Please note: All products are "FOR RESEARCH USE ONLY. NOT FOR USE IN DIAGNOSTIC PROCEDURES"

Our Abpromise to you: Quality guaranteed and expert technical support

- Replacement or refund for products not performing as stated on the datasheet
- Valid for 12 months from date of delivery
- Response to your inquiry within 24 hours
- We provide support in Chinese, English, French, German, Japanese and Spanish
- Extensive multi-media technical resources to help you
- We investigate all quality concerns to ensure our products perform to the highest standards

If the product does not perform as described on this datasheet, we will offer a refund or replacement. For full details of the Abpromise, please visit <https://www.abcam.cn/abpromise> or contact our technical team.

Terms and conditions

- Guarantee only valid for products bought direct from Abcam or one of our authorized distributors