

Human Resistin ELISA Kit ab183364

SimpleStep ELISA

3 References 4 图像

概述

产品名称 人Resistin ELISA试剂盒

检测方法 Colorimetric

批次内				
样品	n	Mean	SD	CV%
Serum	9			3%

批次间				
样品	n	Mean	SD	CV%
Serum	3			6%

样品类型 Cell culture supernatant, Serum, Hep Plasma, EDTA Plasma, Cit plasma

检测类型 Sandwich (quantitative)

灵敏度 24 pg/ml

范围 78.1 pg/ml - 5000 pg/ml

特定样本回收率		
样品类型	平均%	范围
Serum	94	88% - 100%
Cell culture media	106	106% - 107%
Hep Plasma	95	84% - 110%
EDTA Plasma	96	88% - 104%
Cit plasma	78	68% - 90%

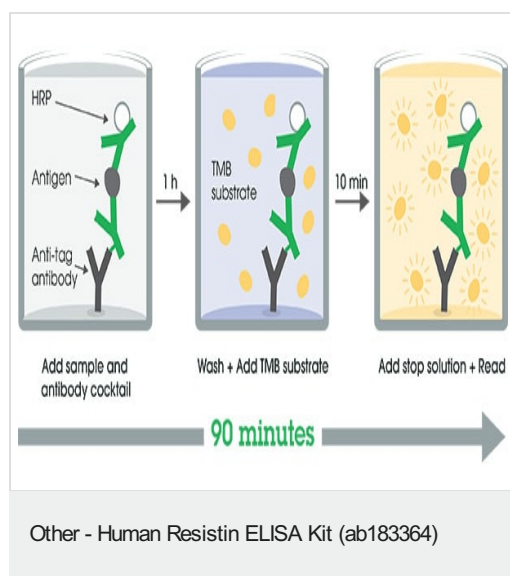
检测时间 1h 30m

实验步骤 One step assay

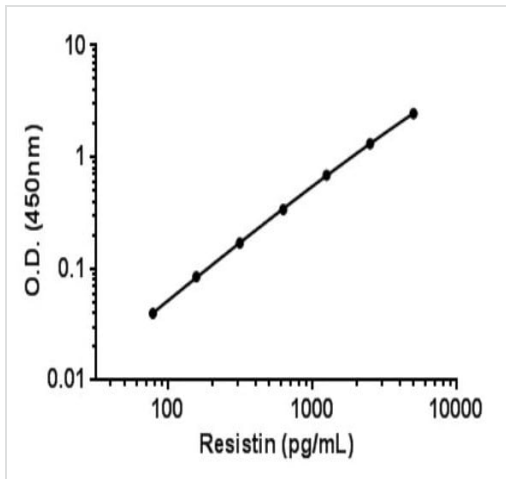
组件	1 x 96 tests
Human Resistin Lyophilized Recombinant Protein	2 vials
Plate Seals	1 unit
Sample Diluent NS (ab193972)	1 x 50ml
SimpleStep Pre-Coated 96-Well Microplate (ab206978)	1 unit
Stop Solution	1 x 12ml
TMB Development Solution	1 x 12ml

功能	Hormone that seems to suppress insulin ability to stimulate glucose uptake into adipose cells. Potentially links obesity to diabetes.
组织特异性	Expressed only in fatty tissues.
序列相似性	Belongs to the resistin/FIZZ family.
细胞定位	Secreted.

图片

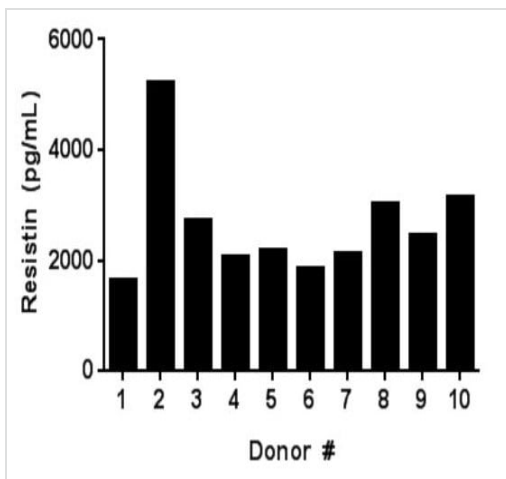


SimpleStep ELISA technology allows the formation of the antibody-antigen complex in one single step, reducing assay time to 90 minutes. Add samples or standards and antibody mix to wells all at once, incubate, wash, and add your final substrate. See protocol for a detailed step-by-step guide.



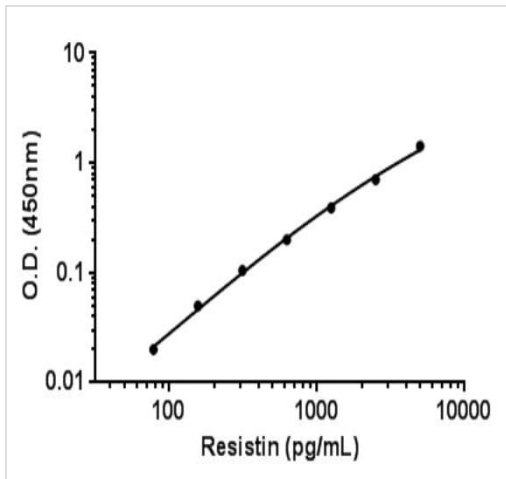
Example of Resistin standard curve.

Background-subtracted data values (mean \pm SD) are graphed



Levels of Resistin in Normal Serum.

The levels of native Resistin in serum samples were tested from ten individual healthy donors. Levels were interpolated from the standard curve in Sample Diluent NS. The mean level of Resistin was 2.6 ng/mL with a range of 1.6 to 5.3 ng/mL and a standard deviation of 1 ng/mL.



Background-subtracted data values (mean \pm SD) are graphed.

Example of Resistin standard curve in cell culture media.

Please note: All products are "FOR RESEARCH USE ONLY. NOT FOR USE IN DIAGNOSTIC PROCEDURES"

Our Abpromise to you: Quality guaranteed and expert technical support

- Replacement or refund for products not performing as stated on the datasheet
- Valid for 12 months from date of delivery
- Response to your inquiry within 24 hours
- We provide support in Chinese, English, French, German, Japanese and Spanish
- Extensive multi-media technical resources to help you
- We investigate all quality concerns to ensure our products perform to the highest standards

If the product does not perform as described on this datasheet, we will offer a refund or replacement. For full details of the Abpromise, please visit <https://www.abcam.cn/abpromise> or contact our technical team.

Terms and conditions

- Guarantee only valid for products bought direct from Abcam or one of our authorized distributors