

Human PAI1 ELISA Kit (SERPINE1) ab108891

9 References 3 图像

概述

产品名称	人PAI1 ELISA试剂盒(SERPINE1)			
检测方法	Colorimetric			
精确度	批次内			
	样品	n	Mean	SD
	Overall			3.9%
	批次间			
	样品	n	Mean	SD
	Overall			8.4%
样品类型	Cell culture supernatant, Serum, Plasma, Tissue, Cell Lysate, Cerebral Spinal Fluid			
检测类型	Sandwich (quantitative)			
灵敏度	= 19 pg/ml			
范围	0.15 ng/ml - 1.25 ng/ml			
回收率	98 %			
检测时间	4h 00m			
实验步骤	Multiple steps standard assay			
种属反应性	与反应: Human			
产品概述	Abcam's PAI1 (SERPINE1) Human <i>in vitro</i> ELISA (Enzyme-Linked Immunosorbent Assay) kit is designed for the quantitative measurement of PAI1 concentrations in Human plasma, serum, tissue extracts and cell culture supernatants.			

A PAI1 specific antibody has been precoated onto 96-well plates and blocked. Standards or test samples are added to the wells and subsequently a PAI1 specific biotinylated detection antibody is added and then followed by washing with wash buffer. Streptavidin-Peroxidase Conjugate is added and unbound conjugates are washed away with wash buffer. TMB is then used to visualize Streptavidin-Peroxidase enzymatic reaction. TMB is catalyzed by Streptavidin-Peroxidase to produce a blue color product that changes into yellow after adding acidic stop solution. The density of yellow coloration is directly proportional to the amount of PAI1 captured in plate.

This assay recognizes both natural and recombinant Human PAI-1.

The entire kit may be stored at -20°C for long term storage before reconstitution - Avoid repeated freeze-thaw cycles.

平台 Microplate

性能

存放说明 Store at -20°C. Please refer to protocols.

组件	1 x 96 tests
100X Streptavidin-Peroxidase Conjugate	1 x 80µl
10X Diluent N Concentrate	1 x 30ml
1X Standard Diluent	1 x 2ml
20X Wash Buffer Concentrate	2 x 30ml
50X Biotinylated Human PAI1 Antibody	1 x 120µl
Chromogen Substrate	1 x 7ml
PAI1 Microplate (12 x 8 well strips)	1 unit
PAI1 Standard	1 vial
Sealing Tapes	3 units
Stop Solution	1 x 11ml

功能 This inhibitor acts as 'bait' for tissue plasminogen activator, urokinase, and protein C. Its rapid interaction with TPA may function as a major control point in the regulation of fibrinolysis.

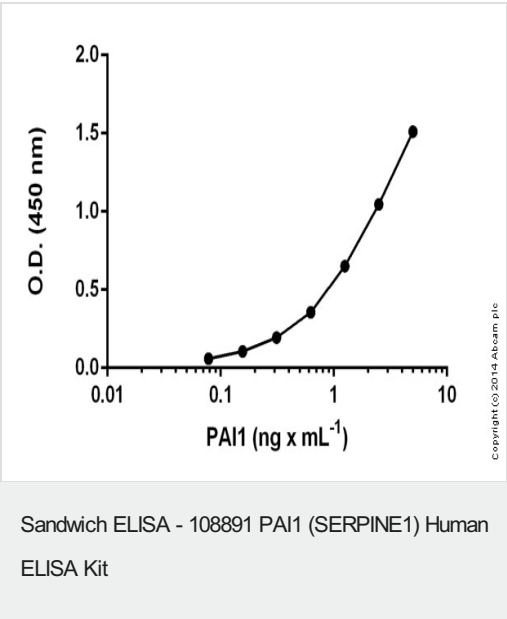
组织特异性 Found in plasma and platelets and in endothelial, hepatoma and fibrosarcoma cells.

疾病相关 Defects in SERPINE1 are the cause of plasminogen activator inhibitor-1 deficiency (PAI-1D) [MIM:613329]. It is a hematologic disorder characterized by increased bleeding after trauma, injury, or surgery. Affected females have menorrhagia. The bleeding defect is due to increased fibrinolysis of fibrin blood clots due to deficiency of plasminogen activator inhibitor-1, which inhibits tissue and urinary activators of plasminogen.
Note=High concentrations of SERPINE1 seem to contribute to the development of venous but not arterial occlusions.

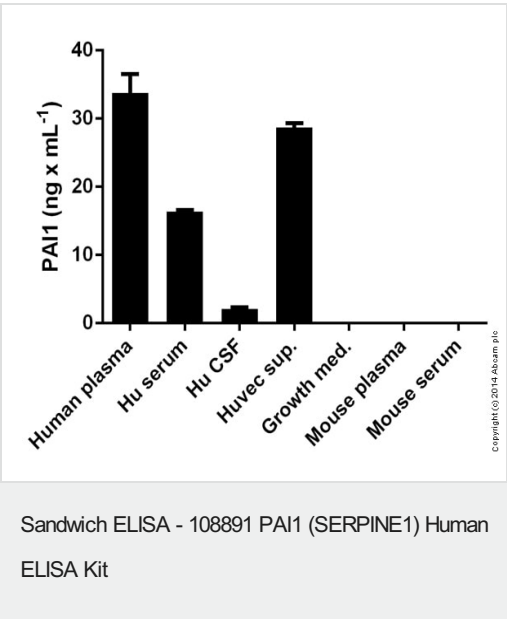
序列相似性 Belongs to the serpin family.

翻译后修饰 Inactivated by proteolytic attack of the urokinase-type (u-PA) and the tissue-type (TPA), cleaving the 369-Arg-Met-370 bond.

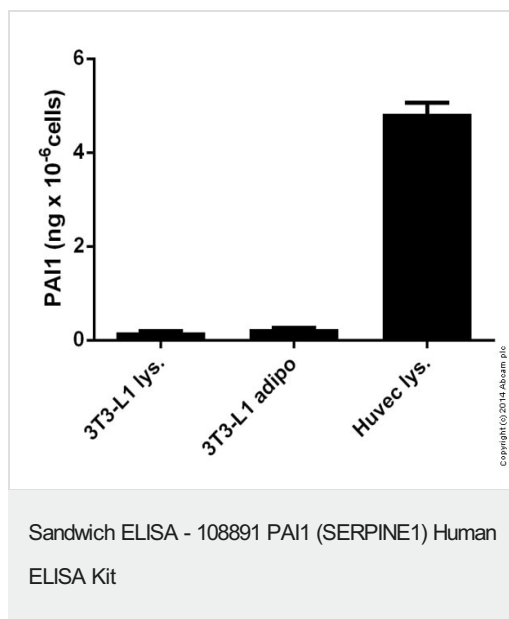
细胞定位 Secreted.



Standard curve mean of duplicates (+/- SD) with background readings subtracted



PAI1 measured in various samples showing quantity (ng) per mL of tested sample



PAI1 measured in cell lysates showing quantity (ng) per 1 million cells tested

Please note: All products are "FOR RESEARCH USE ONLY. NOT FOR USE IN DIAGNOSTIC PROCEDURES"

Our Abpromise to you: Quality guaranteed and expert technical support

- Replacement or refund for products not performing as stated on the datasheet
- Valid for 12 months from date of delivery
- Response to your inquiry within 24 hours
- We provide support in Chinese, English, French, German, Japanese and Spanish
- Extensive multi-media technical resources to help you
- We investigate all quality concerns to ensure our products perform to the highest standards

If the product does not perform as described on this datasheet, we will offer a refund or replacement. For full details of the Abpromise, please visit <https://www.abcam.cn/abpromise> or contact our technical team.

Terms and conditions

- Guarantee only valid for products bought direct from Abcam or one of our authorized distributors