

Human MMP9 ELISA Kit (lyophilized) ab100610

★★★★★ [2 Abreviews](#) [42 References](#) [2 图像](#)

概述

产品名称	人MMP9 ELISA试剂盒 (lyophilized)
检测方法	Colorimetric
样品类型	Cell culture supernatant, Serum, Plasma
检测类型	Sandwich (quantitative)
灵敏度	< 10 pg/ml
范围	8.23 pg/ml - 6000 pg/ml
回收率	95 %

特定样本回收率

样品类型	平均%	范围
Cell culture supernatant	95.38	84% - 104%
Serum	96.23	84% - 103%
Plasma	94.64	83% - 102%

实验步骤	Multiple steps standard assay
种属反应性	与反应: Human
产品概述	<p>Abcam's MMP9 Human ELISA (Enzyme-Linked Immunosorbent Assay) kit is an <i>in vitro</i> enzyme-linked immunosorbent assay for the quantitative measurement of Human MMP9 pro and active forms in serum, plasma (Collect plasma using heparin as an anticoagulant. EDTA and Citrate are not recommended), and cell culture supernatants.</p> <p>This assay employs an antibody specific for Human MMP9 coated on a 96- well plate. Standards and samples are pipetted into the wells and MMP9 present in a sample is bound to the wells by the immobilized antibody. The wells are washed and biotinylated anti-Human MMP9 antibody is added. After washing away unbound biotinylated antibody, HRP-conjugated streptavidin is pipetted to the wells. The wells are again washed, a TMB substrate solution is added to the wells and color develops in proportion to the amount of MMP9 bound. The Stop Solution changes the color from blue to yellow, and the intensity of the color is measured at 450 nm.</p>
说明	Optimisation may be required with urine samples.
平台	Microplate

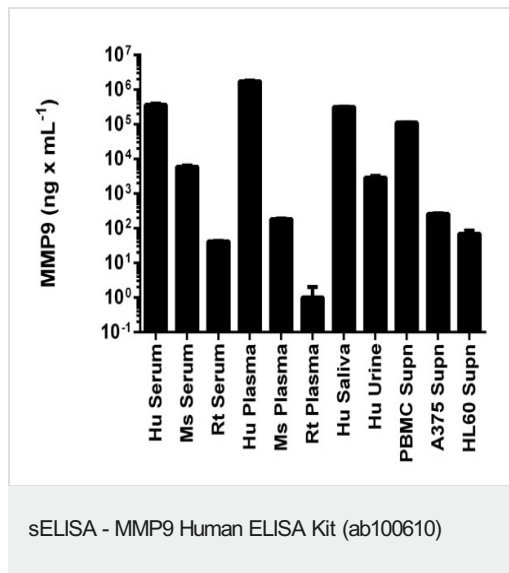
性能

存放说明 Store at -20°C. Please refer to protocols.

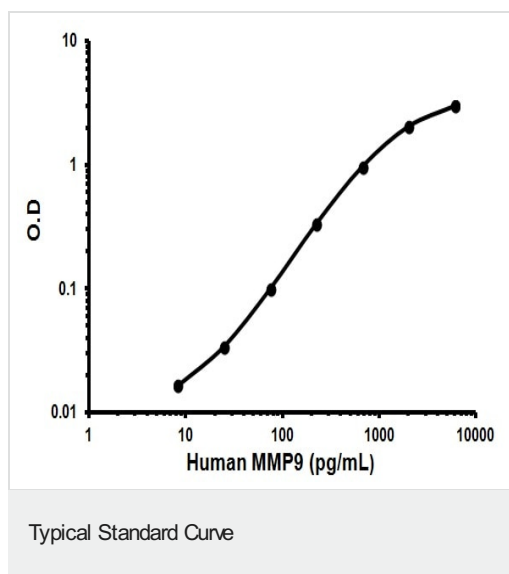
组件	1 x 96 tests
20X Wash Buffer	1 x 25ml
400X HRP-Streptavidin Concentrate	1 x 200µl
5X Assay Diluent	1 x 15ml
Biotinylated anti-Human MMP9	2 vials
MMP9 Microplate (12 x 8 wells)	1 unit
Recombinant Human MMP9 Standard (lyophilized)	2 vials
Stop Solution	1 x 8ml
TMB One-Step Substrate Reagent	1 x 12ml

功能	May play an essential role in local proteolysis of the extracellular matrix and in leukocyte migration. Could play a role in bone osteoclastic resorption. Cleaves KiSS1 at a Gly-Leu bond. Cleaves type IV and type V collagen into large C-terminal three quarter fragments and shorter N-terminal one quarter fragments. Degrades fibronectin but not laminin or Pz-peptide.
组织特异性	Produced by normal alveolar macrophages and granulocytes.
疾病相关	Intervertebral disc disease Metaphyseal anadysplasia 2
序列相似性	Belongs to the peptidase M10A family. Contains 3 fibronectin type-II domains. Contains 4 hemopexin repeats.
结构域	The conserved cysteine present in the cysteine-switch motif binds the catalytic zinc ion, thus inhibiting the enzyme. The dissociation of the cysteine from the zinc ion upon the activation-peptide release activates the enzyme.
翻译后修饰	Processing of the precursor yields different active forms of 64, 67 and 82 kDa. Sequentially processing by MMP3 yields the 82 kDa matrix metalloproteinase-9. N- and O-glycosylated.
细胞定位	Secreted, extracellular space, extracellular matrix.

图片



MMP9 measured in biological fluids and cell culture medium with background signal subtracted (duplicates +/- SD).



Representative Standard Curve using ab100610.

**Please note:** All products are "FOR RESEARCH USE ONLY. NOT FOR USE IN DIAGNOSTIC PROCEDURES"

### Our Abpromise to you: Quality guaranteed and expert technical support

- Replacement or refund for products not performing as stated on the datasheet
- Valid for 12 months from date of delivery
- Response to your inquiry within 24 hours
- We provide support in Chinese, English, French, German, Japanese and Spanish
- Extensive multi-media technical resources to help you

- We investigate all quality concerns to ensure our products perform to the highest standards

If the product does not perform as described on this datasheet, we will offer a refund or replacement. For full details of the Abpromise, please visit <https://www.abcam.cn/abpromise> or contact our technical team.

### **Terms and conditions**

---

- Guarantee only valid for products bought direct from Abcam or one of our authorized distributors