

Human MMP13 ELISA Kit ab221839

重组

★★★★★ [2 Abreviews](#) [2 References](#) [4 图像](#)

概述

| | | | | | |
|-------|--|-----|------|-------------|------|
| 产品名称 | 人MMP13 ELISA试剂盒 | | | | |
| 检测方法 | Colorimetric | | | | |
| 精确度 | 批次内 | | | | |
| | 样品 | n | Mean | SD | CV% |
| | Supernatant | 8 | | | 5.9% |
| | 批次间 | | | | |
| | 样品 | n | Mean | SD | CV% |
| | Supernatant | 3 | | | 5% |
| 样品类型 | Saliva, Urine, Serum, Cell culture media | | | | |
| 检测类型 | Sandwich (quantitative) | | | | |
| 灵敏度 | 5.7 pg/ml | | | | |
| 范围 | 39 pg/ml - 2500 pg/ml | | | | |
| 回收率 | 特定样本回收率 | | | | |
| | 样品类型 | 平均% | | 范围 | |
| | Saliva | 80 | | 78% - 82% | |
| | Urine | 84 | | 74% - 93% | |
| | Serum | 83 | | 78% - 88% | |
| | Cell culture media | 102 | | 101% - 103% | |
| 检测时间 | 2h 30m | | | | |
| 实验步骤 | Multiple steps standard assay | | | | |
| 种属反应性 | 与反应: Cow, Human, Pig | | | | |

产品概述

Human MMP13 ELISA Kit (ab221839) is a single-wash 90 min sandwich ELISA designed for the quantitative measurement of MMP13 protein in saliva, serum, urine, and cell culture media. It uses our proprietary SimpleStep ELISA® technology. Quantitate Human MMP13 with 5.7 pg/ml sensitivity.

SimpleStep ELISA® technology employs capture antibodies conjugated to an affinity tag that is recognized by the monoclonal antibody used to coat our SimpleStep ELISA® plates. This approach to sandwich ELISA allows the formation of the antibody-analyte sandwich complex in a single step, significantly reducing assay time. See the SimpleStep ELISA® protocol summary in the image section for further details. Our SimpleStep ELISA® technology provides several benefits:

- Single-wash protocol
- High sensitivity, specificity and reproducibility from superior antibodies
- Fully validated in biological samples
- 96-wells plate breakable into 12 x 8 wells strips

A 384-well SimpleStep ELISA® microplate (**ab203359**) is available to use as an alternative to the 96-well microplate provided with SimpleStep ELISA® kits.

说明

Human MMP-13, matrix metalloproteinase 13, also known as Collagenase 3 is a secreted protein encoded by the gene MMP13. MMP-13 belongs to the matrix metalloproteinase family, which are calcium dependent endopeptidases. MMP-13 degrades type I, II, and III collagen. The MMP protein-13 is expressed as an inactive pro-form composed of an 83-amino acid pro-peptide, an amino acid catalytic domain, and hemopexin-like domain. Dissociation of a zinc ion from the cysteine-switch motif releases the activation-peptide, thus activating the enzyme. MMP-13 is involved in various processes, such as, embryonic development, ossification, wound healing, and tissue remodeling.

平台

Microplate (12 x 8 well strips)

性能

存放说明

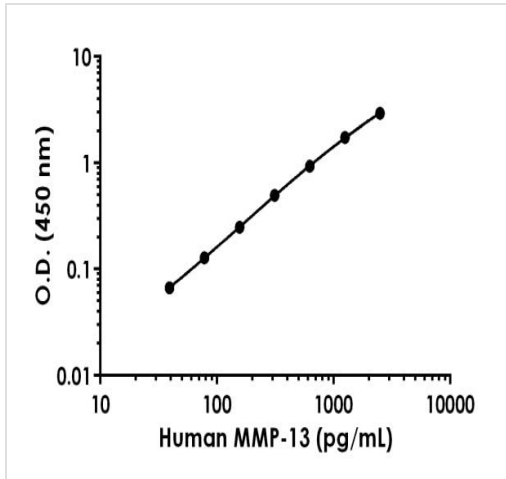
Store at +4°C. Please refer to protocols.

| 组件 | 1 x 96 tests |
|--|--------------|
| 10X Human MMP-13 Capture Antibody | 1 x 600µl |
| 10X Human MMP-13 Detector Antibody | 1 x 600µl |
| 10X Wash Buffer PT (ab206977) | 1 x 20ml |
| Antibody Diluent 4BI | 1 x 6ml |
| Human MMP-13 Lyophilized Recombinant Protein | 1 x 2 vials |
| Plate Seals | 1 unit |
| Sample Diluent NS (ab193972) | 2 x 50ml |
| | |

| 组件 | 1 x 96 tests |
|---|--------------|
| SimpleStep Pre-Coated 96-Well Microplate (ab206978) | 1 unit |
| Stop Solution | 1 x 12ml |
| Streptavidin-HRP | 1 x 100µl |
| TMB Development Solution | 1 x 12ml |

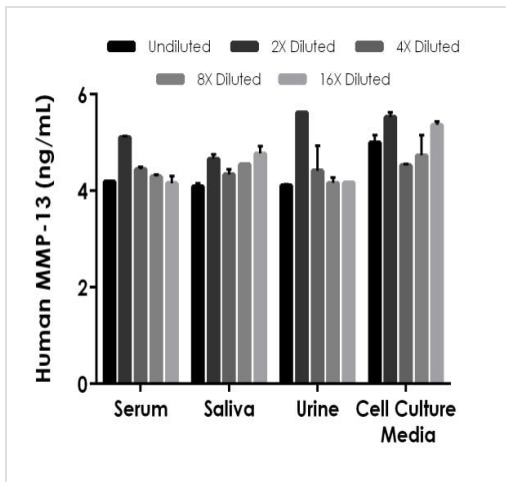
| | |
|-------|--|
| 功能 | Degrades collagen type I. Does not act on gelatin or casein. Could have a role in tumoral process. |
| 组织特异性 | Seems to be specific to breast carcinomas. |
| 疾病相关 | <p>Defects in MMP13 are the cause of spondyloepimetaphyseal dysplasia Missouri type (SEMD-MO) [MIM:602111]. A bone disease characterized by moderate to severe metaphyseal changes, mild epiphyseal involvement, rhizomelic shortening of the lower limbs with bowing of the femora and/or tibiae, coxa vara, genu varum and pear-shaped vertebrae in childhood. Epimetaphyseal changes improve with age.</p> <p>Defects in MMP13 are the cause of metaphyseal anadysplasia type 1 (MANDP1) [MIM:602111]. Metaphyseal anadysplasia consists of an abnormal bone development characterized by severe skeletal changes that, in contrast with the progressive course of most other skeletal dysplasias, resolve spontaneously with age. Clinical characteristics are evident from the first months of life and include slight shortness of stature and a mild varus deformity of the legs. Patients attain a normal stature in adolescence and show improvement or complete resolution of varus deformity of the legs and rhizomelic micromelia.</p> |
| 序列相似性 | <p>Belongs to the peptidase M10A family.</p> <p>Contains 4 hemopexin-like domains.</p> |
| 结构域 | The conserved cysteine present in the cysteine-switch motif binds the catalytic zinc ion, thus inhibiting the enzyme. The dissociation of the cysteine from the zinc ion upon the activation-peptide release activates the enzyme. |
| 细胞定位 | Secreted > extracellular space > extracellular matrix. |

图片



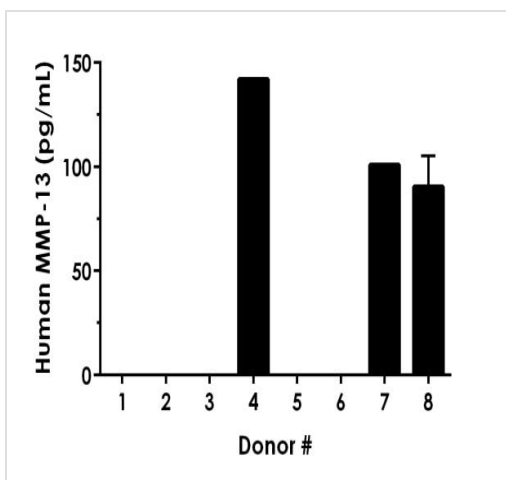
Background-subtracted data values (mean \pm SD) are graphed.

Example of human MMP-13 standard curve in
Sample Diluent NS



The concentrations of MMP-13 were measured in duplicates, interpolated from the MMP-13 standard curves and corrected for sample dilution. Undiluted samples are as follows: serum 50%, saliva 50%, urine 50%, and RPMI media 50%. The interpolated dilution factor corrected values are plotted (mean \pm SD, $n=2$).

Interpolated concentrations of spiked MMP-13 in
human serum, saliva, urine, and cell culture media
samples



Interpolated dilution factor corrected values are plotted (mean \pm SD, $n=2$). The mean MMP-13 concentration was determined to be 32 pg/mL with a range of N.D. – 142 pg/mL.

Serum from ten individual healthy human donors was
measured in duplicate

Powered by
recombinant antibodies



Research with confidence
Consistent and reproducible results



Long-term and scalable supply
Recombinant technology



Success from the first experiment
Confirmed specificity



Ethical standards compliant
Animal-free production

Sandwich ELISA - Human MMP13 ELISA Kit
(ab221839)

To learn more about the advantages of recombinant antibodies see [here](#).

Please note: All products are "FOR RESEARCH USE ONLY. NOT FOR USE IN DIAGNOSTIC PROCEDURES"

Our Abpromise to you: Quality guaranteed and expert technical support

- Replacement or refund for products not performing as stated on the datasheet
- Valid for 12 months from date of delivery
- Response to your inquiry within 24 hours
- We provide support in Chinese, English, French, German, Japanese and Spanish
- Extensive multi-media technical resources to help you
- We investigate all quality concerns to ensure our products perform to the highest standards

If the product does not perform as described on this datasheet, we will offer a refund or replacement. For full details of the Abpromise, please visit <https://www.abcam.cn/abpromise> or contact our technical team.

Terms and conditions

- Guarantee only valid for products bought direct from Abcam or one of our authorized distributors