

Human MIF ELISA Kit ab100594

[2 References](#) [6 图像](#)

概述

| | |
|------|---|
| 产品名称 | 人MIF ELISA试剂盒 |
| 检测方法 | Colorimetric |
| 样品类型 | Cell culture supernatant, Serum, Plasma |
| 检测类型 | Sandwich (quantitative) |
| 灵敏度 | < 6 pg/ml |
| 范围 | 8.23 pg/ml - 6000 pg/ml |
| 回收率 | 94 % |

特定样本回收率

| 样品类型 | 平均% | 范围 |
|--------------------------|-------|------------|
| Cell culture supernatant | 94.68 | 83% - 103% |
| Serum | 93.48 | 82% - 102% |
| Plasma | 95.41 | 84% - 103% |

实验步骤 Multiple steps standard assay

种属反应性 与反应: Human

产品概述 Abcam's MIF Human ELISA (Enzyme-Linked Immunosorbent Assay) kit is an *in vitro* enzyme-linked immunosorbent assay for the quantitative measurement of Human MIF in serum, plasma (collect plasma using heparin as an anticoagulant. EDTA and Citrate are not recommended), and cell culture supernatants.

This assay employs an antibody specific for Human MIF coated on a 96-well plate. Standards and samples are pipetted into the wells and MIF present in a sample is bound to the wells by the immobilized antibody. The wells are washed and biotinylated anti-Human MIF antibody is added. After washing away unbound biotinylated antibody, HRP-conjugated streptavidin is pipetted to the wells. The wells are again washed, a TMB substrate solution is added to the wells and color develops in proportion to the amount of MIF bound. The Stop Solution changes the color from blue to yellow, and the intensity of the color is measured at 450 nm

说明 Optimization may be required with urine samples.

平台 Microplate

性能

存放说明

Store at -20°C. Please refer to protocols.

| 组件 | 1 x 96 tests |
|--|--------------|
| 20X Wash Buffer | 1 x 25ml |
| 300X HRP-Streptavidin Concentrate | 1 x 200µl |
| 5X Assay Diluent B | 1 x 15ml |
| Assay Diluent A | 1 x 30ml |
| Biotinylated anti-Human MIF | 2 vials |
| MIF Microplate (12 x 8 wells) | 1 unit |
| Recombinant Human MIF Standard (lyophilized) | 2 vials |
| Stop Solution | 1 x 8ml |
| TMB One-Step Substrate Reagent | 1 x 12ml |

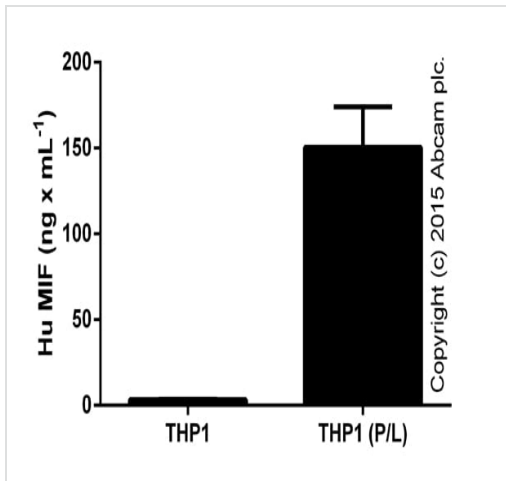
相关性

MIF is a proinflammatory cytokine involved in many inflammatory reactions and disorders. MIF (macrophage migration inhibitory factor) was one of the first cytokines to be discovered and was initially described as a T cell-derived factor that inhibits the random migration of macrophages (Weiser 1989). Recently, MIF was rediscovered as a pituitary hormone that act as the counterregulatory hormone for glucocorticoid action within the immune system (Bernhagen 1993, Mitchell 1995). MIF was released from macrophages and T cells in response to physiological concentrations of glucocorticoids. The secreted MIF counter-regulates the immunosuppressive effects of steroids on immune cell activation and cytokine production (Bucala 1998). MIF plays a critical role in the host control of inflammation and immunity. MIF is involved in both autoimmune disorders and tumorigenesis.

细胞定位

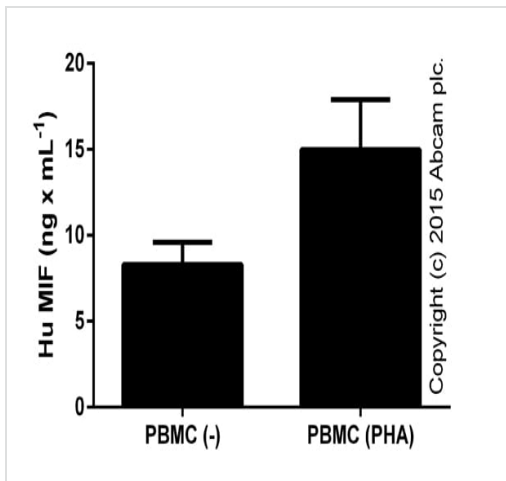
Secreted. Cytoplasm. Note: Does not have a cleavable signal sequence and is secreted via a specialized, non-classical pathway. Secreted by macrophages upon stimulation by bacterial lipopolysaccharide (LPS), or by M.tuberculosis antigens.

图片



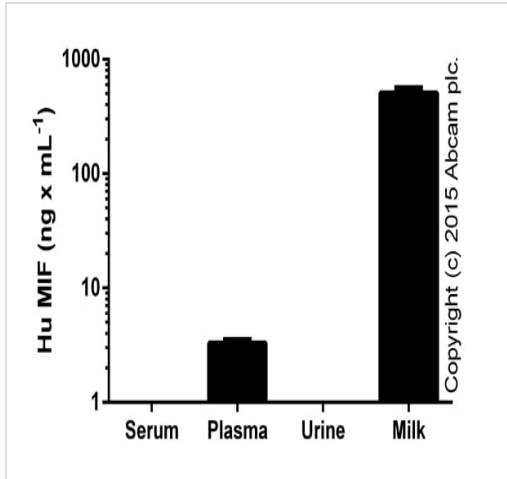
ELISA: MIF Human ELISA Kit (ab100594)

MIF in THP1 supernatants from control cells or cells stimulated (P/L) for 24 hours with 50 ng x mL⁻¹ PMA ([ab120297](#)) and 1 ug x mL⁻¹ LPS for the last 6 hours. Samples tested in the range of 1/3-1/30 (duplicates, +/- SD).



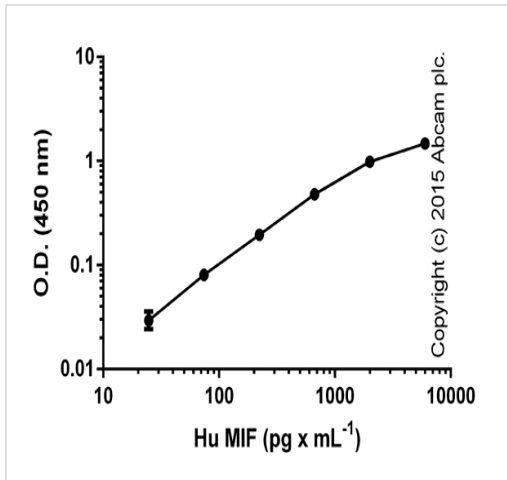
ELISA: MIF Human ELISA Kit (ab100594)

MIF measured in cell culture supernatants from control or treated (PHA: 2 days in 2% PHA-M; LifeTechnologies) PBMCs. Samples tested in the range of 1/3-1/30 (duplicates, +/- SD).



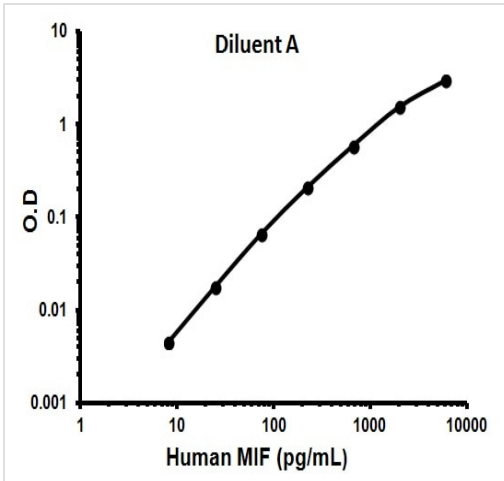
MIF in human biological fluids (duplicates +/- SD). Data shown from undiluted serum, plasma and urine, and milk diuted 1/100-1/500. Mouse serum gave 0.12 ng/mL (duplicates) and no signal was detected in mouse plasma.

ELISA: MIF Human ELISA Kit (ab100594)



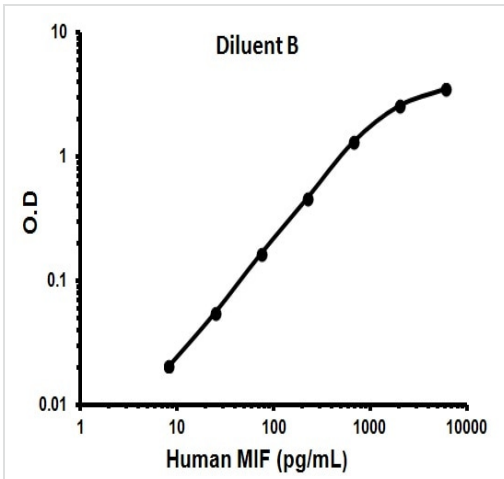
Standard curve in assay buffer B with background signal subtracted (duplicates; +/- SD).

ELISA: MIF Human ELISA Kit (ab100594)



Representative Standard Curve using ab100594.

Typical Standard Curve



Representative Standard Curve using ab100594.

Typical Standard Curve

Please note: All products are "FOR RESEARCH USE ONLY. NOT FOR USE IN DIAGNOSTIC PROCEDURES"

Our Abpromise to you: Quality guaranteed and expert technical support

- Replacement or refund for products not performing as stated on the datasheet
- Valid for 12 months from date of delivery

- Response to your inquiry within 24 hours
- We provide support in Chinese, English, French, German, Japanese and Spanish
- Extensive multi-media technical resources to help you
- We investigate all quality concerns to ensure our products perform to the highest standards

If the product does not perform as described on this datasheet, we will offer a refund or replacement. For full details of the Abpromise, please visit <https://www.abcam.cn/abpromise> or contact our technical team.

Terms and conditions

- Guarantee only valid for products bought direct from Abcam or one of our authorized distributors