

### Human Lumican ELISA Kit ab213809

#### 1 图像

#### 概述

**产品名称** 人Lumican ELISA试剂盒

**检测方法** Colorimetric

**精确度** 批次内

样品	n	Mean	SD	CV%
1	16	249pg/ml	23.03	= 6.6%
2	16	1777pg/ml	103.06	= 5.8%
3	16	5103pg/ml	372.51	= 7.3%

批次间

样品	n	Mean	SD	CV%
1	24	367pg/ml	24.58	= 6.7%
2	24	1619pg/ml	119.8	= 7.4%
3	24	4802pg/ml	403.36	= 8.4%

**样品类型** Cell culture supernatant, Serum, Hep Plasma

**检测类型** Sandwich (quantitative)

**灵敏度** < 10 pg/ml

**范围** 156 pg/ml - 10000 pg/ml

**检测时间** 3h 30m

**实验步骤** Multiple steps standard assay

**种属反应性** 与反应: Human

**产品概述** The Human Lumican Enzyme-Linked Immunosorbent Assay (ELISA) kit (ab213809) is designed for the quantitative detection of Human Lumican in cell culture supernatants, serum and plasma (heparin).

The ELISA kit is based on standard sandwich enzyme-linked immunosorbent assay technology. A

polyclonal antibody from goat specific for Lumican has been pre-coated onto 96-well plates. Standards (Expression system for standard: NSO; Immunogen sequence: Q19-N338) and test samples are added to the wells, a biotinylated detection polyclonal antibody from goat specific for Lumican is added subsequently and then followed by washing with PBS or TBS buffer. Avidin-Biotin-Peroxidase Complex was added and unbound conjugates were washed away with PBS or TBS buffer. HRP substrate TMB was used to visualize HRP enzymatic reaction. TMB was catalyzed by HRP to produce a blue color product that changed into yellow after adding acidic stop solution. The density of yellow is proportional to the Human Lumican amount of sample captured in plate.

**说明**

Lumican, also known as LUM, is a protein which in humans is encoded by the LUM gene. This gene is a member of the small interstitial proteoglycan gene (SIPG) family, and it is a keratan sulfate proteoglycan which presents large quantities in the corneal stroma and in interstitial collagenous matrices of the heart, aorta, skeletal muscle, skin and intervertebral discs. Lumican is mapped to 12q21.33. It interacts with collagen and limits growth of fibrils in diameter. In the cornea, Lumican not only interacts with collagen molecules to limit fibril growth, but also plays a critical role in the regular spacing of fibrils and acquisition of corneal transparency by virtue of its keratan sulfate-containing glycosaminoglycan side chains LDC.

**平台**

Pre-coated microplate (12 x 8 well strips)

**性能**

**存放说明**

Store at -20°C. Please refer to protocols.

组件	标识符	1 x 96 tests
ABC Diluent Buffer	Blue Cap	1 x 12ml
Adhesive Plate Seal		4 units
Antibody Diluent Buffer	Green Cap	1 x 12ml
Anti-Human Lumican coated Microplate (12 x 8 wells)		1 unit
Avidin-Biotin-Peroxidase Complex (ABC)		1 x 100µl
Biotinylated anti-Human Lumican antibody		1 x 100µl
Lyophilized recombinant Human Lumican standard		2 vials
Sample Diluent Buffer	Green Cap	1 x 30ml
TMB Color Developing Agent	Black Cap	1 x 10ml
TMB Stop Solution	Yellow Cap	1 x 10ml
Wash Buffer (25X)		1 x 20ml

**组织特异性**

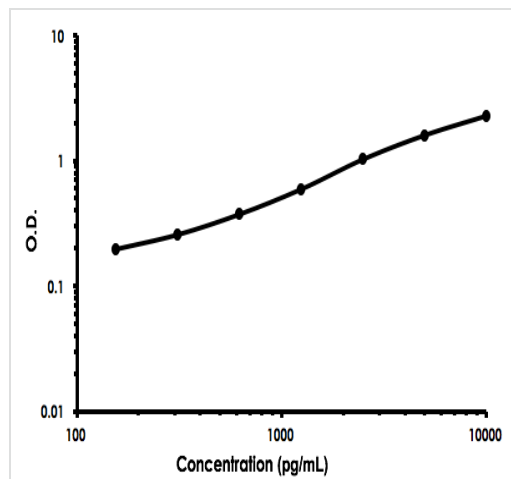
Cornea and other tissues.

**序列相似性**

Belongs to the small leucine-rich proteoglycan (SLRP) family. SLRP class II subfamily. Contains 11 LRR (leucine-rich) repeats. Contains 1 LRRNT domain.

发展阶段	Present in the extracellular matrix of human articular cartilage at all ages, although its abundance is far greater in the adult. In the adult cartilage lumican exists predominantly in a glycoprotein form lacking keratan sulfate, whereas the juvenile form of the molecule is a proteoglycan.
翻译后修饰	Sulfated on tyrosine residue(s).
细胞定位	Secreted > extracellular space > extracellular matrix.

## 图片



Human Lumican ELISA Kit (ab213809) Standard Curve

Human Lumican ELISA Kit (ab213809) Standard Curve

**Please note:** All products are "FOR RESEARCH USE ONLY. NOT FOR USE IN DIAGNOSTIC PROCEDURES"

## Our Abpromise to you: Quality guaranteed and expert technical support

- Replacement or refund for products not performing as stated on the datasheet
- Valid for 12 months from date of delivery
- Response to your inquiry within 24 hours
- We provide support in Chinese, English, French, German, Japanese and Spanish
- Extensive multi-media technical resources to help you
- We investigate all quality concerns to ensure our products perform to the highest standards

If the product does not perform as described on this datasheet, we will offer a refund or replacement. For full details of the Abpromise, please visit <https://www.abcam.cn/abpromise> or contact our technical team.

## Terms and conditions

- Guarantee only valid for products bought direct from Abcam or one of our authorized distributors