

Human Kallikrein 8 ELISA Kit ab213804

1 图像

概述

产品名称 人Kallikrein 8 ELISA试剂盒

检测方法 Colorimetric

精确度 批次内

样品	n	Mean	SD	CV%
1	16	1468pg/ml	67.53	4.6%
2	16	3882pg/ml	260.1	6.7%
3	16	6352pg/ml	349.4	5.5%

批次间

样品	n	Mean	SD	CV%
1	24	1625pg/ml	95.9	5.9%
2	24	4190pg/ml	301.7	7.2%
3	24	6526pg/ml	417.7	6.4%

样品类型 Cell culture supernatant, Serum, Cell Lysate, Hep Plasma, EDTA Plasma, Tissue Homogenate

检测类型 Sandwich (quantitative)

灵敏度 < 10 pg/ml

范围 156 pg/ml - 10000 pg/ml

检测时间 3h 30m

实验步骤 Multiple steps standard assay

种属反应性 与反应: Human

产品概述 The Human Kallikrein 8 (KLK8) Enzyme-Linked Immunosorbent Assay (ELISA) kit (ab213804) is designed for the quantitative measurement of Human Kallikrein-8 in cell culture supernatants, cell lysates, tissue homogenates, serum and plasma (heparin, EDTA).

The ELISA kit is based on standard sandwich enzyme-linked immune-sorbent assay technology.

A monoclonal antibody from mouse specific for Kallikrein-8 has been pre-coated onto 96-well plates. Standards and test samples are added to the wells, a biotinylated detection polyclonal antibody from goat specific for Kallikrein-8 is added subsequently and then followed by washing with PBS or TBS buffer. Avidin-Biotin-Peroxidase Complex is added and unbound conjugates are washed away with PBS or TBS buffer. HRP substrate TMB is used to visualize HRP enzymatic reaction. TMB is catalyzed by HRP to produce a blue color product that changed into yellow after adding acidic stop solution. The density of yellow is proportional to the Human Kallikrein-8 amount of sample captured in plate.

说明

Kallikrein-8 is a protein that in humans is encoded by the KLK8 gene. Kallikreins are a subgroup of serine proteases having diverse physiological functions. Growing evidence suggests that many kallikreins are implicated in carcinogenesis and some have potential as novel cancer and other disease biomarkers. This gene is one of the fifteen kallikrein subfamily members located in a cluster on chromosome 19. Alternate splicing of this gene results in four transcript variants encoding four different isoforms. The isoforms exhibit distinct patterns of expression that suggest roles in brain plasticity and ovarian cancer.

平台

Pre-coated microplate (12 x 8 well strips)

性能

存放说明

Store at -20°C. Please refer to protocols.

组件	标识符	1 x 96 tests
ABC Diluent Buffer	Blue Cap	1 x 12ml
Adhesive Plate Seal		4 units
Antibody Diluent Buffer	Green Cap	1 x 12ml
Anti-Human KLK8 coated Microplate (12 x 8 wells)		1 unit
Avidin-Biotin-Peroxidase Complex (ABC)		1 x 100µl
Biotinylated KLK8 Antibody		1 x 100µl
Human KLK8 Standard (Lyophilized)		2 vials
Sample Diluent Buffer	Green Cap	1 x 30ml
TMB Color Developing Agent	Black Cap	1 x 10ml
TMB Stop Solution	Yellow Cap	1 x 10ml
Wash Buffer (25X)		1 x 20ml

功能

Serine protease which is capable of degrading a number of proteins such as casein, fibrinogen, kininogen, fibronectin and collagen type IV. Also cleaves L1CAM in response to increased neural activity. Induces neurite outgrowth and fasciculation of cultured hippocampal neurons. Plays a role in the formation and maturation of orphan and small synaptic boutons in the Schaffer-collateral pathway, regulates Schaffer-collateral long-term potentiation in the hippocampus and is required for memory acquisition and synaptic plasticity. Involved in skin desquamation and keratinocyte

proliferation. Plays a role in the secondary phase of pathogenesis following spinal cord injury.

组织特异性

Isoform 1 is predominantly expressed in the pancreas. Isoform 2 is expressed in adult brain and hippocampus. Isoform 1 and isoform 2 are found in fetal brain and placenta. Detected in salivary gland, uterus, thymus, breast, testis and kidney but not in spleen, liver, lung or normal ovarian tissue. Displays an 11.5-fold increase in Alzheimer disease hippocampus compared to controls and is overexpressed in some ovarian carcinomas. Expressed at low levels in normal skin while high levels are found in psoriasis vulgaris, seborrheic keratosis, lichen planus and squamous cell carcinoma skin samples. Expressed in the keratinocytes.

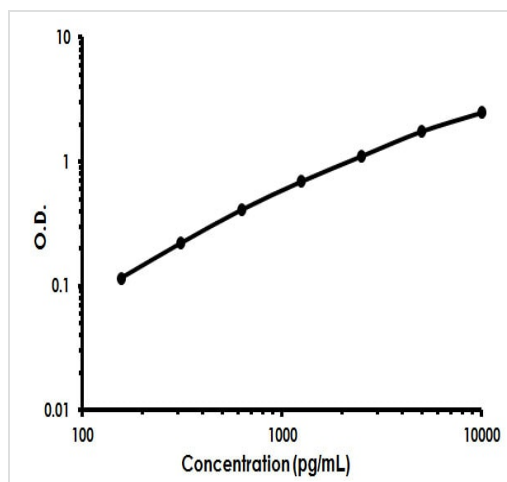
序列相似性

Belongs to the peptidase S1 family. Kallikrein subfamily.
Contains 1 peptidase S1 domain.

细胞定位

Secreted. Cytoplasm. Shows a cytoplasmic distribution in the keratinocytes.

图片



Human Kallikrein-8 ELISA Kit (ab213804) Standard Curve.

Human Kallikrein-8 ELISA Kit (ab213804) Standard Curve.

Please note: All products are "FOR RESEARCH USE ONLY. NOT FOR USE IN DIAGNOSTIC PROCEDURES"

Our Abpromise to you: Quality guaranteed and expert technical support

- Replacement or refund for products not performing as stated on the datasheet
- Valid for 12 months from date of delivery
- Response to your inquiry within 24 hours
- We provide support in Chinese, English, French, German, Japanese and Spanish
- Extensive multi-media technical resources to help you
- We investigate all quality concerns to ensure our products perform to the highest standards

If the product does not perform as described on this datasheet, we will offer a refund or replacement. For full details of the Abpromise, please visit <https://www.abcam.cn/abpromise> or contact our technical team.

Terms and conditions

- Guarantee only valid for products bought direct from Abcam or one of our authorized distributors