

Human IP-10 ELISA Kit ab173194

SimpleStep ELISA

★★★★★ [1 Abreviews](#) [11 References](#) [6 图像](#)

概述

产品名称	人IP-10 ELISA试剂盒				
检测方法	Colorimetric				
精确度	批次内				
	样品	n	Mean	SD	CV%
	PBMC media	9			5.1%
	批次间				
	样品	n	Mean	SD	CV%
	PBMC media	3			11.1%
样品类型	Cell culture supernatant, Serum, Hep Plasma, EDTA Plasma, Cit plasma				
检测类型	Sandwich (quantitative)				
灵敏度	2.6 pg/ml				
范围	12.5 pg/ml - 800 pg/ml				
回收率	特定样本回收率				
	样品类型	平均%		范围	
	Serum	103		102% - 105%	
	Cell culture media	96		95% - 98%	
	Hep Plasma	86		82% - 88%	
	EDTA Plasma	101		99% - 103%	
	Cit plasma	96		93% - 98%	
检测时间	1h 30m				
实验步骤	One step assay				

种属反应性

与反应: Human

产品概述

Human IP-10 (CXCL10) ELISA (ab173194) kit is a single-wash 90 min sandwich ELISA designed for the quantitative measurement of IP-10 protein in human serum and plasma samples. It uses our proprietary SimpleStep ELISA® technology. Quantitate human IP-10 with 1.4 pg/ml sensitivity.

SimpleStep ELISA® technology employs capture antibodies conjugated to an affinity tag that is recognized by the monoclonal antibody used to coat our SimpleStep ELISA® plates. This approach to sandwich ELISA allows the formation of the antibody-analyte sandwich complex in a single step, significantly reducing assay time. See the SimpleStep ELISA® protocol summary in the image section for further details. Our SimpleStep ELISA® technology provides several benefits:

- Single-wash protocol reduces assay time to 90 minutes or less
- High sensitivity, specificity and reproducibility from superior antibodies
- Fully validated in biological samples
- 96-wells plate breakable into 12 x 8 wells strips

A 384-well SimpleStep ELISA® microplate ([ab203359](#)) is available to use as an alternative to the 96-well microplate provided with SimpleStep ELISA® kits.

说明

C-X-C motif chemokine 10 (CXCL10 or IP-10) is a small 10.8kD protein that is secreted by several cell types in response to interferon-gamma (IFNγ). These cell types include monocytes, endothelial cells and fibroblasts. Upon secretion, CXCL10 is cleaved into an 8.7kD biologically active protein to function in chemotaxis for T-cells, NK cells, monocytes/macrophages and dendritic cells. In addition, CXCL10 has antitumor activity through the inhibition of bone marrow colony formation and angiogenesis. CXCL10 elicits its effects by binding to the cell surface chemokine receptor 3 (CXCR3).

Abcam has not and does not intend to apply for the REACH Authorisation of customers' uses of products that contain European Authorisation list (Annex XIV) substances. It is the responsibility of our customers to check the necessity of application of REACH Authorisation, and any other relevant authorisations, for their intended uses.

平台

Microplate

性能

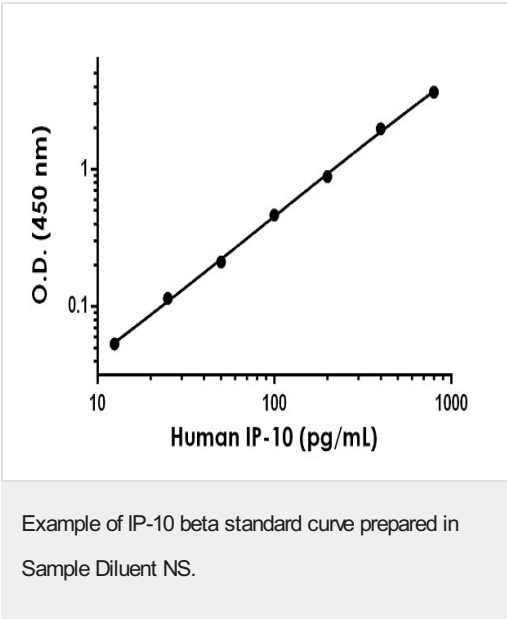
存放说明Store at +4°C. Please refer to protocols.

组件	1 x 96 tests	1 x 96 tests
10X Human IP-10 Capture Antibody	1 x 600µl	1 x 600µl
10X Human IP-10 Detector Antibody	1 x 600µl	1 x 600µl
10X Wash Buffer PT (ab206977)	1 x 20ml	1 x 20ml
Antibody Diluent CPI2	1 x 6ml	1 x 6ml
Human IP-10 Lyophilized Recombinant Protein	2 vials	2 vials

组件	1 x 96 tests	1 x 96 tests
Plate Seals	1 unit	1 unit
Sample Diluent NS (ab193972)	1 x 50ml	1 x 50ml
SimpleStep Pre-Coated 96-Well Microplate (ab206978)	1 unit	1 unit
Stop Solution	1 x 12ml	1 x 12ml
TMB Development Solution	1 x 12ml	1 x 12ml

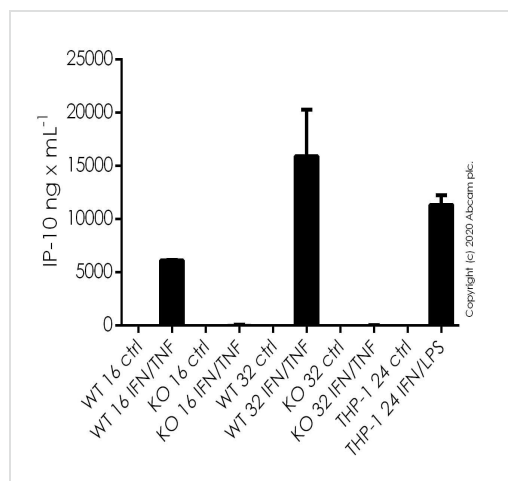
功能	Chemotactic for monocytes and T-lymphocytes. Binds to CXCR3.
序列相似性	Belongs to the intercrine alpha (chemokine CxC) family.
翻译后修饰	CXCL10(1-73) is produced by proteolytic cleavage after secretion from keratinocytes.
细胞定位	Secreted.

图片



Background-subtracted data values (mean +/- SD) are graphed.

Example of IP-10 beta standard curve prepared in Sample Diluent NS.

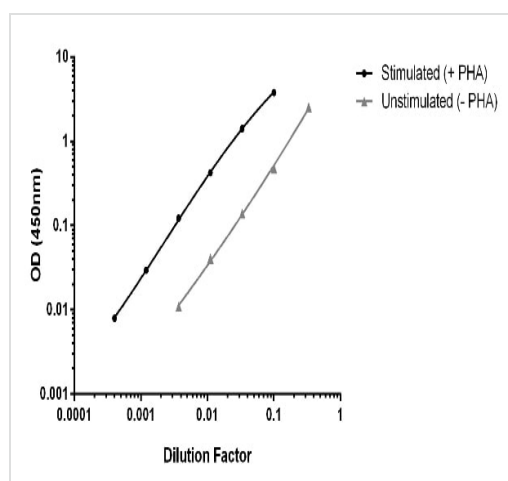


Human IP-10 ELISA kit (ab173194)

Wild-type A549 control cells or IP-10 knockout A549 cells (**ab266969**), grown to 40% confluency, were stimulated with Recombinant Human Interferon gamma protein (**ab259377**) at 100 ng/ml and Recombinant human TNF alpha protein (**ab259410**) at 10 ng/ml or vehicle control for 16 or 32 hours.

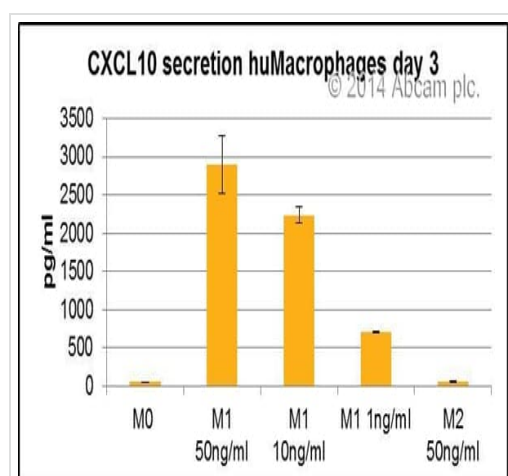
THP-1 cells, grown to 40% confluency, were stimulated with Recombinant Human Interferon gamma protein (**ab259377**) at 200 ng/ml and LPS at 50 ng/mL or vehicle control for 24 hours.

The concentrations of IP-10 (CXCL10) in cell culture supernatants were measured in duplicate and interpolated from the IP-10 standard curves. IP-10 from vehicle control samples were measured in undiluted supernatants and the treated samples were diluted 200 times. The interpolated dilution factor corrected values are plotted (mean +/- SD, n=2).



Typical ELISA data

Titration of PBMC conditioned media (+/- PHA) within the working range of the assay. Background subtracted data from triplicate measurements are plotted.

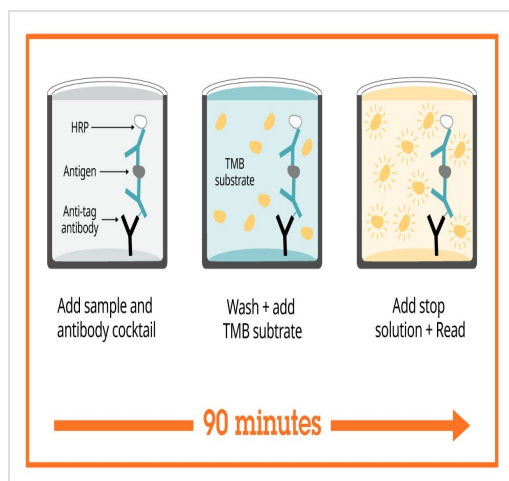


Sandwich ELISA _ IP-10 (CXCL10) Human

SimpleStep ELISA™ Kit (ab173194)

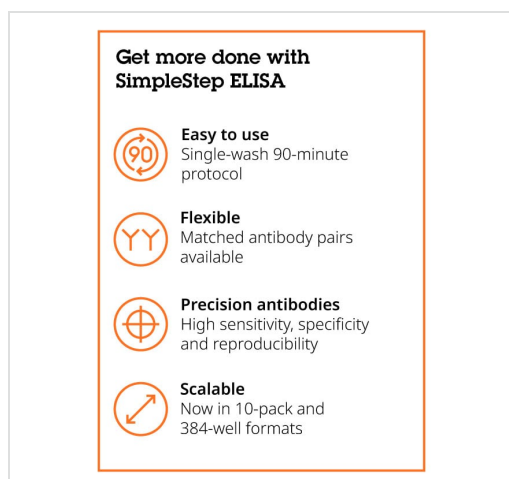
This image is courtesy of an anonymous Abreview

Data shows specific secretion of IP-10 (CXCL10) by human macrophages differentiated in culture for 3 days in a dose response to M1 (MCSF + IFNg).



Sandwich ELISA - Human IP-10 ELISA Kit
(ab173194)

SimpleStep ELISA technology allows the formation of the antibody-antigen complex in one single step, reducing assay time to 90 minutes. Add samples or standards and antibody mix to wells all at once, incubate, wash, and add your final substrate. See protocol for a detailed step-by-step guide.



Sandwich ELISA - Human IP-10 ELISA Kit
(ab173194)

To learn more about the advantages of SimpleStep ELISA® kits see [here](#).

Please note: All products are "FOR RESEARCH USE ONLY. NOT FOR USE IN DIAGNOSTIC PROCEDURES"

Our Abpromise to you: Quality guaranteed and expert technical support

- Replacement or refund for products not performing as stated on the datasheet
- Valid for 12 months from date of delivery
- Response to your inquiry within 24 hours
- We provide support in Chinese, English, French, German, Japanese and Spanish
- Extensive multi-media technical resources to help you
- We investigate all quality concerns to ensure our products perform to the highest standards

If the product does not perform as described on this datasheet, we will offer a refund or replacement. For full details of the Abpromise, please visit <https://www.abcam.cn/abpromise> or contact our technical team.

Terms and conditions

- Guarantee only valid for products bought direct from Abcam or one of our authorized distributors