

Human IL-6 ELISA Kit ab46027

[76 References](#) [5 图像](#)

概述

产品名称 人IL-6 ELISA试剂盒

检测方法 Colorimetric

精确度 批次内

样品	n	Mean	SD	CV%
Pooled sampl	15			4.2%

批次间

样品	n	Mean	SD	CV%
Sample 1	18	200pg/ml	16	8.1%
Sample 2	18	77pg/ml	8	10.1%
Sample 3	18	63pg/ml	6	8.6%
Sample 4	18	103pg/ml	6	6%
Sample 5	18	53pg/ml	3	5.5%

样品类型 Cell culture supernatant, Serum, Plasma

检测类型 Sandwich (quantitative)

灵敏度 < 2 pg/ml

范围 6.25 pg/ml - 200 pg/ml

回收率 96 %

检测时间 1h 45m

实验步骤 Multiple steps standard assay

种属反应性 与反应: Human

产品概述 Abcam's IL-6 Human *in vitro* ELISA (Enzyme-Linked Immunosorbent Assay) kit is designed for the quantitative measurement of IL-6 in Human serum, plasma, buffered solutions or supernatants.

A monoclonal antibody specific for IL-6 has been coated onto the wells of the microtiter strips

provided. Samples, including standards of known IL-6 concentrations, control specimens or unknowns are pipetted into these wells. During the first incubation, the standards or samples and a biotinylated monoclonal antibody specific for IL-6 are simultaneously incubated. After washing, the enzyme Streptavidin-HRP, that binds the biotinylated antibody is added, incubated and washed. A TMB substrate solution is added which acts on the bound enzyme to induce a colored reaction product. The intensity of this colored product is directly proportional to the concentration of IL-6 present in the samples.

This kit will recognize both endogenous and recombinant Human IL-6.

Get higher sensitivity in only 90 minutes with Human IL-6 ELISA Kit ([ab178013](#)) from our SimpleStep ELISA® range.

平台 Microplate

性能

存放说明 Store at +4°C. Please refer to protocols.

组件	标识符	2 x 96 tests	1 x 96 tests	1 x 96 tests	2 x 96 tests
10X Standard Diluent Buffer	Black	1 x 25ml	1 x 15ml	1 x 15ml	1 x 25ml
200X Wash Buffer	White	2 x 10ml	1 x 10ml	1 x 10ml	2 x 10ml
Adhesive plate seal		1 x 4 units	1 x 2 units	1 x 2 units	1 x 4 units
Biotinylated Antibody Diluent	Red	1 x 13ml	1 x 7.5ml	1 x 7.5ml	1 x 13ml
Biotinylated anti-IL-6	Red	2 x 0.4ml	1 x 0.4ml	1 x 0.4ml	2 x 0.4ml
Chromogen TMB Substrate Solution		1 x 24ml	1 x 11ml	1 x 11ml	1 x 24ml
HRP Diluent	Red	1 x 23ml	1 x 12ml	1 x 12ml	1 x 23ml
IL-6 Control	Yellow	4 vials	2 vials	2 vials	4 vials
IL-6 Microplate (12 x 8 well strips)		2 units	1 unit	1 unit	2 units
IL-6 Standard (Lyophilized)	Orange	4 vials	2 vials	2 vials	4 vials
Standard Diluent (Serum)		2 x 7ml	1 x 7ml	1 x 7ml	2 x 7ml
Stop Reagent	Black	2 x 11ml	1 x 11ml	1 x 11ml	2 x 11ml
Streptavidin-HRP		4 x 5µl	2 x 5µl	2 x 5µl	4 x 5µl

功能 Cytokine with a wide variety of biological functions. It is a potent inducer of the acute phase response. Plays an essential role in the final differentiation of B-cells into Ig-secreting cells. Involved in lymphocyte and monocyte differentiation. It induces myeloma and plasmacytoma growth and induces nerve cells differentiation. Acts on B-cells, T-cells, hepatocytes, hematopoietic progenitor cells and cells of the CNS. Also acts as a myokine. It is discharged into the

bloodstream after muscle contraction and acts to increase the breakdown of fats and to improve insulin resistance.

疾病相关

Genetic variations in IL6 are associated with susceptibility to rheumatoid arthritis systemic juvenile (RASJ) [MIM:604302]. An inflammatory articular disorder with systemic-onset beginning before the age of 16. It represents a subgroup of juvenile arthritis associated with severe extraarticular features and occasionally fatal complications. During active phases of the disorder, patients display a typical daily spiking fever, an evanescent macular rash, lymphadenopathy, hepatosplenomegaly, serositis, myalgia and arthritis.

Note=A IL6 promoter polymorphism is associated with a lifetime risk of development of Kaposi sarcoma in HIV-infected men.

序列相似性

Belongs to the IL-6 superfamily.

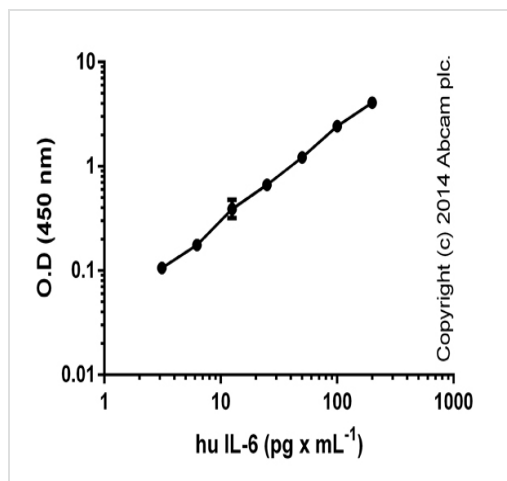
翻译后修饰

N- and O-glycosylated.

细胞定位

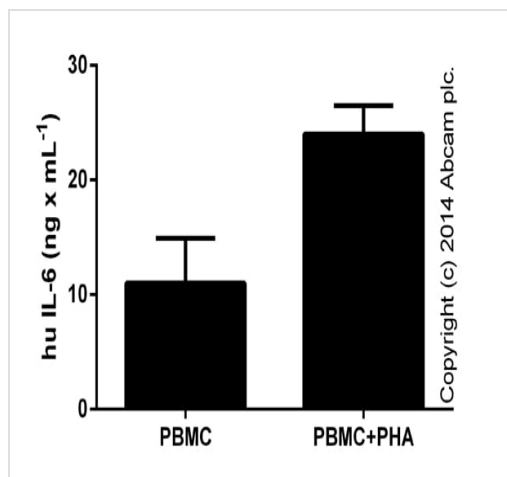
Secreted.

图片



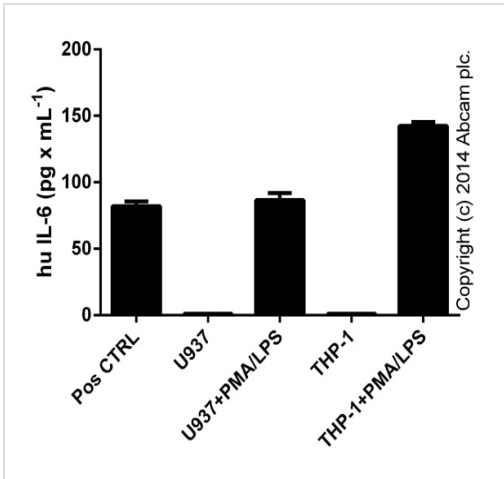
Standard curve of human IL-6 with background signal subtracted (duplicates; +/- SD).

ELISA: IL-6 Human ELISA Kit (ab46027)



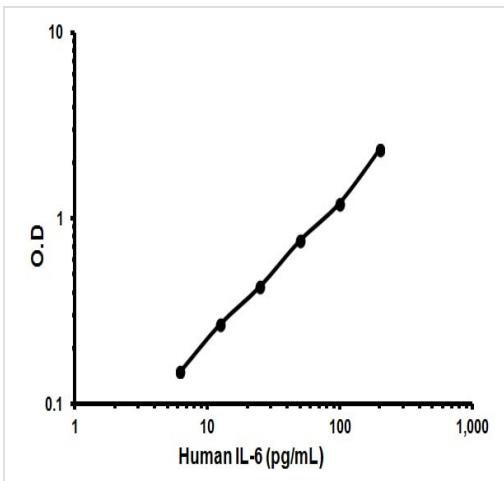
IL-6 measured in cell culture supernatants (diluted 1/50-1/1250) from control or treated (48 hours with 2% PHA-M; LifeTechnologies) PBMCs (duplicates +/- SD).

ELISA: IL-6 Human ELISA Kit (ab46027)



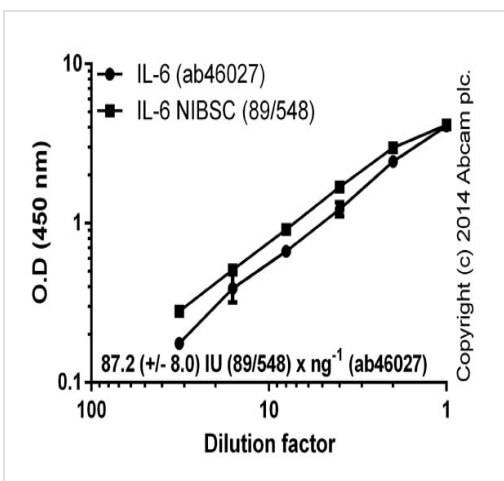
ELISA: IL-6 Human ELISA Kit (ab46027)

IL-6 detected in positive control (Pos CTRL; ab46027), and in supernatants (diluted 1/1-1/5) from control cells or cells stimulated for 24 hours with 50 nanogram x mL⁻¹ of PMA (**ab120297**) with 1 microgram x mL⁻¹ of LPS (Sigma) for the last 6 hours (PMA/LPS).



Typical Standard Curve

Representative Standard Curve using ab46027



ELISA: IL-6 Human ELISA Kit (ab46027)

Dilution curves of human IL-6 (ab46027) and NIBSC standard (89/548). One ng of standard IL-6 corresponds to 87.2 (+/- 8.0) IU NIBSC standard. Background signal subtracted (duplicates; +/- SD).

Please note: All products are "FOR RESEARCH USE ONLY. NOT FOR USE IN DIAGNOSTIC PROCEDURES"

Our Abpromise to you: Quality guaranteed and expert technical support

- Replacement or refund for products not performing as stated on the datasheet
- Valid for 12 months from date of delivery
- Response to your inquiry within 24 hours

- We provide support in Chinese, English, French, German, Japanese and Spanish
- Extensive multi-media technical resources to help you
- We investigate all quality concerns to ensure our products perform to the highest standards

If the product does not perform as described on this datasheet, we will offer a refund or replacement. For full details of the Abpromise, please visit <https://www.abcam.cn/abpromise> or contact our technical team.

Terms and conditions

- Guarantee only valid for products bought direct from Abcam or one of our authorized distributors