

Human IL-10 ELISA Kit ab100549

18 References 6 图像

概述												
产品名称	人IL-10 ELISA试剂盒											
检测方法	Colorimetric											
精确度	批次内											
	<table><tr><th>样品</th><th>n</th><th>Mean</th><th>SD</th><th>CV%</th></tr><tr><td>Overall</td><td></td><td></td><td></td><td>< 10%</td></tr></table>	样品	n	Mean	SD	CV%	Overall				< 10%	
	样品	n	Mean	SD	CV%							
Overall				< 10%								
批次间												
	<table><tr><th>样品</th><th>n</th><th>Mean</th><th>SD</th><th>CV%</th></tr><tr><td>Overall</td><td></td><td></td><td></td><td>< 12%</td></tr></table>	样品	n	Mean	SD	CV%	Overall				< 12%	
样品	n	Mean	SD	CV%								
Overall				< 12%								
样品类型	Cell culture supernatant, Serum, Plasma											
检测类型	Sandwich (quantitative)											
灵敏度	< 1 pg/ml											
范围	2.34 pg/ml - 150 pg/ml											
回收率	100 %											
	特定样本回收率											
	<table><tr><th>样品类型</th><th>平均%</th><th>范围</th></tr><tr><td>Cell culture supernatant</td><td>98.37</td><td>87% - 110%</td></tr><tr><td>Serum</td><td>101.94</td><td>87% - 108%</td></tr><tr><td>Plasma</td><td>102.39</td><td>93% - 109%</td></tr></table>	样品类型	平均%	范围	Cell culture supernatant	98.37	87% - 110%	Serum	101.94	87% - 108%	Plasma	102.39
样品类型	平均%	范围										
Cell culture supernatant	98.37	87% - 110%										
Serum	101.94	87% - 108%										
Plasma	102.39	93% - 109%										
实验步骤	Multiple steps standard assay											
种属反应性	与反应: Human											
产品概述	Abcam's IL-10 Human ELISA (Enzyme-Linked Immunosorbent Assay) kit is an <i>in vitro</i> enzyme-linked immunosorbent assay for the quantitative measurement of Human IL-10 in serum, plasma and cell culture supernatants.											

This assay employs an antibody specific for Human IL-10 coated on a 96-well plate. Standards and samples are pipetted into the wells and IL-10 present in a sample is bound to the wells by the immobilized antibody. The wells are washed and biotinylated anti-Human IL-10 antibody is added. After washing away unbound biotinylated antibody, HRP-conjugated streptavidin is pipetted to the wells. The wells are again washed, a TMB substrate solution is added to the wells and color develops in proportion to the amount of IL-10 bound. The Stop Solution changes the color from blue to yellow, and the intensity of the color is measured at 450 nm.

Get results in 90 minutes with Human IL-10 ELISA Kit ([ab185986](#)) from our SimpleStep ELISA® range.

Produced using a non-baculovirus expression system.

说明 Optimization may be required with urine samples

平台 Microplate

性能

存放说明 Store at -20°C. Please refer to protocols.

组件	1 x 96 tests
200X HRP-Streptavidin Concentrate	1 x 200µl
20X Wash Buffer	1 x 25ml
5X Assay Diluent B	1 x 15ml
Assay Diluent A	1 x 30ml
Biotinylated anti-Human IL-10	2 vials
IL-10 Microplate (12 x 8 wells)	1 unit
Recombinant Human IL-10 Standard (lyophilized)	2 vials
Stop Solution	1 x 8ml
TMB One-Step Substrate Reagent	1 x 12ml

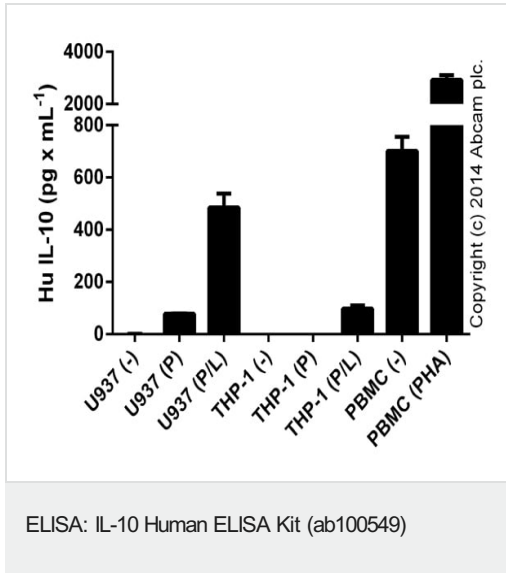
功能 Inhibits the synthesis of a number of cytokines, including IFN-gamma, IL-2, IL-3, TNF and GM-CSF produced by activated macrophages and by helper T-cells.

组织特异性 Produced by a variety of cell lines, including T-cells, macrophages, mast cells and other cell types.

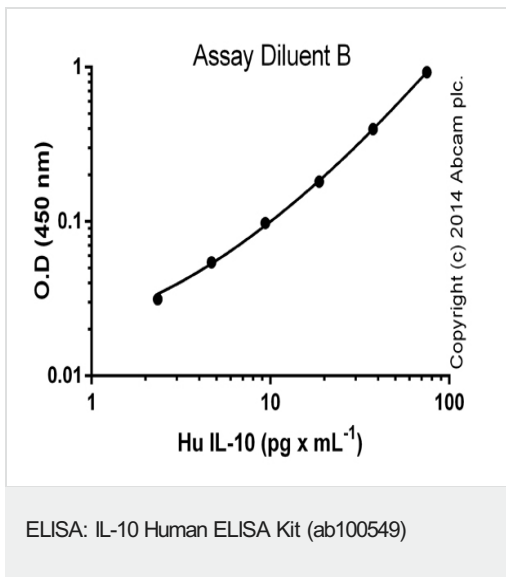
序列相似性 Belongs to the IL-10 family.

细胞定位 Secreted.

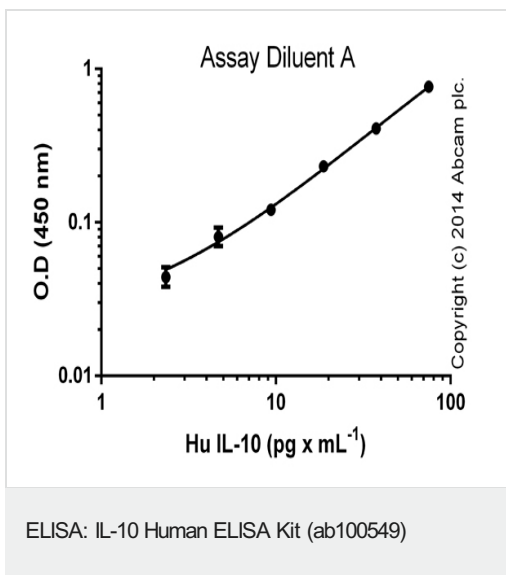
图片



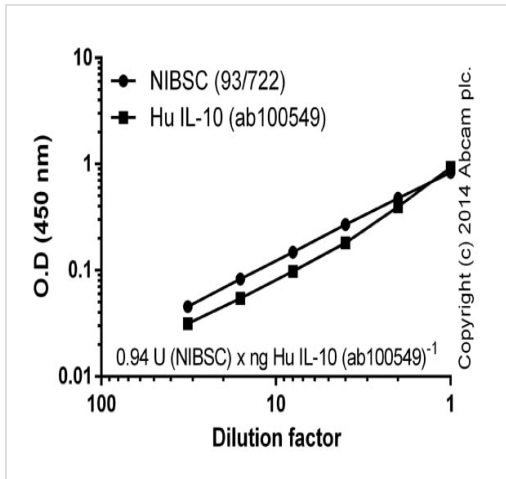
IL-10 measured in culture supernatants from control (-) or activated cell lines (dilution range 1/1-1/100), stimulated for 24 hours with 50 ng x mL⁻¹ of PMA (P)([ab120297](#)) and with the addition of 1 ug x mL⁻¹ of LPS (Sigma) (P/L) for the last 6 hours or in PBMC supernatants (dilution range 1/10-1/1000), from control or treated cells ((PHA) 48 hours with 2% PHA-M; LifeTechnologies) (duplicates +/- SD).



Standard curve (assay diluent B) with background signal subtracted (duplicates; +/- SD).

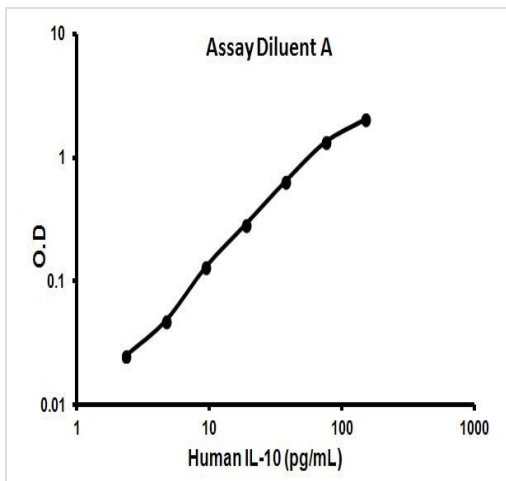


Standard curve (assay diluent A) with background signal subtracted (duplicates; +/- SD).



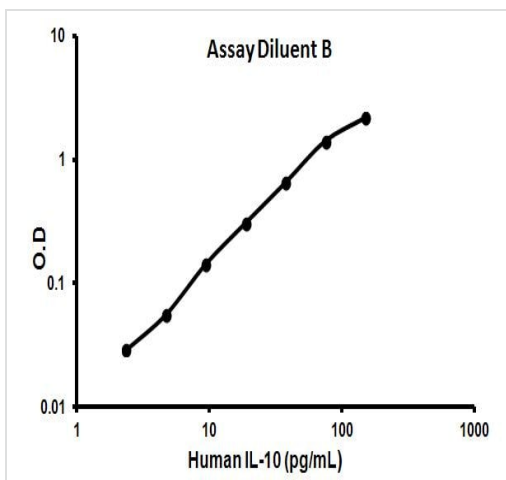
ELISA: IL-10 Human ELISA Kit (ab100549)

Dilution curves (in assay diluent B) of human IL-10 (ab100549) and NIBSC standard (93/722). One ng of standard IL-10 corresponds to 0.94 (+/- 0.08) U NIBSC standard. Background signal subtracted (duplicates; +/- SD).



Representative standard curve using ab100549

Typical Standard Curve



Representative standard curve using ab100549

Typical Standard Curve

Please note: All products are "FOR RESEARCH USE ONLY. NOT FOR USE IN DIAGNOSTIC PROCEDURES"

Our Abpromise to you: Quality guaranteed and expert technical support

- Replacement or refund for products not performing as stated on the datasheet
- Valid for 12 months from date of delivery
- Response to your inquiry within 24 hours

- We provide support in Chinese, English, French, German, Japanese and Spanish
- Extensive multi-media technical resources to help you
- We investigate all quality concerns to ensure our products perform to the highest standards

If the product does not perform as described on this datasheet, we will offer a refund or replacement. For full details of the Abpromise, please visit <https://www.abcam.cn/abpromise> or contact our technical team.

Terms and conditions

- Guarantee only valid for products bought direct from Abcam or one of our authorized distributors