

### Human Hemopexin ELISA Kit (HPX) ab108860

[2 References](#) [2 图像](#)

#### 概述

**产品名称** 人Hemopexin ELISA试剂盒(HPX)

**检测方法** Colorimetric

**精确度** 批次内

样品	n	Mean	SD	CV%
Overall				5.3%

批次间

样品	n	Mean	SD	CV%
Overall				9.5%

**样品类型** Cell culture supernatant, Saliva, Milk, Urine, Cerebral Spinal Fluid

**检测类型** Sandwich (quantitative)

**灵敏度** = 1.3 ng/ml

**范围** 12.5 ng/ml - 200 ng/ml

**回收率** 98 %

**检测时间** 3h 30m

**实验步骤** Multiple steps standard assay

**种属反应性** 与反应: Human

**产品概述** Abcam's Hemopexin (HPX) Human *in vitro* ELISA (Enzyme-Linked Immunosorbent Assay) kit is designed for the quantitative measurement of Hemopexin levels in Human cell culture supernatants, milk, saliva and urine.

A Hemopexin specific antibody has been precoated onto 96-well plates and blocked. Standards or test samples are added to the wells and subsequently a Hemopexin specific biotinylated detection antibody is added and then followed by washing with wash buffer. Streptavidin-Peroxidase Conjugate is added and unbound conjugates are washed away with wash buffer. TMB is then used to visualize Streptavidin-Peroxidase enzymatic reaction. TMB is catalyzed by Streptavidin-Peroxidase to produce a blue color product that changes into yellow after adding acidic stop solution. The density of yellow coloration is directly proportional to the amount of Hemopexin captured in plate.

The entire kit may be stored at -20°C for long term storage before reconstitution - Avoid repeated freeze-thaw cycles.

平台 Microplate

## 性能

存放说明 Store at -20°C. Please refer to protocols.

组件	1 x 96 tests
100X Streptavidin-Peroxidase Conjugate	1 x 80µl
10X Diluent N Concentrate	1 x 30ml
20X Wash Buffer Concentrate	2 x 30ml
50X Biotinylated Human Hemopexin Antibody	1 x 120µl
Chromogen Substrate	1 x 7ml
Hemopexin Microplate (12 x 8 well strips)	1 unit
Hemopexin Standard	1 vial
Sealing Tapes	3 units
Stop Solution	1 x 11ml

**功能** Binds heme and transports it to the liver for breakdown and iron recovery, after which the free hemopexin returns to the circulation.

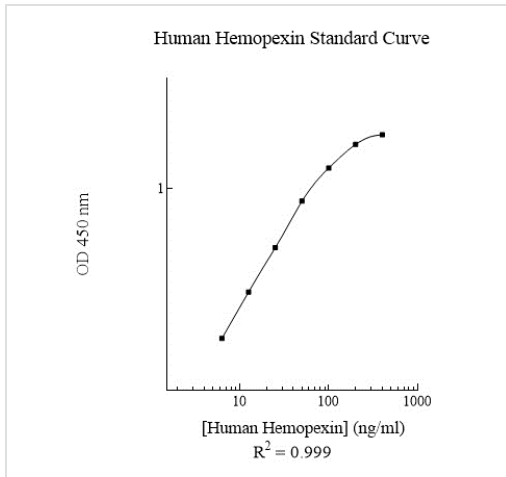
**组织特异性** Expressed by the liver and secreted in plasma.

**序列相似性** Belongs to the hemopexin family.  
Contains 5 hemopexin-like domains.

**翻译后修饰** N- and O-glycosylated. O-glycosylated with core 1 or possibly core 8 glycans.

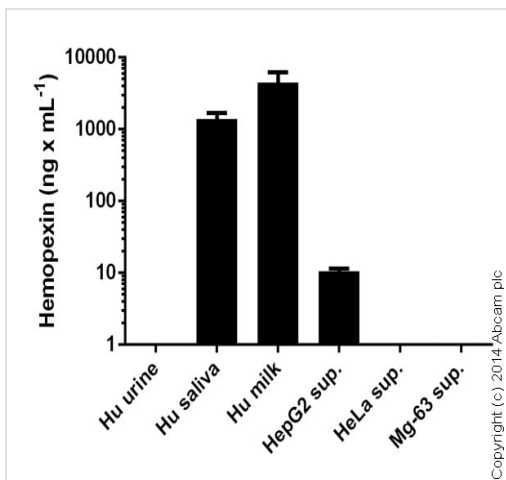
**细胞定位** Secreted.

## 图片



Representative Standard Curve using ab108860.

Typical Standard Curve



Hemopexin measured in biological fluids and cell culture supernatants showing quantity (ng) per mL of tested sample. Human saliva diluted 60-120 fold. Human milk diluted 300-600 fold. Human urine diluted 10 fold - below detection. Cell supernatants tested neat.

Sandwich ELISA - Hemopexin (HPX) Human ELISA Kit (ab108860)

**Please note:** All products are "FOR RESEARCH USE ONLY. NOT FOR USE IN DIAGNOSTIC PROCEDURES"

### Our Abpromise to you: Quality guaranteed and expert technical support

- Replacement or refund for products not performing as stated on the datasheet
- Valid for 12 months from date of delivery
- Response to your inquiry within 24 hours

- We provide support in Chinese, English, French, German, Japanese and Spanish
- Extensive multi-media technical resources to help you
- We investigate all quality concerns to ensure our products perform to the highest standards

If the product does not perform as described on this datasheet, we will offer a refund or replacement. For full details of the Abpromise, please visit <https://www.abcam.cn/abpromise> or contact our technical team.

### **Terms and conditions**

---

- Guarantee only valid for products bought direct from Abcam or one of our authorized distributors