

Human Haptoglobin ELISA Kit ab108856

11 References 2 图像

概述

产品名称	人Haptoglobin ELISA试剂盒				
检测方法	Colorimetric				
精确度	批次内				
	样品	n	Mean	SD	CV%
	Overall				6.1%
	批次间				
	样品	n	Mean	SD	CV%
	Overall				10.54%
样品类型	Serum, Plasma				
检测类型	Competitive				
灵敏度	= 57 ng/ml				
范围	0.078 µg/ml - 20 µg/ml				
回收率	= 90 %				
检测时间	2h 00m				
实验步骤	Multiple steps standard assay				
种属反应性	与反应: Human				
产品概述	Human Haptoglobin <i>in vitro</i> competitive ELISA (Enzyme-Linked Immunosorbent Assay) kit is				

A Haptoglobin specific antibody has been precoated onto 96-well plates and blocked. Standards or test samples are added to the wells and subsequently biotinylated Haptoglobin is added and then followed by washing with wash buffer. Streptavidin-Peroxidase Complex is added and unbound conjugates are washed away with wash buffer. TMB is then used to visualize Streptavidin-Peroxidase enzymatic reaction. TMB is catalyzed by Streptavidin-Peroxidase to produce a blue color product that changes into yellow after adding acidic stop solution. The density of yellow coloration is inversely proportional to the amount of Haptoglobin captured in plate.

The entire kit may be stored at -20°C for long term storage before reconstitution - Avoid repeated freeze-thaw cycles.

平台 Microplate

性能

存放说明 Store at -20°C. Please refer to protocols.

组件	1 x 96 tests
100X Streptavidin-Peroxidase Conjugate	1 x 80µl
10X Diluent N Concentrate	1 x 30ml
1X Biotinylated Human Haptoglobin (Lyophilized)	1 vial
20X Wash Buffer Concentrate	1 x 30ml
Chromogen Substrate	1 x 7ml
Haptoglobin Microplate (12 x 8 well strips)	1 unit
Haptoglobin Standard	1 vial
Sealing Tapes	3 units
Stop Solution	1 x 11ml

功能 As a result of hemolysis, hemoglobin is found to accumulate in the kidney and is secreted in the urine. Haptoglobin captures, and combines with free plasma hemoglobin to allow hepatic recycling of heme iron and to prevent kidney damage. Haptoglobin also acts as an Antimicrobial; Antioxidant, has antibacterial activity and plays a role in modulating many aspects of the acute phase response. Hemoglobin/haptoglobin complexes are rapidly cleared by the macrophage CD163 scavenger receptor expressed on the surface of liver Kupfer cells through an endocytic lysosomal degradation pathway.

Uncleaved haptoglobin, also known as zonulin, plays a role in intestinal permeability, allowing intercellular tight junction disassembly, and controlling the equilibrium between tolerance and immunity to non-self antigens.

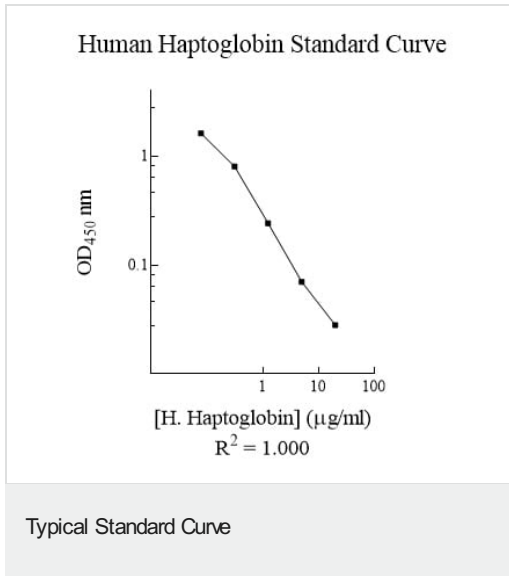
组织特异性 Expressed by the liver and secreted in plasma.

疾病相关 Anhaptoglobinemia

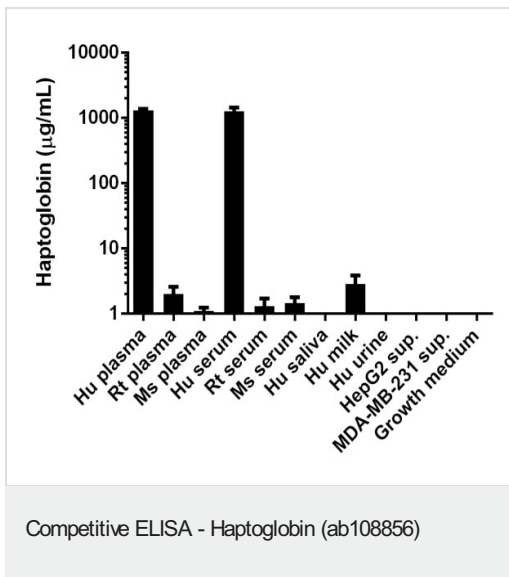
序列相似性 Belongs to the peptidase S1 family.
Contains 1 peptidase S1 domain.
Contains 2 Sushi (CCP/SCR) domains.

细胞定位 Secreted.

图片



Representative Standard Curve using ab108856.



Haptoglobin measured in various biological fluids showing quantity (µg) per mL of sample tested

Please note: All products are "FOR RESEARCH USE ONLY. NOT FOR USE IN DIAGNOSTIC PROCEDURES"

Our Abpromise to you: Quality guaranteed and expert technical support

- Replacement or refund for products not performing as stated on the datasheet
- Valid for 12 months from date of delivery
- Response to your inquiry within 24 hours
- We provide support in Chinese, English, French, German, Japanese and Spanish
- Extensive multi-media technical resources to help you
- We investigate all quality concerns to ensure our products perform to the highest standards

If the product does not perform as described on this datasheet, we will offer a refund or replacement. For full details of the Abpromise, please visit <https://www.abcam.cn/abpromise> or contact our technical team.

Terms and conditions

- Guarantee only valid for products bought direct from Abcam or one of our authorized distributors