

Human gamma-synuclein ELISA Kit ab224884

重组 SimpleStep ELISA

9 图像

概述

产品名称 人gamma-synuclein ELISA试剂盒

检测方法 Colorimetric

精确度 批次内

样品	n	Mean	SD	CV%
Serum	8			6.1%

批次间

样品	n	Mean	SD	CV%
Serum	3			14%

样品类型 Urine, Serum, Hep Plasma, EDTA Plasma, Cit plasma

检测类型 Sandwich (quantitative)

灵敏度 5.15 pg/ml

范围 7.81 pg/ml - 500 pg/ml

回收率 特定样本回收率

样品类型	平均%	范围
Urine	107	100% - 114%
Serum	100	90% - 105%
Hep Plasma	89	83% - 92%
EDTA Plasma	73	66% - 77%
Cit plasma	79	75% - 84%

检测时间 1h 30m

实验步骤 One step assay

种属反应性

与反应: Human

产品概述

Human gamma-synuclein ELISA Kit (ab224884) is a single-wash 90 min sandwich ELISA designed for the quantitative measurement of gamma-synuclein protein in cit plasma, edta plasma, hep plasma, serum, and urine. It uses our proprietary SimpleStep ELISA® technology. Quantitate Human gamma-synuclein with 5.15 pg/ml sensitivity.

SimpleStep ELISA® technology employs capture antibodies conjugated to an affinity tag that is recognized by the monoclonal antibody used to coat our SimpleStep ELISA® plates. This approach to sandwich ELISA allows the formation of the antibody-analyte sandwich complex in a single step, significantly reducing assay time. See the SimpleStep ELISA® protocol summary in the image section for further details. Our SimpleStep ELISA® technology provides several benefits:

- Single-wash protocol reduces assay time to 90 minutes or less
- High sensitivity, specificity and reproducibility from superior antibodies
- Fully validated in biological samples
- 96-wells plate breakable into 12 x 8 wells strips

A 384-well SimpleStep ELISA® microplate ([ab203359](#)) is available to use as an alternative to the 96-well microplate provided with SimpleStep ELISA® kits.

说明

Human gamma-synuclein plays a role in neurofilament network integrity. May be involved in modulating axonal architecture during development and in the adult. In vitro, increases the susceptibility of neurofilament-H to calcium-dependent proteases (By similarity). May also function in modulating the keratin network in skin. Activates the MAPK and Elk-1 signal transduction pathway.

Abcam has not and does not intend to apply for the REACH Authorisation of customers' uses of products that contain European Authorisation list (Annex XIV) substances.

It is the responsibility of our customers to check the necessity of application of REACH Authorisation, and any other relevant authorisations, for their intended uses.

平台

Pre-coated microplate (12 x 8 well strips)

性能

存放说明

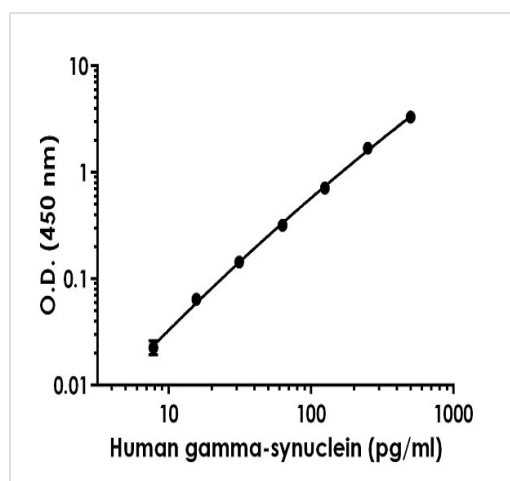
Store at +4°C. Please refer to protocols.

组件	1 x 96 tests
10X Wash Buffer PT (ab206977)	1 x 20ml
50X Cell Extraction Enhancer Solution (ab193971)	1 x 1ml
5X Cell Extraction Buffer PTR (ab193970)	1 x 10ml
Antibody Diluent 4BR	1 x 6ml
10X Human gamma-synuclein Capture Antibody	1 x 600µl
10X Human gamma-synuclein Detector Antibody	1 x 600µl

组件	1 x 96 tests
Human gamma-synuclein Lyophilized Recombinant Protein	2 vials
Plate Seals	1 unit
Sample Diluent NS (ab193972)	1 x 50ml
SimpleStep Pre-Coated 96-Well Microplate (ab206978)	1 unit
Stop Solution	1 x 12ml
TMB Development Solution	1 x 12ml

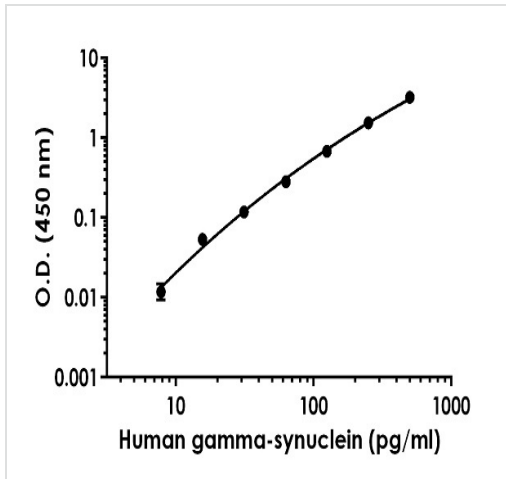
功能	Plays a role in neurofilament network integrity. May be involved in modulating axonal architecture during development and in the adult. In vitro, increases the susceptibility of neurofilament-H to calcium-dependent proteases (By similarity). May also function in modulating the keratin network in skin. Activates the MAPK and Elk-1 signal transduction pathway.
组织特异性	Highly expressed in brain, particularly in the substantia nigra. Also expressed in the corpus callosum, heart, skeletal muscle, ovary, testis, colon and spleen. Weak expression in pancreas, kidney and lung.
序列相似性	Belongs to the synuclein family.
翻译后修饰	Phosphorylated. Phosphorylation by GRK5 appears to occur on residues distinct from the residue phosphorylated by other kinases.
细胞定位	Cytoplasm > perinuclear region. Cytoplasm > cytoskeleton > centrosome. Cytoplasm > cytoskeleton > spindle. Associated with centrosomes in several interphase cells. In mitotic cells, localized to the poles of the spindle.

图片



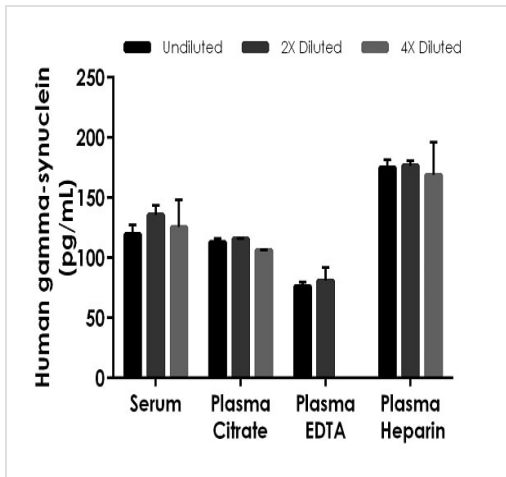
The gamma-synuclein standard curve was prepared as described in Section 10. Raw data values are shown in the table. Background-subtracted data values (mean +/- SD) are graphed.

Example of human gamma-synuclein standard curve in Sample Diluent NS



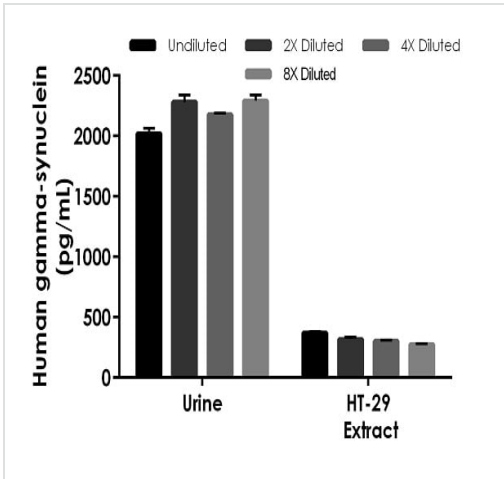
Example of human gamma-synuclein standard curve in Sample Diluent PTR

The gamma-synuclein standard curve was prepared as described in Section 10. Raw data values are shown in the table. Background-subtracted data values (mean +/- SD) are graphed.



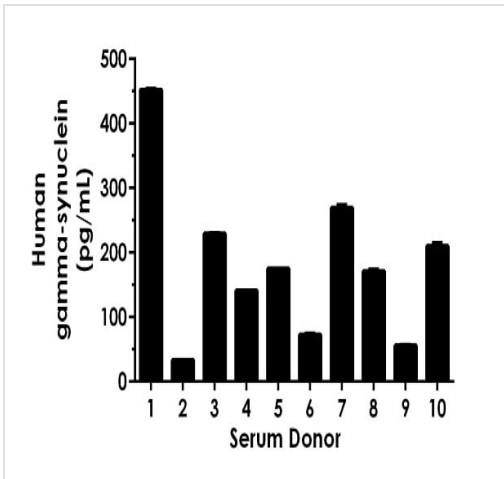
Interpolated concentrations of native gamma-synuclein in human serum and plasma samples

The concentrations of gamma-synuclein were measured in duplicate, interpolated from the gamma-synuclein standard curves and corrected for sample dilution. Undiluted samples are as follows: serum 25%, plasma (citrate) 25%, plasma (EDTA) 25%, plasma (heparin) 25%. The interpolated dilution factor corrected values are plotted (mean +/- SD, n=2). The mean gamma-synuclein concentration was determined to be 126.89 pg/mL in serum, 114.40 pg/mL in plasma (citrate), 78.63 pg/mL in plasma (EDTA) and 173.43 pg/ml in plasma (heparin).



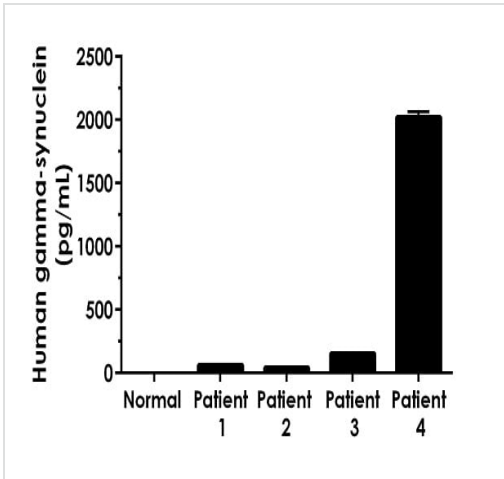
Interpolated concentrations of native gamma-synuclein in human urine (from a bladder cancer patient) and cell culture extract based on a 5 µg/mL load

The concentrations of gamma-synuclein were measured in duplicate and interpolated from the gamma-synuclein standard curve and corrected for sample dilution. The interpolated dilution factor corrected values are plotted (mean +/- SD, n=2). The mean gamma-synuclein concentration was determined to be 2193.46 pg/mL in bladder cancer urine, 316.85 pg/ml in HT-29 cell extract.



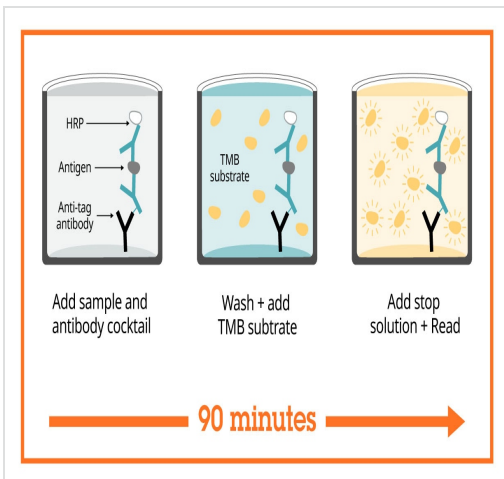
Serum from ten individual healthy human female donors was measured in duplicate

Interpolated dilution factor corrected values are plotted (mean +/- SD, n=2). The mean gamma-synuclein concentration was determined to be 180.4 pg/mL with a range of 32.92 - 451.67 pg/mL.



Urine from pooled normal human and four individual bladder cancer patients (male: n=3; female: n=1) human donors was measured in duplicate

Interpolated dilution factor corrected values are plotted (mean +/- SD, n=2). The mean gamma-synuclein concentration was determined to be 569.88 pg/mL with a range of 40.46 – 2021.56 pg/ml. The native concentration of gamma-synuclein was below the level of detection in urine from healthy human donors.



SimpleStep ELISA technology allows the formation of the antibody-antigen complex in one single step, reducing assay time to 90 minutes. Add samples or standards and antibody mix to wells all at once, incubate, wash, and add your final substrate. See protocol for a detailed step-by-step guide.

Sandwich ELISA - Human gamma-synuclein ELISA Kit (ab224884)

Powered by recombinant antibodies

- Research with confidence**
Consistent and reproducible results
- Long-term and scalable supply**
Recombinant technology
- Success from the first experiment**
Confirmed specificity
- Ethical standards compliant**
Animal-free production

To learn more about the advantages of recombinant antibodies see [here](#).

Sandwich ELISA - Human gamma-synuclein ELISA Kit (ab224884)

Get more done with SimpleStep ELISA



Easy to use
Single-wash 90-minute protocol



Flexible
Matched antibody pairs available



Precision antibodies
High sensitivity, specificity and reproducibility



Scalable
Now in 10-pack and 384-well formats

To learn more about the advantages of SimpleStep ELISA® kits see [here](#).

Sandwich ELISA - Human gamma-synuclein ELISA
Kit (ab224884)

Please note: All products are "FOR RESEARCH USE ONLY. NOT FOR USE IN DIAGNOSTIC PROCEDURES"

Our Abpromise to you: Quality guaranteed and expert technical support

- Replacement or refund for products not performing as stated on the datasheet
- Valid for 12 months from date of delivery
- Response to your inquiry within 24 hours
- We provide support in Chinese, English, French, German, Japanese and Spanish
- Extensive multi-media technical resources to help you
- We investigate all quality concerns to ensure our products perform to the highest standards

If the product does not perform as described on this datasheet, we will offer a refund or replacement. For full details of the Abpromise, please visit <https://www.abcam.cn/abpromise> or contact our technical team.

Terms and conditions

- Guarantee only valid for products bought direct from Abcam or one of our authorized distributors