

Human EGFR ELISA Kit (pY1068) ab126438

3 图像

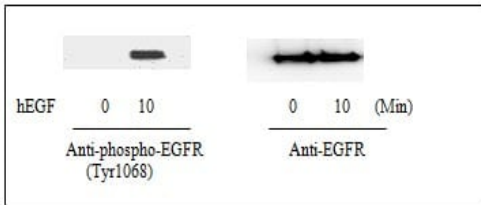
概述	
产品名称	人EGFR ELISA试剂盒(pY1068)
检测方法	Colorimetric
样品类型	Cell Lysate
检测类型	Semi-quantitative
检测时间	5h 00m
实验步骤	Multiple steps standard assay
种属反应性	与反应: Human
产品概述	<p>Human EGFR ELISA Kit (pY1068) (ab126438) is a very rapid, convenient and sensitive assay kit that can monitor the activation or function of important biological pathways in cell lysates. By determining phosphorylated EGFR protein in your experimental model system, you can verify pathway activation in your cell lysates. You can simultaneously measure numerous different cell lysates without spending excess time and effort in performing a Western Blot analysis.</p> <p>This Sandwich ELISA kit is an in vitro enzyme-linked immunosorbent assay for the measurement of human phospho-EGFR (pY1068). An anti-EGFR antibody has been coated onto a 96-well plate. Samples are pipetted into the wells and phosphorylated and unphosphorylated EGFR present in a sample is bound to the wells by the immobilized antibody. The wells are washed and anti-phosphorylated EGFR (pY1068) antibodies are used to detect phosphorylated EGFR. After washing away unbound antibody, HRP-conjugated anti-Rabbit IgG (secondary antibody) is pipetted to the wells. The wells are again washed, a TMB substrate solution is added to the wells and color develops in proportion to the amount of EGFR (pY1068) bound. The Stop Solution changes the color from blue to yellow, and the intensity of the color is measured at 450 nm.</p>
说明	<p>Abcam has not and does not intend to apply for the REACH Authorisation of customers' uses of products that contain European Authorisation list (Annex XIV) substances.</p> <p>It is the responsibility of our customers to check the necessity of application of REACH Authorisation, and any other relevant authorisations, for their intended uses.</p>
平台	Microplate
性能	
存放说明	Store at -20°C. Please refer to protocols.

组 件	1 x 96 tests
20X Wash Buffer	1 x 25ml
2X Cell Lysis Buffer	1 x 5ml
500X HRP-conjugated anti-rabbit IgG	1 x 25µl
5X Assay Diluent	1 x 15ml
Anti-phospho EGFR (Y1068)	2 x 6µl
EGFR Microplate (12 strips x 8 wells) coated with monoclonal anti-EGFR antibody	1 unit
Positive Control: lyophilized powder from A431 cell lysate	1 vial
Stop Solution	1 x 8ml
TMB One-Step Substrate Reagent	1 x 12ml

<b>功能</b>	<p>Receptor tyrosine kinase binding ligands of the EGF family and activating several signaling cascades to convert extracellular cues into appropriate cellular responses. Known ligands include EGF, TGFA/TGF-alpha, amphiregulin, epigen/EPGN, BTC/betacellulin, epiregulin/EREG and HBEGF/heparin-binding EGF. Ligand binding triggers receptor homo- and/or heterodimerization and autophosphorylation on key cytoplasmic residues. The phosphorylated receptor recruits adapter proteins like GRB2 which in turn activates complex downstream signaling cascades. Activates at least 4 major downstream signaling cascades including the RAS-RAF-MEK-ERK, PI3 kinase-AKT, PLCgamma-PKC and STATs modules. May also activate the NF-kappa-B signaling cascade. Also directly phosphorylates other proteins like RGS16, activating its GTPase activity and probably coupling the EGF receptor signaling to the G protein-coupled receptor signaling. Also phosphorylates MUC1 and increases its interaction with SRC and CTNNB1/beta-catenin.</p> <p>Isoform 2 may act as an antagonist of EGF action.</p>
<b>组织特异性</b>	Ubiquitously expressed. Isoform 2 is also expressed in ovarian cancers.
<b>疾病相关</b>	<p>Lung cancer</p> <p>Inflammatory skin and bowel disease, neonatal, 2</p>
<b>序列相似性</b>	<p>Belongs to the protein kinase superfamily. Tyr protein kinase family. EGF receptor subfamily.</p> <p>Contains 1 protein kinase domain.</p>
<b>翻译后修饰</b>	<p>Phosphorylation at Ser-695 is partial and occurs only if Thr-693 is phosphorylated.</p> <p>Phosphorylation at Thr-678 and Thr-693 by PRKD1 inhibits EGF-induced MAPK8/JNK1 activation. Dephosphorylation by PTPRJ prevents endocytosis and stabilizes the receptor at the plasma membrane. Autophosphorylation at Tyr-1197 is stimulated by methylation at Arg-1199 and enhances interaction with PTPN6. Autophosphorylation at Tyr-1092 and/or Tyr-1110 recruits STAT3. Dephosphorylated by PTPN1 and PTPN2.</p> <p>Monoubiquitinated and polyubiquitinated upon EGF stimulation; which does not affect tyrosine kinase activity or signaling capacity but may play a role in lysosomal targeting. Polyubiquitin linkage is mainly through 'Lys-63', but linkage through 'Lys-48', 'Lys-11' and 'Lys-29' also occurs. Deubiquitination by OTUD7B prevents degradation. Ubiquitinated by RNF115 and RNF126. Methylated. Methylation at Arg-1199 by PRMT5 stimulates phosphorylation at Tyr-1197.</p>
<b>细胞定位</b>	Secreted and Cell membrane. Endoplasmic reticulum membrane. Golgi apparatus membrane.

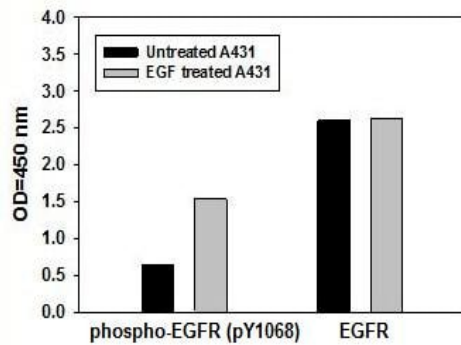
Nucleus membrane. Endosome. Endosome membrane. Nucleus. In response to EGF, translocated from the cell membrane to the nucleus via Golgi and ER. Endocytosed upon activation by ligand. Colocalized with GPER1 in the nucleus of estrogen agonist-induced cancer-associated fibroblasts (CAF).

## 图片



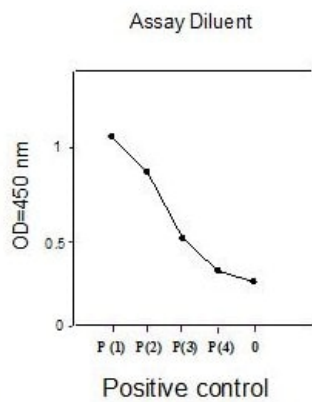
Western blot - EGFR (pY1068) Human ELISA Kit (ab126438)

A431 cells were treated or untreated with 100 ng/ml recombinant human EGF for 10 min. Cell lysates were analyzed using Western Blot.



Sandwich ELISA - EGFR (pY1068) Human ELISA Kit (ab126438)

A431 cells were treated or untreated with 100 ng/ml recombinant human EGF for 10 min. Cell lysates were analyzed using ab126438.



Sandwich ELISA - EGFR (pY1068) Human ELISA Kit (ab126438)

A431 cells were treated with recombinant human EGF at 37°C for 10 min. Cells were solubilized at  $4 \times 10^7$  cells/ml in Lysis Buffer. Serial dilutions of lysates were analyzed using ab126438.

**Please note:** All products are "FOR RESEARCH USE ONLY. NOT FOR USE IN DIAGNOSTIC PROCEDURES"

### **Our Abpromise to you: Quality guaranteed and expert technical support**

---

- Replacement or refund for products not performing as stated on the datasheet
- Valid for 12 months from date of delivery
- Response to your inquiry within 24 hours
  
- We provide support in Chinese, English, French, German, Japanese and Spanish
- Extensive multi-media technical resources to help you
- We investigate all quality concerns to ensure our products perform to the highest standards

If the product does not perform as described on this datasheet, we will offer a refund or replacement. For full details of the Abpromise, please visit <https://www.abcam.cn/abpromise> or contact our technical team.

### **Terms and conditions**

---

- Guarantee only valid for products bought direct from Abcam or one of our authorized distributors