

### Human Complement C6 ELISA Kit ab125965

#### 3 图像

#### 概述

**产品名称** 人Complement C6 ELISA试剂盒

**检测方法** Colorimetric

**精确度** 批次内

样品	n	Mean	SD	CV%
Overall				4.7%

批次间

样品	n	Mean	SD	CV%
Overall				8.9%

**样品类型** Cell culture supernatant, Saliva, Milk, Urine, Serum, Plasma, Cerebral Spinal Fluid

**检测类型** Sandwich (quantitative)

**灵敏度** 0.14 ng/ml

**范围** 0.391 ng/ml - 25 ng/ml

**回收率** 101 %

**检测时间** 4h 00m

**实验步骤** Multiple steps standard assay

**种属反应性** 与反应: Human

**产品概述** Abcam's Complement C6 Human *in vitro* ELISA (Enzyme-Linked Immunosorbent Assay) kit is designed for the quantitative measurement of C6 in Human plasma, serum, saliva, urine, milk, and cell culture supernatants.

A Complement C6 specific antibody has been precoated onto 96-well plates and blocked. Standards or test samples are added to the wells and subsequently a Complement C6 specific biotinylated detection antibody is added and then followed by washing with wash buffer. Streptavidin-Peroxidase Conjugate is added and unbound conjugates are washed away with wash buffer. TMB is then used to visualize Streptavidin-Peroxidase enzymatic reaction. TMB is catalyzed by Streptavidin-Peroxidase to produce a blue color product that changes into yellow after adding acidic stop solution. The density of yellow coloration is directly proportional to the amount of Complement C6 captured in plate.

The entire kit may be stored at -20°C for long term storage before reconstitution - Avoid repeated freeze-thaw cycles.

平台 Microplate

## 性能

存放说明 Store at -20°C. Please refer to protocols.

组件	1 x 96 tests
100X Streptavidin-Peroxidase Conjugate	1 x 80µl
10X Diluent N Concentrate	1 x 30ml
20X Wash Buffer Concentrate	2 x 30ml
50X Biotinylated Human Complement C6 Antibody	1 x 120µl
Chromogen Substrate	1 x 7ml
Complement C6 Microplate (12 x 8 well strips)	1 unit
Complement C6 Standard	1 vial
Sealing Tapes	3 units
Stop Solution	1 x 11ml

**功能** Constituent of the membrane attack complex (MAC) that plays a key role in the innate and adaptive immune response by forming pores in the plasma membrane of target cells.

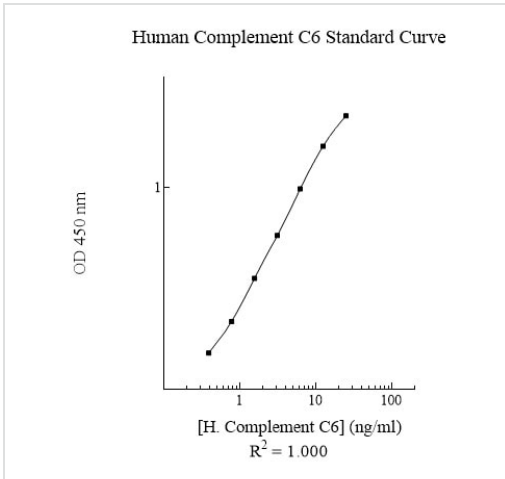
**疾病相关** Defects in C6 are the cause of complement component 6 deficiency (C6D) [MIM:612446]. A rare defect of the complement classical pathway associated with susceptibility to severe recurrent infections, predominantly by *Neisseria gonorrhoeae* or *Neisseria meningitidis*.

**序列相似性** Belongs to the complement C6/C7/C8/C9 family.  
Contains 1 EGF-like domain.  
Contains 2 Kazal-like domains.  
Contains 1 LDL-receptor class A domain.  
Contains 1 MACPF domain.  
Contains 2 Sushi (CCP/SCR) domains.  
Contains 3 TSP type-1 domains.

**翻译后修饰** All cysteine residues are assumed to be cross-linked to one another. Individual modules containing an even number of conserved cysteine residues are supposed to have disulfide linkages only within the same module.

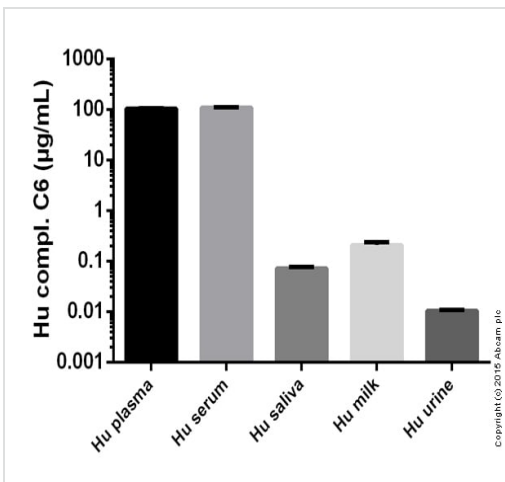
**细胞定位** Secreted.

## 图片



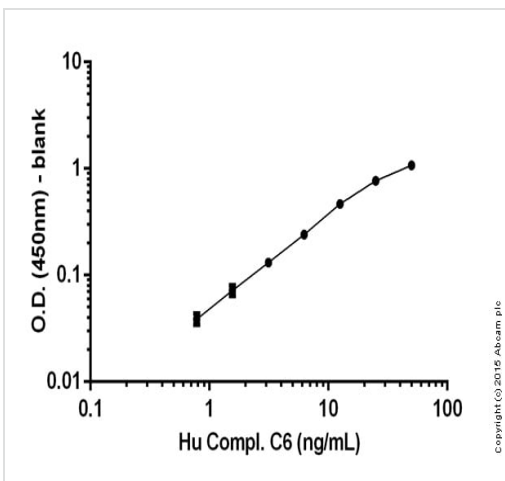
Human Complement C6 typical standard curve

Representative Standard Curve using ab125965.



Complement C6 measured in various biofluids showing quantity (microgram) per mL of sample tested

125965 Complement C6 Human ELISA Kit (AssayPro)



Colorimetric standard curve: mean of duplicates (+/-) with background readings subtracted

125965 Complement C6 Human ELISA Kit (AssayPro)

## **Our Abpromise to you: Quality guaranteed and expert technical support**

---

- Replacement or refund for products not performing as stated on the datasheet
- Valid for 12 months from date of delivery
- Response to your inquiry within 24 hours
  
- We provide support in Chinese, English, French, German, Japanese and Spanish
- Extensive multi-media technical resources to help you
- We investigate all quality concerns to ensure our products perform to the highest standards

If the product does not perform as described on this datasheet, we will offer a refund or replacement. For full details of the Abpromise, please visit <https://www.abcam.cn/abpromise> or contact our technical team.

## **Terms and conditions**

---

- Guarantee only valid for products bought direct from Abcam or one of our authorized distributors