

# Human Cathepsin B ELISA Kit ab119584

**8 References**   [3 图像](#)

### 概述

产品名称	人Cathepsin B ELISA试剂盒
检测方法	Colorimetric
样品类型	Cell culture supernatant, Serum, Plasma, Other biological fluids, Tissue Extracts, Cell Lysate
检测类型	Sandwich (quantitative)
灵敏度	< 5 pg/ml
范围	156 pg/ml - 10000 pg/ml
实验步骤	Multiple steps standard assay
种属反应性	<b>与反应:</b> Human
产品概述	<p>Abcam's Human Cathepsin B <i>in vitro</i> ELISA (Enzyme-Linked Immunosorbent Assay) kit is designed for the accurate quantitative measurement of Human Cathepsin B in cell culture supernatants, serum and plasma (heparin, EDTA).</p> <p>A Cathepsin B specific goat polyclonal antibody has been precoated onto 96-well plates. Standards and test samples are added to the wells and incubated. A biotinylated detection polyclonal antibody from goat, specific for Cathepsin B is then added followed by washing with PBS or TBS buffer. Avidin-Biotin-Peroxidase Complex is added and unbound conjugates are washed away with PBS or TBS buffer. TMB is then used to visualize the HRP enzymatic reaction. TMB is catalyzed by HRP to produce a blue color product that changes into yellow after adding acidic stop solution. The density of yellow coloration is directly proportional to the Human Cathepsin B amount of sample captured in plate.</p>
平台	Microplate

### 性能

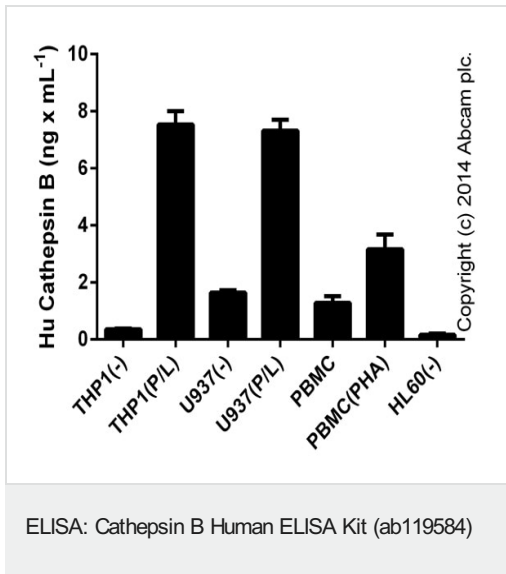
**存放说明**                      Store at -20°C. Please refer to protocols.

组件	标识符	1 x 96 tests	1 x 96 tests
ABC Diluent Buffer	Blue Cap	1 x 12ml	1 x 12ml
Antibody Diluent Buffer	Green Cap	1 x 12ml	1 x 12ml

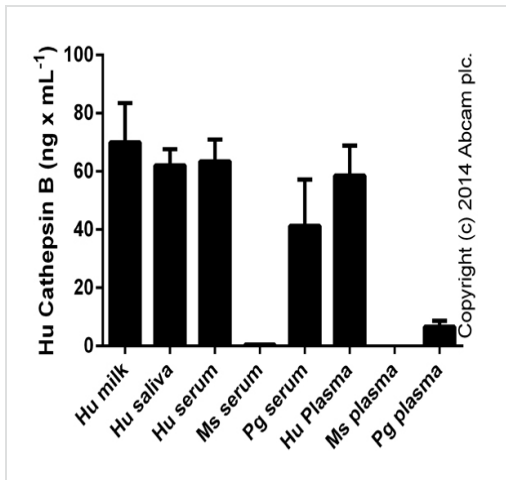
组件	标识符	1 x 96 tests	1 x 96 tests
Anti-Human Cathepsin B antibody Microplate (12 x 8 wells)		1 unit	1 unit
Avidin-Biotin-Peroxidase Complex (ABC)		1 x 100µl	1 x 100µl
Biotinylated anti-Human Cathepsin B antibody		1 x 100µl	1 x 100µl
Lyophilized recombinant Human Cathepsin B standard		2 x 10ng	2 x 10ng
Plate Seal		1 x 4 units	1 x 4 units
Sample Diluent Buffer	Green Cap	1 x 30ml	1 x 30ml
TMB Color Developing Agent	Amber Bottle	1 x 10ml	1 x 10ml
TMB Stop Solution	Yellow Cap	1 x 10ml	1 x 10ml
Wash Buffer (25X)		1 x 20ml	1 x 20ml

<b>功能</b>	Thiol protease which is believed to participate in intracellular degradation and turnover of proteins. Has also been implicated in tumor invasion and metastasis.
<b>序列相似性</b>	Belongs to the peptidase C1 family.
<b>细胞定位</b>	Lysosome. Melanosome. Identified by mass spectrometry in melanosome fractions from stage I to stage IV.

**图片**

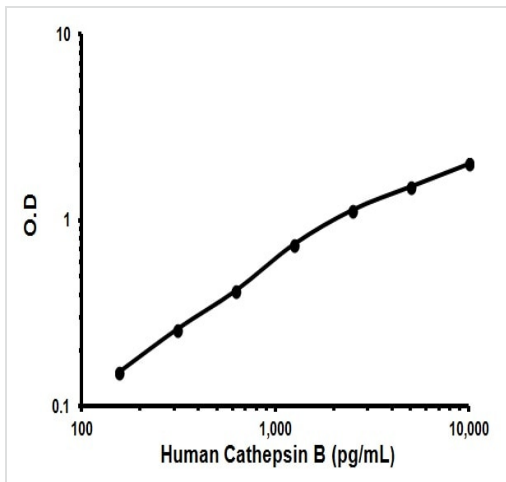


Cathepsin B measured in culture supernatants from control (-) or stimulated cells (P/L: 24 hours with 50 ng x mL<sup>-1</sup> of PMA (**ab120297**) with 1 ug x mL<sup>-1</sup> of LPS (Sigma) for the last 6 hours; PHA: 48 hours with 2% PHA-M; LifeTechnologies). Data shown represents duplicates (+/- SD), samples tested in the dilution range of 1/1-1/20.



Cathepsin B measured in biological fluids (tested in the range of 1/10-1/1000; duplicates +/- SD).

ELISA: Cathepsin B Human ELISA Kit (ab119584)



Representative Standard Curve Using ab119584.

Typical Standard Curve

**Please note:** All products are "FOR RESEARCH USE ONLY. NOT FOR USE IN DIAGNOSTIC PROCEDURES"

### Our Promise to you: Quality guaranteed and expert technical support

- Replacement or refund for products not performing as stated on the datasheet
- Valid for 12 months from date of delivery
- Response to your inquiry within 24 hours
- We provide support in Chinese, English, French, German, Japanese and Spanish
- Extensive multi-media technical resources to help you
- We investigate all quality concerns to ensure our products perform to the highest standards

If the product does not perform as described on this datasheet, we will offer a refund or replacement. For full details of the Abpromise, please visit <https://www.abcam.cn/abpromise> or contact our technical team.

## Terms and conditions

---

- Guarantee only valid for products bought direct from Abcam or one of our authorized distributors