

Human C Reactive Protein ELISA Kit (PTX1) ab108826

1 References 1 图像

概述

产品名称	人C Reactive蛋白ELISA试剂盒(PTX1)																				
检测方法	Colorimetric																				
精确度	<div>批次内<table><tr><th>样品</th><th>n</th><th>Mean</th><th>SD</th><th>CV%</th></tr><tr><td>Overall</td><td></td><td></td><td></td><td>4%</td></tr></table><div>批次间<table><tr><th>样品</th><th>n</th><th>Mean</th><th>SD</th><th>CV%</th></tr><tr><td>Overall</td><td></td><td></td><td></td><td>11.3%</td></tr></table></div></div>	样品	n	Mean	SD	CV%	Overall				4%	样品	n	Mean	SD	CV%	Overall				11.3%
样品	n	Mean	SD	CV%																	
Overall				4%																	
样品	n	Mean	SD	CV%																	
Overall				11.3%																	
样品类型	Cell culture supernatant, Saliva, Milk, Urine, Serum, Plasma, Cerebral Spinal Fluid																				
检测类型	Sandwich (quantitative)																				
灵敏度	= 0.2 ng/ml																				
范围	0.25 ng/ml - 16 ng/ml																				
回收率	96 %																				
检测时间	4h 00m																				
实验步骤	Multiple steps standard assay																				
种属反应性	与反应: Human																				
产品概述	Abcam's C Reactive Protein (PTX1) Human <i>in vitro</i> ELISA (Enzyme-Linked Immunosorbent Assay) kit is designed for the quantitative measurement of C Reactive Protein concentrations in Human plasma, serum, saliva, milk, urine and cell culture supernatants.																				

Get results in 90 minutes with Human C Reactive Protein ELISA Kit ([ab181416](#)) from our SimpleStep ELISA® range.

The entire kit may be stored at -20°C for long term storage before reconstitution - Avoid repeated freeze-thaw cycles.

平台 Microplate

性能

存放说明 Store at -20°C. Please refer to protocols.

组件	1 x 96 tests
100X Streptavidin-Peroxidase Conjugate	1 x 80µl
10X Diluent N Concentrate	1 x 30ml
20X Wash Buffer Concentrate	2 x 30ml
50X Biotinylated Human C Reactive Protein Antibody	1 x 120µl
C Reactive Protein Microplate (12 x 8 well strips)	1 unit
C Reactive Protein Standard	1 vial
Chromogen Substrate	1 x 8ml
Sealing Tapes	3 units
Stop Solution	1 x 12ml

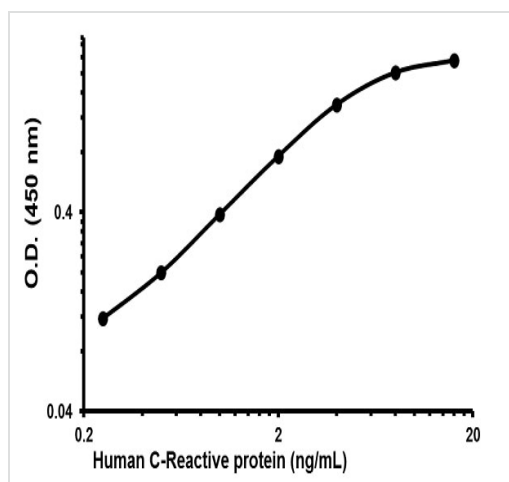
功能 Displays several functions associated with host defense: it promotes agglutination, bacterial capsular swelling, phagocytosis and complement fixation through its calcium-dependent binding to phosphorylcholine. Can interact with DNA and histones and may scavenge nuclear material released from damaged circulating cells.

组织特异性 Found in plasma.

序列相似性 Belongs to the pentaxin family.
Contains 1 pentaxin domain.

细胞定位 Secreted.

图片



Representative Standard Curve using ab108826

Typical Standard Curve

Please note: All products are "FOR RESEARCH USE ONLY. NOT FOR USE IN DIAGNOSTIC PROCEDURES"

Our Abpromise to you: Quality guaranteed and expert technical support

- Replacement or refund for products not performing as stated on the datasheet
- Valid for 12 months from date of delivery
- Response to your inquiry within 24 hours
- We provide support in Chinese, English, French, German, Japanese and Spanish
- Extensive multi-media technical resources to help you
- We investigate all quality concerns to ensure our products perform to the highest standards

If the product does not perform as described on this datasheet, we will offer a refund or replacement. For full details of the Abpromise, please visit <https://www.abcam.cn/abpromise> or contact our technical team.

Terms and conditions

- Guarantee only valid for products bought direct from Abcam or one of our authorized distributors