

Human BMP5 ELISA Kit ab119583

1 References 1 图像

概述

产品名称	人BMP5 ELISA试剂盒				
检测方法	Colorimetric				
精确度	批次内				
	样品	n	Mean	SD	CV%
	1	16	242pg/ml	16.45	= 6.8%
	2	16	1573pg/ml	69.21	= 4.4%
	3	16	4363pg/ml	314.13	= 7.2%
	批次间				
	样品	n	Mean	SD	CV%
	1	24	266pg/ml	20.74	= 7.8%
	2	24	1683pg/ml	82.46	= 4.9%
	3	24	4290pg/ml	347.49	= 8.1%
样品类型	Cell culture supernatant, Serum, Tissue				
检测类型	Sandwich (quantitative)				
灵敏度	< 10 pg/ml				
范围	156 pg/ml - 10000 pg/ml				
实验步骤	Multiple steps standard assay				
种属反应性	与反应: Human				
产品概述	Abcam's Human BMP5 <i>in vitro</i> ELISA (Enzyme-Linked Immunosorbent Assay) kit is designed for the accurate quantitative measurement of Human BMP5 in cell culture supernatants, serum and bone tissue.				

A BMP5 specific mouse monoclonal antibody has been precoated onto 96-well plates. Standards and test samples are added to the wells and incubated. A biotinylated detection polyclonal

antibody from goat, specific for BMP5 is then added followed by washing with PBS or TBS buffer. Avidin-Biotin-Peroxidase Complex is added and unbound conjugates are washed away with PBS or TBS buffer. TMB is then used to visualize the HRP enzymatic reaction. TMB is catalyzed by HRP to produce a blue color product that changes into yellow after adding acidic stop solution. The density of yellow coloration is directly proportional to the Human BMP5 amount of sample captured in plate.

平台 Microplate

性能

存放说明 Store at -20°C. Please refer to protocols.

组件	标识符	1 x 96 tests
ABC Diluent Buffer	Blue Cap	1 x 12ml
Antibody Diluent Buffer	Green Cap	1 x 12ml
Anti-Human BMP5 antibody Microplate (12 x 8 wells)		1 unit
Avidin-Biotin-Peroxidase Complex (ABC)		1 x 100µl
Biotinylated anti-Human BMP5 antibody		1 x 100µl
Lyophilized recombinant Human BMP5 standard		2 x 10ng
Plate Seal		1 x 4 units
Sample Diluent Buffer	Green Cap	1 x 30ml
TMB Color Developing Agent	Amber Bottle	1 x 10ml
TMB Stop Solution	Yellow Cap	1 x 10ml
Wash Buffer (25X)		1 x 20ml

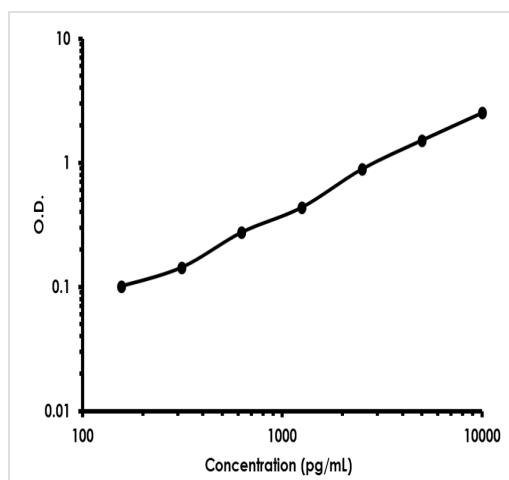
功能 Induces cartilage and bone formation.

组织特异性 Expressed in the lung and liver.

序列相似性 Belongs to the TGF-beta family.

细胞定位 Secreted.

图片



Representative Standard Curve using ab119583.

Typical Standard Curve

Please note: All products are "FOR RESEARCH USE ONLY. NOT FOR USE IN DIAGNOSTIC PROCEDURES"

Our Abpromise to you: Quality guaranteed and expert technical support

- Replacement or refund for products not performing as stated on the datasheet
- Valid for 12 months from date of delivery
- Response to your inquiry within 24 hours
- We provide support in Chinese, English, French, German, Japanese and Spanish
- Extensive multi-media technical resources to help you
- We investigate all quality concerns to ensure our products perform to the highest standards

If the product does not perform as described on this datasheet, we will offer a refund or replacement. For full details of the Abpromise, please visit <https://www.abcam.cn/abpromise> or contact our technical team.

Terms and conditions

- Guarantee only valid for products bought direct from Abcam or one of our authorized distributors