

Human Apolipoprotein E ELISA Kit (APOE) ab108813

★★★★★ 7 Abreviews 30 References 2 图像

概述

|       |   |   |      |    |       |
|-------|---|---|------|----|-------|
| 产品名称  | 人Apolipoprotein E ELISA试剂盒(APOE)  |   |      |    |       |
| 检测方法  | Colorimetric  |   |      |    |       |
| 精确度   | 批次内   |   |      |    |       |
|       | 样品  | n | Mean | SD | CV%   |
|       | Overall   |   |      |    | 6.4%  |
|       | 批次间   |   |      |    |       |
|       | 样品  | n | Mean | SD | CV%   |
|       | Overall   |   |      |    | 10.1% |
| 样品类型  | Cell culture supernatant, Serum, Plasma, Cerebral Spinal Fluid  |   |      |    |       |
| 检测类型  | Sandwich (quantitative)   |   |      |    |       |
| 灵敏度   | = 3 ng/ml   |   |      |    |       |
| 范围    | 0.016 µg/ml - 0.125 µg/ml   |   |      |    |       |
| 回收率   | 97 %  |   |      |    |       |
| 检测时间  | 4h 00m  |   |      |    |       |
| 实验步骤  | Multiple steps standard assay   |   |      |    |       |
| 种属反应性 | 与反应: Human  |   |      |    |       |
|       | 不与反应: Cynomolgus monkey   |   |      |    |       |
| 产品概述  | Human Apolipoprotein E ELISA kit (ApoE) is designed for the quantitative measurement of Apolipoprotein E concentrations in human plasma, serum, cerebrospinal fluid and cell culture supernatant samples. |   |      |    |       |

amount of Apolipoprotein E captured in plate. The kit recognizes ApoE-2, ApoE-3, and ApoE-4 isoforms.

**The entire kit may be stored at -20°C for long term storage before reconstitution - Avoid repeated freeze-thaw cycles.**

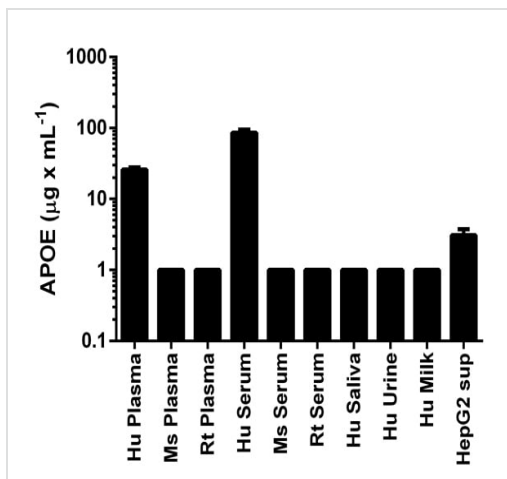
平台 Microplate

## 性能

存放说明 Store at -20°C. Please refer to protocols.

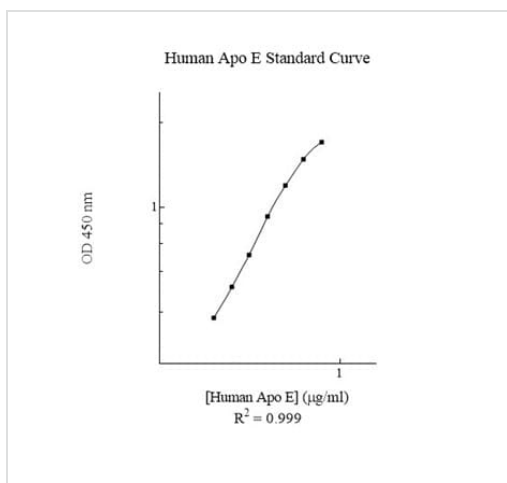
| 组件   | 1 x 96 tests | 1 x 96 tests |
|--|--------------|--------------|
| 100X Streptavidin-Peroxidase Conjugate           | 1 x 80μl     | 1 x 80μl     |
| 10X Diluent M Concentrate                        | 1 x 30ml     | 1 x 30ml     |
| 1X Standard Diluent                              | 1 x 2ml      | 1 x 2ml      |
| 20X Wash Buffer Concentrate                      | 2 x 30ml     | 2 x 30ml     |
| 30X Biotinylated Human Apolipoprotein E Antibody | 1 vial       | 1 vial       |
| Apolipoprotein E Microplate (12 x 8 well strips) | 1 unit       | 1 unit       |
| Apolipoprotein E Standard                        | 2 vials      | 2 vials      |
| Chromogen Substrate                              | 1 x 7ml      | 1 x 7ml      |
| Sealing Tapes                                    | 3 units      | 3 units      |
| Stop Solution                                    | 1 x 11ml     | 1 x 11ml     |

## 图片



Apolipoprotein E measured in biological fluids and cell culture medium with background signal subtracted (duplicates +/- SD).

Sandwich ELISA - Apolipoprotein E (APOE) Human  
ELISA Kit (ab108813)



Representative Standard Curve using ab108813.

Typical Standard Curve

**Please note:** All products are "FOR RESEARCH USE ONLY. NOT FOR USE IN DIAGNOSTIC PROCEDURES"

### Our Abpromise to you: Quality guaranteed and expert technical support

- Replacement or refund for products not performing as stated on the datasheet
- Valid for 12 months from date of delivery
- Response to your inquiry within 24 hours
- We provide support in Chinese, English, French, German, Japanese and Spanish
- Extensive multi-media technical resources to help you
- We investigate all quality concerns to ensure our products perform to the highest standards

If the product does not perform as described on this datasheet, we will offer a refund or replacement. For full details of the Abpromise, please visit <https://www.abcam.cn/abpromise> or contact our technical team.

## Terms and conditions

---

- Guarantee only valid for products bought direct from Abcam or one of our authorized distributors