

# Human Alpha 1 acid Glycoprotein / AGP ELISA Kit (AGP) ab108854

[8 References](#) [2 图像](#)

### 概述

**产品名称** 人Alpha 1 acid Glycoprotein / AGP ELISA试剂盒(AGP)

**检测方法** Colorimetric

**精确度** 批次内

样品	n	Mean	SD	CV%
Overall				5.3%

批次间

样品	n	Mean	SD	CV%
Overall				11.1%

**样品类型** Serum, Plasma

**检测类型** Competitive

**灵敏度** = 94 ng/ml

**范围** 0.25 µg/ml - 2 µg/ml

**回收率** = 98 %

**检测时间** 3h 00m

**实验步骤** Multiple steps standard assay

**种属反应性** 与反应: Human

**产品概述** Abcam's Alpha 1 acid Glycoprotein / AGP Human *in vitro* competitive ELISA (Enzyme-Linked Immunosorbent Assay) kit is designed for the quantitative measurement of Alpha 1 acid Glycoprotein / AGP in plasma and serum.

An Alpha 1 acid Glycoprotein / AGP specific antibody has been precoated onto 96-well plates and blocked. Standards or test samples are added to the wells and subsequently biotinylated Alpha 1 acid Glycoprotein / AGP is added and then followed by washing with wash buffer. Streptavidin-Peroxidase Conjugate is added and unbound conjugates are washed away with wash buffer. TMB is then used to visualize Streptavidin-Peroxidase enzymatic reaction. TMB is catalyzed by Streptavidin-Peroxidase to produce a blue color product that changes into yellow

after adding acidic stop solution. The density of yellow coloration is inversely proportional to the amount of Alpha 1 acid Glycoprotein / AGP captured in plate.

**The entire kit may be stored at -20°C for long term storage before reconstitution - Avoid repeated freeze-thaw cycles.**

**平台** Microplate

## 性能

**存放说明** Store at -20°C. Please refer to protocols.

组件	1 x 96 tests
100X Streptavidin-Peroxidase Conjugate	1 x 80µl
10X Diluent N Concentrate	1 x 30ml
1X Biotinylated Human Alpha 1 acid Glycoprotein / AGP (Lyophilized)	1 vial
20X Wash Buffer Concentrate	1 x 30ml
Alpha 1 acid Glycoprotein / AGP Microplate (12 x 8 well strips)	1 unit
Alpha 1 acid Glycoprotein / AGP Standard	1 vial
Chromogen Substrate	1 x 7ml
Sealing Tapes	3 units
Stop Solution	1 x 11ml

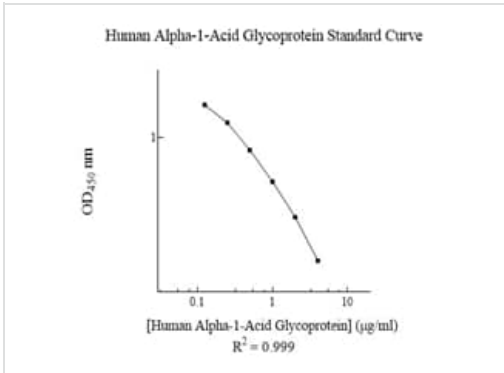
**功能** Appears to function in modulating the activity of the immune system during the acute-phase reaction.

**组织特异性** Expressed by the liver and secreted in plasma.

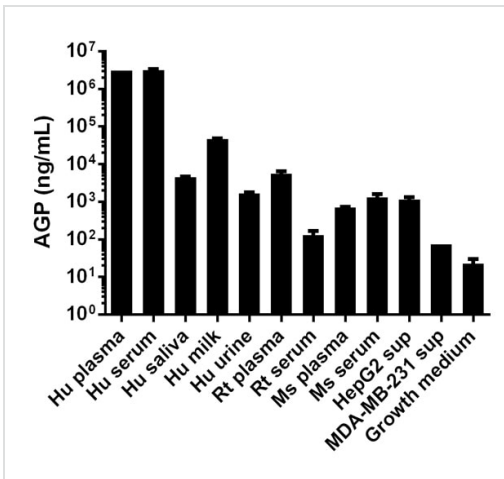
**序列相似性** Belongs to the calycin superfamily. Lipocalin family.

**细胞定位** Secreted.

## 图片



Typical Standard Curve



Competitive ELISA - Alpha1 acid Glycoprotein / AGP (ab108854)

Alpha1 acid Glycoprotein / AGP measured in various biological fluids showing quantity (ng) per mL of sample tested

**Please note:** All products are "FOR RESEARCH USE ONLY. NOT FOR USE IN DIAGNOSTIC PROCEDURES"

### Our Abpromise to you: Quality guaranteed and expert technical support

- Replacement or refund for products not performing as stated on the datasheet
- Valid for 12 months from date of delivery
- Response to your inquiry within 24 hours
- We provide support in Chinese, English, French, German, Japanese and Spanish
- Extensive multi-media technical resources to help you
- We investigate all quality concerns to ensure our products perform to the highest standards

If the product does not perform as described on this datasheet, we will offer a refund or replacement. For full details of the Abpromise, please visit <https://www.abcam.cn/abpromise> or contact our technical team.

### Terms and conditions

- Guarantee only valid for products bought direct from Abcam or one of our authorized distributors