



Product datasheet

Human Albumin ELISA Kit, Fluorescent ab229386

重组 CatchPoint® SimpleStep ELISA®

4 图像

概述

产品名称 人Albumin ELISA试剂盒, Fluorescent

检测方法 Fluorescent

批次内				
样品	n	Mean	SD	CV%
Serum	8			5.2%

批次间				
样品	n	Mean	SD	CV%
Serum	3			7.6%

样品类型 Cell culture supernatant, Serum, Hep Plasma, EDTA Plasma, Cit plasma

检测类型 Sandwich (quantitative)

灵敏度 0.26 ng/ml

范围 0.39 ng/ml - 100 ng/ml

特定样本回收率		
样品类型	平均%	范围
Cell culture supernatant	105	100% - 108%
Serum	100	92% - 110%
Hep Plasma	98	89% - 105%
EDTA Plasma	104	97% - 109%
Cit plasma	101	100% - 103%

检测时间 1h 30m

实验步骤 One step assay

种属反应性	与反应: Human
产品概述	<p>Albumin <i>in vitro</i> CatchPoint SimpleStep ELISA (Enzyme-Linked Immunosorbent Assay) kit is designed for the quantitative measurement of Albumin ;evels in human serum, plasma and cell culture supernatants.</p> <p>This CatchPoint SimpleStep ELISA kit has been optimized for Molecular Devices Microplate Readers. Click here for a list of recommended Microplate Readers.</p> <p>If using a Molecular Devices' plate reader supported by SoftMax® Pro software, a preconfigured protocol for these CatchPoint SimpleStep ELISA Kits is available with all the protocol and analysis settings at www.softmaxpro.org.</p> <p>The CatchPoint SimpleStep ELISA employs an affinity tag labeled capture antibody and a reporter conjugated detector antibody which immunocapture the sample analyte in solution. This entire complex (capture antibody/analyte/detector antibody) is in turn immobilized via immunoaffinity of an anti-tag antibody coating the well. To perform the assay, samples or standards are added to the wells, followed by the antibody mix. After incubation, the wells are washed to remove unbound material. CatchPoint HRP Development Solution containing the Stoplight Red Substrate is added. During incubation, the substrate is catalyzed by HRP generating a fluorescent product. Signal is generated proportionally to the amount of bound analyte and the intensity is measured in a fluorescence plater reader at 530/570/590 nm Excitation/Cutoff/Emission.</p>
说明	Albumin (ALB), the main protein of plasma, has a good binding capacity for water, Ca ²⁺ , Na ⁺ , K ⁺ , fatty acids, hormones, bilirubin and drugs. Its main function is the regulation of the colloidal osmotic pressure of blood. It also serves as a major zinc transporter in plasma, typically binding about 80% of all plasma zinc.
平台	Pre-coated microplate (12 x 8 well strips)

性能

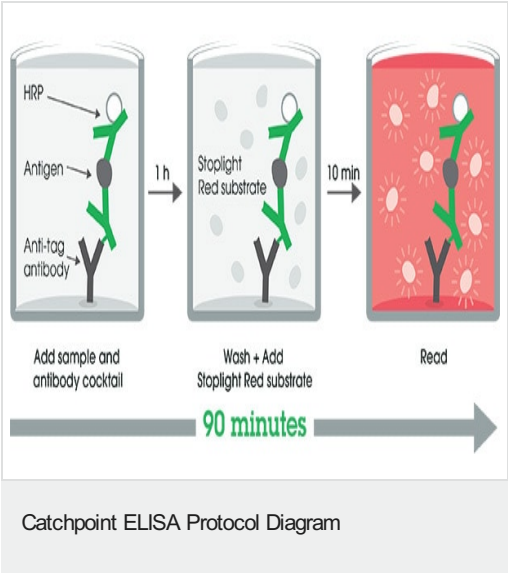
存放说明 Store at +4°C. Please refer to protocols.

组件	1 x 96 tests
100X Stoplight Red Substrate	1 x 120µl
10X Human Albumin Capture Antibody	1 x 600µl
10X Human Albumin Detector Antibody	1 x 600µl
10X Wash Buffer PT (ab206977)	1 x 20ml
500X Hydrogen Peroxide (H2O2, 3%)	1 x 50µl
Antibody Diluent CP	1 x 6ml
Human Albumin Lyophilized Purified Protein	2 vials
Plate Seals	1 unit

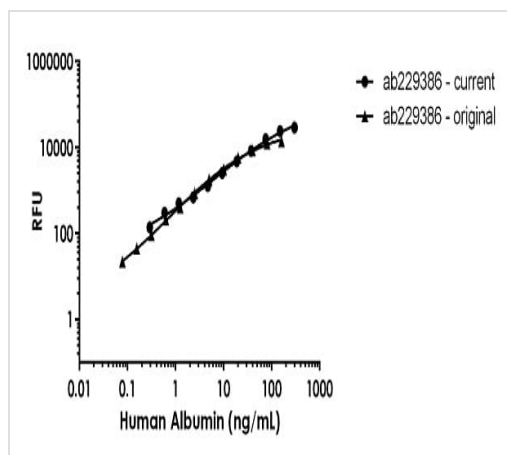
组件	1 x 96 tests
Sample Diluent NS (ab193972)	1 x 50ml
SimpleStep Pre-Coated Black 96-Well Microplate	1 unit
Stoplight Red Substrate Buffer	1 x 12ml

功能	Serum albumin, the main protein of plasma, has a good binding capacity for water, Ca(2+), Na(+), K(+), fatty acids, hormones, bilirubin and drugs. Its main function is the regulation of the colloidal osmotic pressure of blood. Major zinc transporter in plasma, typically binds about 80% of all plasma zinc.
组织特异性	Plasma.
疾病相关	Defects in ALB are a cause of familial dysalbuminemic hyperthyroxinemia (FDH) [MIM:103600]. FDH is a form of euthyroid hyperthyroxinemia that is due to increased affinity of ALB for T(4). It is the most common cause of inherited euthyroid hyperthyroxinemia in Caucasian population.
序列相似性	Belongs to the ALB/AFP/VDB family. Contains 3 albumin domains.
翻译后修饰	Kenitra variant is partially O-glycosylated at Thr-620. It has two new disulfide bonds Cys-600 to Cys-602 and Cys-601 to Cys-606. Glycated in diabetic patients. Phosphorylation sites are present in the extracellular medium. Acetylated on Lys-223 by acetylsalicylic acid.
细胞定位	Secreted.

图片

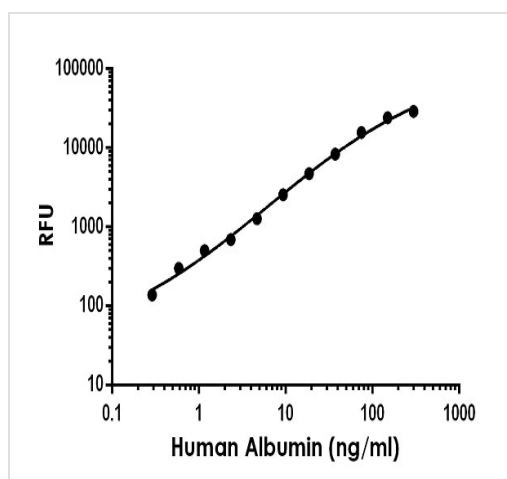


SimpleStep ELISA technology allows the formation of the antibody-antigen complex in one single step, reducing assay time to 90 minutes. Add samples or standards and antibody mix to wells all at once, incubate, wash, and add your final substrate. See protocol for a detailed step-by-step guide.



Human Albumin standard curve comparison

Standard Curve comparison between the original Human Albumin Catchpoint ELISA kit and current Human Albumin Catchpoint ELISA kit.



Example of human Albumin standard curve in Sample Diluent NS.

The Albumin standard curve was prepared as described in Section 10. Raw data generated on SpectraMax M4 Multi-Mode Microplate Reader is shown in the table. Background-subtracted data values (mean \pm SD) are graphed.

Powered by
recombinant antibodies



Research with confidence
Consistent and reproducible results



Long-term and scalable supply
Recombinant technology



Success from the first experiment
Confirmed specificity



Ethical standards compliant
Animal-free production

Sandwich ELISA - Human Albumin ELISA Kit,
Fluorescent (ab229386)

To learn more about the advantages of recombinant antibodies see [here](#).

Please note: All products are "FOR RESEARCH USE ONLY. NOT FOR USE IN DIAGNOSTIC PROCEDURES"

Our Abpromise to you: Quality guaranteed and expert technical support

- Replacement or refund for products not performing as stated on the datasheet
- Valid for 12 months from date of delivery
- Response to your inquiry within 24 hours
- We provide support in Chinese, English, French, German, Japanese and Spanish
- Extensive multi-media technical resources to help you
- We investigate all quality concerns to ensure our products perform to the highest standards

If the product does not perform as described on this datasheet, we will offer a refund or replacement. For full details of the Abpromise, please visit <https://www.abcam.cn/abpromise> or contact our technical team.

Terms and conditions

- Guarantee only valid for products bought direct from Abcam or one of our authorized distributors