

6-keto-PGF1 alpha ELISA Kit ab133023

1 References 2 图像

概述

产品名称6-keto-PGF1 alpha ELISA试剂盒

检测方法Colorimetric

精确度	批次内				
	样品	n	Mean	SD	CV%
	Low conc.	10	41pg/ml		13.1%
	Medium conc.	10	240pg/ml		4.8%
	High conc.	10	4886pg/ml		2.9%

	批次间				
	样品	n	Mean	SD	CV%
	Low conc.	8	239pg/ml		7.9%
	Medium conc.	8	1220pg/ml		5.2%
	High conc.	8	4828pg/ml		6%

样品类型Cell culture supernatant, Saliva, Urine, Serum, Plasma, Tissue Culture Media

检测类型Competitive

灵敏度1.4 pg/ml

范围3.2 pg/ml - 50000 pg/ml

回收率	特定样本回收率		
	样品类型	平均%	范围
	Saliva	110.7	% - %
	Urine	108.7	% - %
	Serum	108.4	% - %

样品类型	平均%	范围
Tissue Culture Media	106.7	% - %

检测时间

3h 00m

实验步骤

Multiple steps standard assay

种属反应性

与反应: Human, a wide range of other species

产品概述

Abcam's 6-keto-PGF₁ alpha *in vitro* competitive ELISA (Enzyme-Linked Immunosorbent Assay) kit is designed for the accurate quantitative measurement of 6-keto-PGF₁ alpha in serum, urine, tissue culture media and other biological fluids.

A donkey anti-sheep IgG antibody has been precoated onto 96-well plates. Standards or test samples are added to the wells, along with an alkaline phosphatase (AP) conjugated-6-keto-PGF₁ alpha antigen and a polyclonal sheep antibody specific to 6-keto-PGF₁ alpha. After incubation the excess reagents are washed away. pNpp substrate is added. After a short incubation the enzyme reaction is stopped and the yellow color generated by alkaline phosphatase is read at 405 nm. The intensity of the yellow coloration is inversely proportional to the amount of 6-keto-PGF₁α captured in the plate.

说明

6-keto-PGF₁α is a stable hydrolysis product of prostacyclin (PGI₂). Due to the short half-life of PGI₂ in buffer (2-3 minutes) the production of prostacyclin is typically monitored by measurement of the 6-keto-PGF₁α metabolite and its derivative in urine, 2,3-dinor-6-keto-PGF₁α. PGI₂ has autocrine functions that include platelet aggregation, inhibition of vasoconstrictor responses to pressor hormones, platelet anti- and disaggregatory properties, and reproductive functions. The effects are induced by receptor-mediated elevation of cAMP. Prostacyclin has clinical applications in atherosclerosis and protection from myocardial ischemia.

Cross Reactivity

Compound	Cross Reactivity
6-keto-PGF ₁ α	100%
2,3-dinor-6-keto-PGF ₁ α	3.17%
PGF ₂ α	1.67%
PGD ₂	0.60%
PGF ₁ α	0.60%
PGE ₁	0.20%
6,15-diketo-13,14-dihydro-PGF ₁ α	0.12%

13,14-dihydro-15-keto-PGF _{1α}	<0.01%
15-keto-PGF _{2α}	<0.01%
PGA ₂	<0.01%
PGB ₁	<0.01%
PGE ₂	<0.01%
Thromboxane B ₂	<0.01%
15-HpETE	<0.01%
2-Arachidonoylglycerol	<0.01%
Anandamide	<0.01%

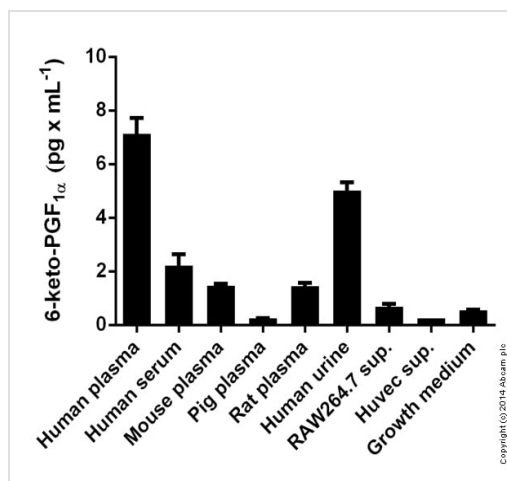
平台 Microplate

性能

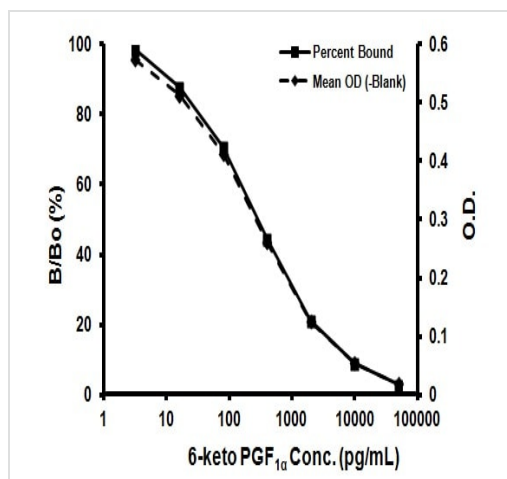
存放说明 Store at +4°C. Please refer to protocols.

组件	1 x 96 tests
20X Wash Buffer Concentrate	1 x 27ml
6-keto-PGF ₁ alpha Alkaline Phosphatase Conjugate	1 x 5ml
6-keto-PGF ₁ alpha EIA Antibody	1 x 5ml
6-keto-PGF ₁ alpha Standard	1 x 500μl
Assay Buffer	1 x 27ml
Donkey anti-sheep IgG Microplate (12 x 8 wells)	1 unit
Plate Sealer	1 unit
pNpp Substrate	1 x 20ml
Stop Solution	1 x 5ml

图片



Competitive binding assay - 133023 6-keto-PGF1
alpha ELISA Kit



Typical Standard Curve

Representative Standard Curve using ab133023.

Please note: All products are "FOR RESEARCH USE ONLY. NOT FOR USE IN DIAGNOSTIC PROCEDURES"

Our Abpromise to you: Quality guaranteed and expert technical support

- Replacement or refund for products not performing as stated on the datasheet
- Valid for 12 months from date of delivery
- Response to your inquiry within 24 hours
- We provide support in Chinese, English, French, German, Japanese and Spanish
- Extensive multi-media technical resources to help you
- We investigate all quality concerns to ensure our products perform to the highest standards

If the product does not perform as described on this datasheet, we will offer a refund or replacement. For full details of the Abpromise, please visit <https://www.abcam.cn/abpromise> or contact our technical team.

Terms and conditions

- Guarantee only valid for products bought direct from Abcam or one of our authorized distributors