

MBD1 overexpression 293T lysate (whole cell) ab94263

2 图像

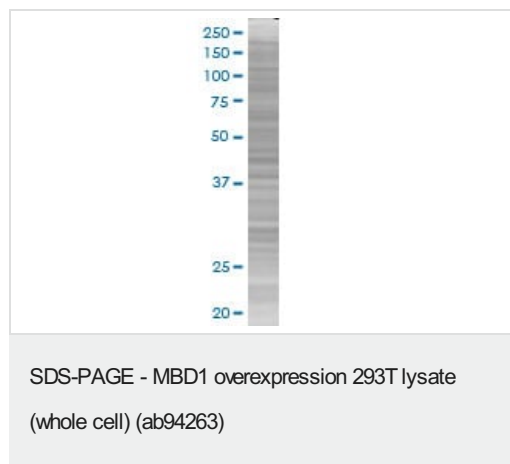
概述	
产品名称	MBD1 overexpression 293T裂解物(whole cell)
常规说明	ab94263 is a 293T cell transfected lysate in which Human MBD1 has been transiently over-expressed using a pCMV-MBD1 plasmid. The lysate is provided in 1X Sample Buffer.
经测试应用	适用于: WB
性能	
Mycoplasma free	Yes
形式	Liquid
存放说明	Shipped on dry ice. Upon delivery aliquot and store at -20°C. Avoid freeze / thaw cycles.
存储溶液	Constituents: 0.01% Bromophenol blue, 2.3% Beta mercaptoethanol, 2% Sodium lauryl sulfate, 0.788% Tris HCl, 10% Glycerol (glycerin, glycerine)
背景	Function: Transcriptional repressor that binds CpG islands in promoters where the DNA is methylated at position 5 of cytosine within CpG dinucleotides. Binding is abolished by the presence of 7-mG that is produced by DNA damage by methylmethanesulfonate (MMS). Acts as transcriptional repressor and plays a role in gene silencing by recruiting AFT7IP, which in turn recruits factors such as the histone methyltransferase SETDB1. Probably forms a complex with SETDB1 and ATF7IP that represses transcription and couples DNA methylation and histone 'Lys-9' trimethylation. Isoform 1 and isoform 2 can also repress transcription from unmethylated promoters. Tissue specificity: Widely expressed. Similarity: Contains 3 CXXC-type zinc fingers. Contains 1 MBD (methyl-CpG-binding) domain. Domain: The methyl-CpG-binding domain (MBD) functions both in binding to methylated DNA and in protein interactions. The third CXXC-type zinc finger mediates binding to non-methylated CpG dinucleotides. The transcriptional repression domain (TRD) is involved in transcription repression and in protein interactions. PTM: Sumoylated with SUMO1 by PIAS1 and PIAS3. Sumoylation affects transcriptional silencing by preventing the interaction with SETDB1. In contrast, sumoylation may increase interaction with AFT7IP. Phosphorylated upon DNA damage, probably by ATM or ATR.
应用	

The Abpromise guarantee **Abpromise™**承诺保证使用ab94263于以下的经测试应用

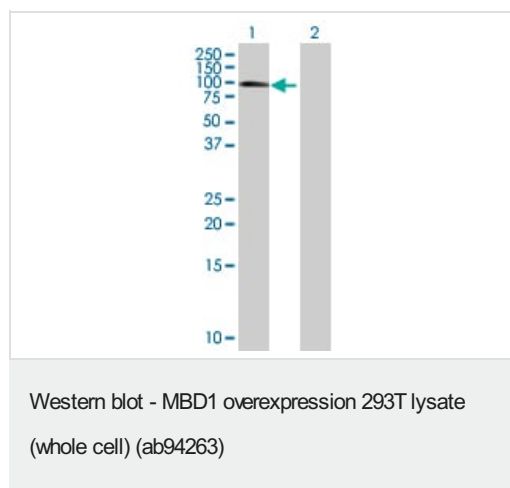
“应用说明”部分 下显示的仅为推荐的起始稀释度;实际最佳的稀释度/浓度应由使用者检定。

应用	Ab评论	说明
WB		Use at an assay dependent dilution.

图片



ab94263 at 15µg/lane on an SDS-PAGE gel.



All lanes : Anti-MBD1 antibody (**ab89534**) at 1/500 dilution

Lane 1 : MBD1 overexpression 293T lysate (whole cell) (ab94263)

Lane 2 : 293T non-transfected lysate

Lysates/proteins at 25 µg per lane.

Secondary

All lanes : Goat Anti-mouse IgG (H and L) HRP conjugated at 1/2500 dilution

Please note: All products are "FOR RESEARCH USE ONLY. NOT FOR USE IN DIAGNOSTIC PROCEDURES"

Our Abpromise to you: Quality guaranteed and expert technical support

- Replacement or refund for products not performing as stated on the datasheet
- Valid for 12 months from date of delivery
- Response to your inquiry within 24 hours
- We provide support in Chinese, English, French, German, Japanese and Spanish
- Extensive multi-media technical resources to help you
- We investigate all quality concerns to ensure our products perform to the highest standards

If the product does not perform as described on this datasheet, we will offer a refund or replacement. For full details of the Abpromise, please visit <https://www.abcam.cn/abpromise> or contact our technical team.

Terms and conditions

- Guarantee only valid for products bought direct from Abcam or one of our authorized distributors