

### KChIP2 overexpression 293T lysate (whole cell) ab94274

#### 2 图像

#### 概述

产品名称	KChIP2 overexpression 293T裂解物(whole cell)
常规说明	ab94274 is a 293T cell transfected lysate in which Human KChIP2 has been transiently over-expressed using a pCMV-KChIP2 plasmid. The lysate is provided in 1X Sample Buffer.
经测试应用	适用于: WB

#### 性能

Mycoplasma free	Yes
形式	Liquid
存放说明	Shipped on dry ice. Upon delivery aliquot and store at -20°C. Avoid freeze / thaw cycles.
存储溶液	Constituents: 0.01% Bromophenol blue, 2.3% Beta mercaptoethanol, 2% Sodium lauryl sulfate, 0.788% Tris HCl, 10% Glycerol (glycerin, glycerine)
背景	Function: Regulatory subunit of Kv4/D (Shal)-type voltage-gated rapidly inactivating A-type potassium channels. Modulates channel density, inactivation kinetics and rate of recovery from inactivation in a calcium-dependent and isoform-specific manner. In vitro, modulates KCND2/Kv4.2 and KCND3/Kv4.3 currents. Involved in KCND2 and KCND3 trafficking to the cell surface. May be required for the expression of I(To) currents in the heart. PTM: Palmitoylated. Palmitoylation enhances association with the plasma membrane. Similarity: Belongs to the recoverin family. Contains 4 EF-hand domains. Tissue specificity: Expressed in brain. Colocalizes with KCND2 in excitatory neurons including cortical and hippocampal CA1 pyramidal cells. Isoform 3 is expressed in heart and in umbilical vein endothelial cells. Not expressed in fetal heart.

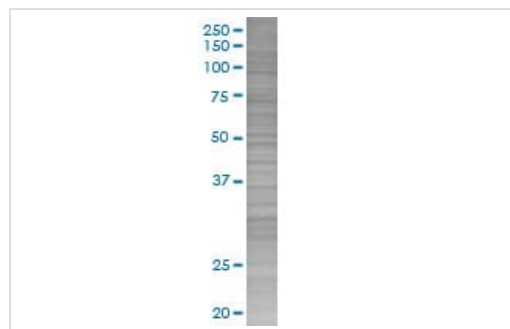
#### 应用

**The Abpromise guarantee**      **Abpromise™** 承诺保证使用ab94274于以下的经测试应用

“应用说明”部分 下显示的仅为推荐的起始稀释度;实际最佳的稀释度/浓度应由使用者检定。

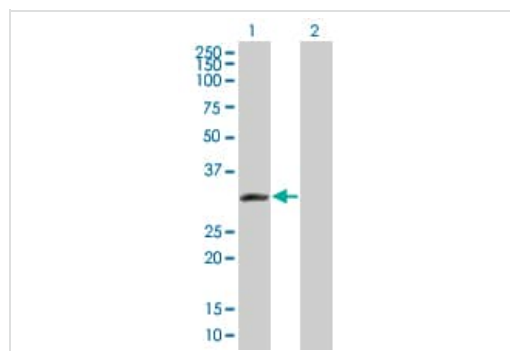
应用	Ab评论	说明
WB		Use at an assay dependent dilution.

## 图片



SDS-PAGE - KChIP2 overexpression 293T lysate  
(whole cell) (ab94274)

ab94274 at 15 $\mu$ g/lane on an SDS-PAGE gel.



Western blot - KChIP2 overexpression 293T lysate  
(whole cell) (ab94274)

**All lanes :** Anti-KChIP2 antibody (**ab57207**) at 1/500 dilution

**Lane 1 :** KChIP2 overexpression 293T lysate (whole cell)  
(ab94274)

**Lane 2 :** 293T non-transfected lysate

Lysates/proteins at 25  $\mu$ g per lane.

### Secondary

**All lanes :** Goat Anti-mouse IgG (H and L) HRP conjugated at  
1/2500 dilution

**Please note:** All products are "FOR RESEARCH USE ONLY. NOT FOR USE IN DIAGNOSTIC PROCEDURES"

## Our Abpromise to you: Quality guaranteed and expert technical support

- Replacement or refund for products not performing as stated on the datasheet
- Valid for 12 months from date of delivery
- Response to your inquiry within 24 hours
- We provide support in Chinese, English, French, German, Japanese and Spanish
- Extensive multi-media technical resources to help you
- We investigate all quality concerns to ensure our products perform to the highest standards

If the product does not perform as described on this datasheet, we will offer a refund or replacement. For full details of the Abpromise, please visit <https://www.abcam.cn/abpromise> or contact our technical team.

## Terms and conditions

- Guarantee only valid for products bought direct from Abcam or one of our authorized distributors