

HeLa whole cell lysate (IL1 alpha stimulated) ab14656

1 图像

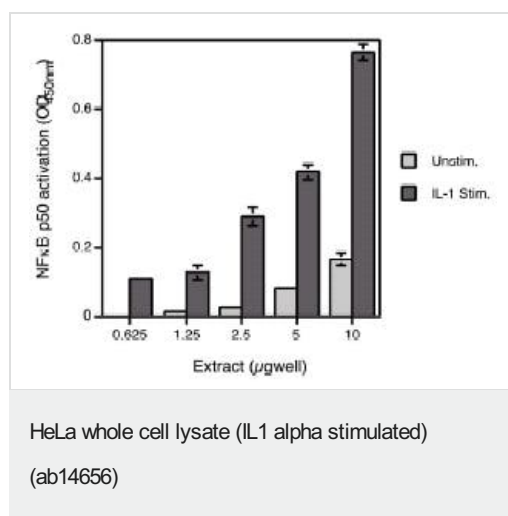
概述

产品名称	HeLa全细胞裂解物(IL1 alpha stimulated)
常规说明	<p>The HeLa whole cell extracts were collected in Lysis Buffer after a 30 minute incubation with or without IL1 alpha (5 ng/ml). The protein content was determined by a Bradford based assay. We recommend aliquoting the extracts into single use fractions and then storing them.</p> <p>Abcam has not and does not intend to apply for the REACH Authorisation of customers' uses of products that contain European Authorisation list (Annex XIV) substances.</p> <p>It is the responsibility of our customers to check the necessity of application of REACH Authorisation, and any other relevant authorisations, for their intended uses.</p>

性能

Mycoplasma free	Yes
形式	Liquid
存放说明	Shipped on dry ice. Upon delivery aliquot and store at -80°C. Avoid freeze / thaw cycles.
存储溶液	<p>pH: 7.50</p> <p>Constituents: 0.004% EGTA, 0.01% Magnesium chloride, 0.48% HEPES, 0.015% EDTA, 20% Glycerol, 2.05% Sodium chloride, 1% Igepal</p>
背景	<p>HeLa cells are human epithelial cells from a fatal cervical carcinoma. The cell line was derived from cervical cancer cells taken from Henrietta Lacks, in 1951. Horizontal gene transfer from human papillomavirus 18 (HPV18) to human cervical cells created the HeLa genome which is different from either parent genome in various ways including its number of chromosomes. HeLa cells have a modal chromosome number of 82, with 4 copies of chromosome 12 and 3 copies of chromosomes 6, 8, and 17. HeLa cells are adherent cells (they stick to surfaces) and maintain contact inhibition in vitro.</p>

图片



Ab14656 tested for NFκappaB activation. The signal intensity for NFκappaB activation is compared to the signal intensity obtained with extracts from unstimulated HeLa cells. After the signals are blanked, the ratio of the signals from stimulated cells over unstimulated cells must be above 4. This ratio may vary depending on the basal level of NFκappaB activation in a given cell type.

Please note: All products are "FOR RESEARCH USE ONLY. NOT FOR USE IN DIAGNOSTIC PROCEDURES"

Our Abpromise to you: Quality guaranteed and expert technical support

- Replacement or refund for products not performing as stated on the datasheet
- Valid for 12 months from date of delivery
- Response to your inquiry within 24 hours
- We provide support in Chinese, English, French, German, Japanese and Spanish
- Extensive multi-media technical resources to help you
- We investigate all quality concerns to ensure our products perform to the highest standards

If the product does not perform as described on this datasheet, we will offer a refund or replacement. For full details of the Abpromise, please visit <https://www.abcam.cn/abpromise> or contact our technical team.

Terms and conditions

- Guarantee only valid for products bought direct from Abcam or one of our authorized distributors