

Centrin 2 overexpression 293T lysate (whole cell) ab94332

2 图像

概述

产品名称	Centrin 2 overexpression 293T裂解物(whole cell)
常规说明	ab94332 is a 293T cell transfected lysate in which Human Centrin 2 has been transiently over-expressed using a pCMV-Centrin 2 plasmid. The lysate is provided in 1X Sample Buffer.
经测试应用	适用于: WB

性能

Mycoplasma free	Yes
形式	Liquid
存放说明	Shipped on dry ice. Upon delivery aliquot and store at -20°C. Avoid freeze / thaw cycles.
存储溶液	Constituents: 0.01% Bromophenol blue, 2.34% Beta mercaptoethanol, 2% Sodium lauryl sulfate, 0.79% Tris HCl, 10% Glycerol (glycerin, glycerine)
背景	<p>Function: Plays a fundamental role in microtubule-organizing center structure and function. Required for centriole duplication and correct spindle formation. Has a role in regulating cytokinesis and genome stability via cooperation with CALM1 and CEP110. Involved in global genome nucleotide excision repair (GG-NER) by acting as component of the XPC complex. Cooperatively with RAD23B appears to stabilize XPC. In vitro, stimulates DNA binding of the XPC:RAD23B dimer. The XPC complex is proposed to represent the first factor bound at the sites of DNA damage and together with other core recognition factors, XPA, RPA and the TFIIH complex, is part of the pre-incision (or initial recognition) complex. The XPC complex recognizes a wide spectrum of damaged DNA characterized by distortions of the DNA helix such as single-stranded loops, mismatched bubbles or single stranded overhangs. The orientation of XPC complex binding appears to be crucial for inducing a productive NER. XPC complex is proposed to recognize and to interact with unpaired bases on the undamaged DNA strand which is followed by recruitment of the TFIIH complex and subsequent scanning for lesions in the opposite strand in a 5'-to-3' direction by the NER machinery. Cyclobutane pyrimidine dimers (CPDs) which are formed upon UV-induced DNA damage escape detection by the XPC complex due to a low degree of structural perturbation. Instead they are detected by the UV-DDB complex which in turn recruits and cooperates with the XPC complex in the respective DNA repair. Similarity: Belongs to the centrin family. Contains 4 EF-hand domains.</p>

应用

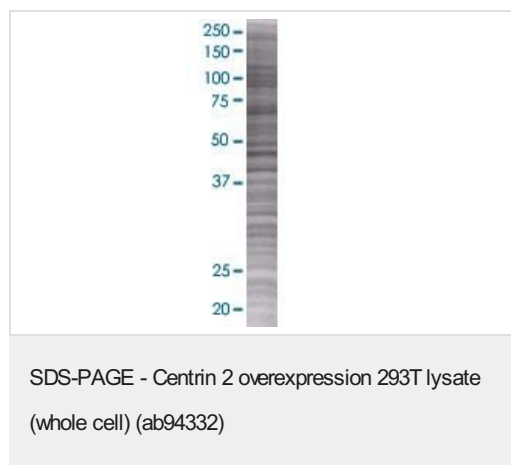
The Abpromise guarantee

Abpromise™ 承诺保证使用 ab94332 于以下的经测试应用

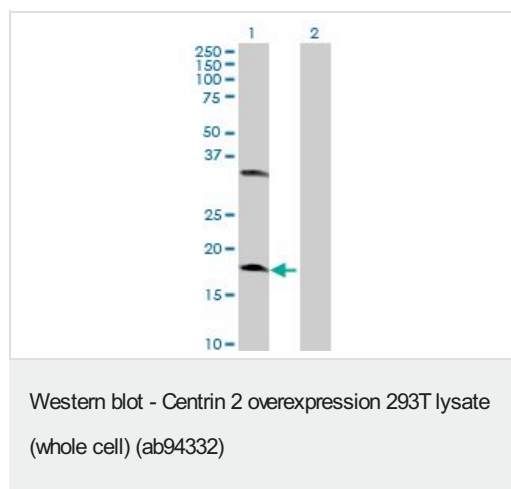
“应用说明”部分下显示的仅为推荐的起始稀释度；实际最佳的稀释度/浓度应由使用者检定。

应用	Ab评论	说明
WB		Use at an assay dependent dilution.

图片



ab94332 at 15µg/lane on an SDS-PAGE gel.



All lanes : Anti-Centrin 2 antibody ([ab54525](#)) at 1/500 dilution

Lane 1 : Centrin 2 overexpression 293T lysate (whole cell) (ab94332)

Lane 2 : 293T Non Transfected Lysate

Lysates/proteins at 25 µg per lane.

Secondary

All lanes : Goat Anti-mouse IgG (H and L) HRP conjugated at 1/2500 dilution

Please note: All products are "FOR RESEARCH USE ONLY. NOT FOR USE IN DIAGNOSTIC PROCEDURES"

Our Abpromise to you: Quality guaranteed and expert technical support

- Replacement or refund for products not performing as stated on the datasheet
- Valid for 12 months from date of delivery
- Response to your inquiry within 24 hours
- We provide support in Chinese, English, French, German, Japanese and Spanish
- Extensive multi-media technical resources to help you
- We investigate all quality concerns to ensure our products perform to the highest standards

If the product does not perform as described on this datasheet, we will offer a refund or replacement. For full details of the Abpromise, please visit <https://www.abcam.cn/abpromise> or contact our technical team.

Terms and conditions

- Guarantee only valid for products bought direct from Abcam or one of our authorized distributors