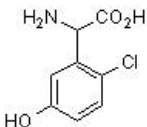


(R,S)-CHPG, mGlu5 agonist ab120039

3 References **2 图像**

概述

产品名称	(R,S)-CHPG, mGlu5激动剂
描述	Selective mGlu ₅ 激动剂
生物学描述	Selective mGlu ₅ receptor agonist. Water soluble form available - see (ab120221)
CAS编号	170846-74-9
化学结构	

性能

化学名称	(R,S)-2-Amino-2-(2-chloro-5-hydroxyphenyl)acetic acid
分子量	201.61
分子式	C ₈ H ₈ NO ₃ Cl
PubChem识别号	3645780
存放说明	Store at +4°C. Store under desiccating conditions. The product can be stored for up to 12 months.
溶解度概述	Soluble in 1 eq. NaOH to 100 mM
处理	<p>Wherever possible, you should prepare and use solutions on the same day. However, if you need to make up stock solutions in advance, we recommend that you store the solution as aliquots in tightly sealed vials at -20°C. Generally, these will be useable for up to one month. Before use, and prior to opening the vial we recommend that you allow your product to equilibrate to room temperature for at least 1 hour.</p> <p>Refer to SDS for further information.</p> <p>Need more advice on solubility, usage and handling? Please visit our frequently asked questions (FAQ) page for more details.</p>
SMILES	NC(c1cc(O)ccc1Cl)C(=O)O
来源	Synthetic

应用

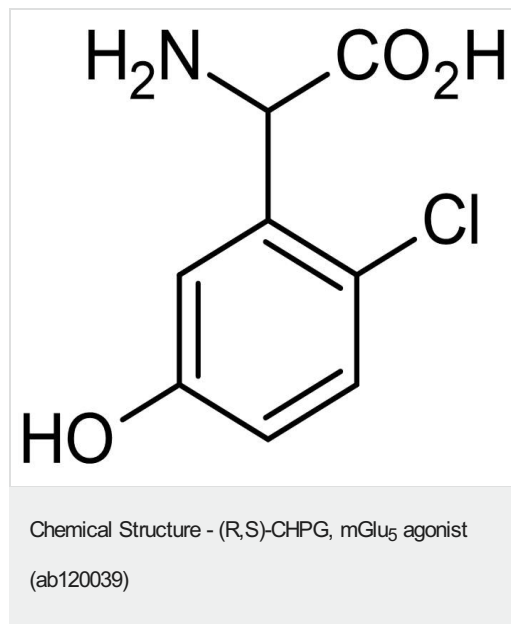
The Abpromise guarantee

Abpromise™ 承诺保证使用 ab120039 于以下的经测试应用

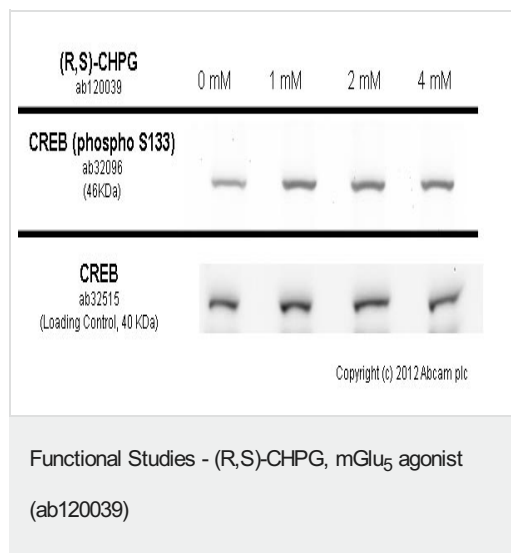
“应用说明”部分 下显示的仅为推荐的起始稀释度；实际最佳的稀释度/浓度应由使用者检定。

应用	Ab 评论	说明
Functional Studies		Use at an assay dependent concentration.

图片



2D chemical structure image of ab120039, (R,S)-CHPG, mGlu₅ agonist



SK-N-SH cells were incubated at 37°C for 30 minutes with vehicle control (0 μM) and different concentrations of (R,S)-CHPG (ab120039). Increased expression of CREB (phospho S133) in SK-N-SH cells correlates with an increase in (R,S)-CHPG concentration, as described in literature.

Whole cell lysates were prepared with RIPA buffer (containing protease inhibitors and sodium orthovanadate), 20 μg of each were loaded on the gel and the WB was run under reducing conditions. After transfer the membrane was blocked for an hour using 3% milk before being incubated with **ab32096** at 1/500 dilution and **ab32515** at 1 μg/ml overnight at 4°C. Antibody binding was detected using an anti-rabbit antibody conjugated to HRP (**ab97051**) at 1/10000 dilution and visualised using ECL development solution.

Please note: All products are "FOR RESEARCH USE ONLY. NOT FOR USE IN DIAGNOSTIC PROCEDURES, NOT FOR USE IN HUMANS"

Our Abpromise to you: Quality guaranteed and expert technical support

- Replacement or refund for products not performing as stated on the datasheet
- Valid for 12 months from date of delivery
- Response to your inquiry within 24 hours

- We provide support in Chinese, English, French, German, Japanese and Spanish
- Extensive multi-media technical resources to help you
- We investigate all quality concerns to ensure our products perform to the highest standards

If the product does not perform as described on this datasheet, we will offer a refund or replacement. For full details of the Abpromise, please visit <https://www.abcam.cn/abpromise> or contact our technical team.

Terms and conditions

- Guarantee only valid for products bought direct from Abcam or one of our authorized distributors
- Abcam biochemicals are novel compounds and we have not tested their biological activity in house. Please use the literature to identify how to use these products effectively. If you require further assistance please contact the scientific support team