

CNQX disodium salt (mM/ml), AMPA / kainate antagonist (water soluble) ab144488

[7 References](#) [2 图像](#)

概述

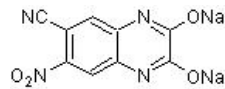
| | |
|-------|---|
| 产品名称 | CNQX disodium salt (mM/ml), AMPA / kainate拮抗剂(water soluble) |
| 描述 | AMPA / kainate拮抗剂(water soluble). 1 ml water soluble pack. |
| 生物学描述 | Water soluble, potent, competitive AMPA / kainate receptor antagonist. Also antagonist at NMDA receptor glycine site. |

Soluble in 1 ml water to give specified mM/ml concentration. [Find out more.](#)

纯度 > 99%

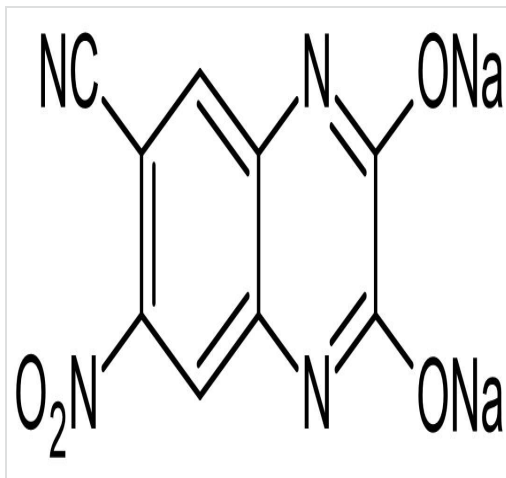
CAS编号 479347-85-8

化学结构



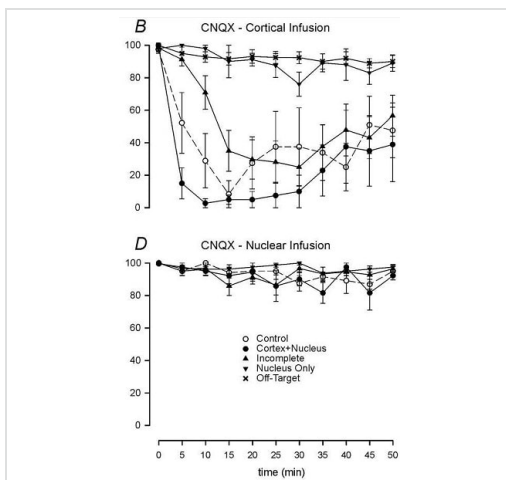
性能

| | |
|------------|--|
| 化学名称 | 1,2,3,4-Tetrahydro-7-nitro-2,3-dioxoquinoxaline-6-carbonitrile disodium |
| 分子量 | 276.12 |
| 分子式 | C ₉ H ₂ N ₄ Na ₂ O ₄ |
| PubChem识别号 | 2821 |
| 存放说明 | Store at +4°C. Store under desiccating conditions. The product can be stored for up to 12 months. |
| 溶解度概述 | Soluble in 1 ml of water to give specified mM/ml concentration |
| 处理 | Wherever possible, you should prepare and use solutions on the same day. However, if you need to make up stock solutions in advance, we recommend that you store the solution as aliquots in tightly sealed vials at -20°C. Generally, these will be useable for up to one month. Before use, and prior to opening the vial we recommend that you allow your product to equilibrate to room temperature for at least 1 hour. Need more advice on solubility, usage and handling? Please visit our frequently asked questions (FAQ) page for more details. |
| SMILES | [Na+].[Na+].[O-][N+](=O)c1cc2nc([O-])c([O-])nc2cc1C#N |



Chemical Structure - CNQX disodium salt (mM/ml),
AMPA / kainate antagonist (water soluble)
(ab144488)

2D chemical structure image of ab144488, CNQX disodium salt (mM/ml), AMPA / kainate antagonist (water soluble)



Flow Cytometry - CNQX disodium salt (mM/ml),
AMPA / kainate antagonist (water soluble)
(ab144488)

Kellett et al PLoS One. 2010; 5(7): e11737. Reproduced under the Creative Commons license <http://creativecommons.org/licenses/by/4.0/>

Effects of cortical and nuclear CNQX on performance of established CRs.

Mean (± 1 SEM) effects of CNQX (6 nmol) on CR performance when infused into cortical (2 μ l; top panels) or nuclear cannulae (1 μ l; bottom panels).

(From Figure 4 of Kellett et al).

Please note: All products are "FOR RESEARCH USE ONLY. NOT FOR USE IN DIAGNOSTIC PROCEDURES, NOT FOR USE IN HUMANS"

Our Abpromise to you: Quality guaranteed and expert technical support

- Replacement or refund for products not performing as stated on the datasheet
- Valid for 12 months from date of delivery

- Response to your inquiry within 24 hours
- We provide support in Chinese, English, French, German, Japanese and Spanish
- Extensive multi-media technical resources to help you
- We investigate all quality concerns to ensure our products perform to the highest standards

If the product does not perform as described on this datasheet, we will offer a refund or replacement. For full details of the Abpromise, please visit <https://www.abcam.cn/abpromise> or contact our technical team.

Terms and conditions

- Guarantee only valid for products bought direct from Abcam or one of our authorized distributors
- Abcam biochemicals are novel compounds and we have not tested their biological activity in house. Please use the literature to identify how to use these products effectively. If you require further assistance please contact the scientific support team