

Glucose Assay Kit - reducing agent compatible ab102517

38 References **3 图像**

概述

产品名称	Glucose Assay试剂盒- reducing agent compatible
检测方法	Colorimetric
样品类型	Cell culture supernatant, Urine, Serum, Plasma, Other biological fluids, Tissue Extracts
检测类型	Quantitative
灵敏度	> 0.02 mM
范围	0.02 mM - 10 mM
检测时间	0h 30m
产品概述	<p>Glucose Assay Kit ab102517 provides direct measurement of glucose in biological samples. It is particularly suitable for serum and urine samples since it is unaffected by reducing substances, which can interfere with detection in oxidase-based kits.</p> <p>In the glucose assay protocol, glucose is specifically oxidized to generate a product which reacts with a dye to generate color ($\lambda = 450 \text{ nm}$) whose intensity is proportional to glucose concentration.</p> <p>The method is rapid, simple, sensitive, and suitable for high throughput. The assay is also suitable for monitoring glucose level during fermentation and glucose feeding in protein expression processes.</p> <p>The kit can detect glucose concentrations in the range of 20μM-10mM.</p> <p>Glucose assay protocol summary:</p> <ul style="list-style-type: none"> - add reaction mix to sample and standard wells - incubate for 30 min - analyze with a microplate reader
说明	<p>This product is manufactured by BioVision, an Abcam company and was previously called K686 Glucose Colorimetric Assay Kit II. K686-100 is the same size as the 100 test size of ab102517.</p>
平台	Microplate reader

性能

存放说明

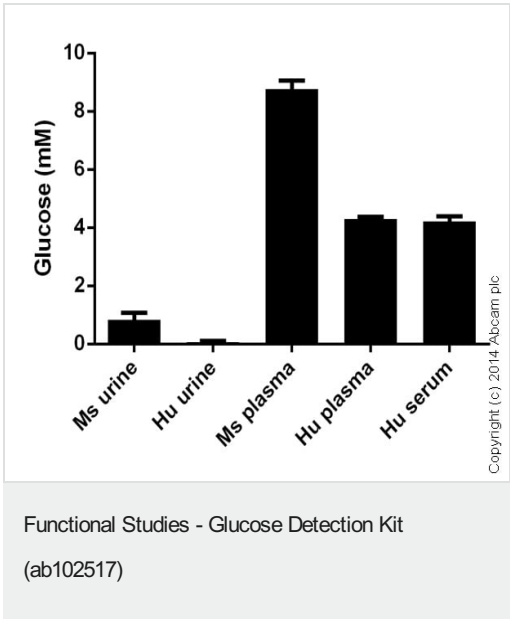
Store at -20°C. Please refer to protocols.

组件	100 tests
Assay Buffer XXXIV	1 x 25ml
Developer Solution III	1 unit
Development Enzyme Mix V	1 unit
Glucose Standard	1 x 100μl

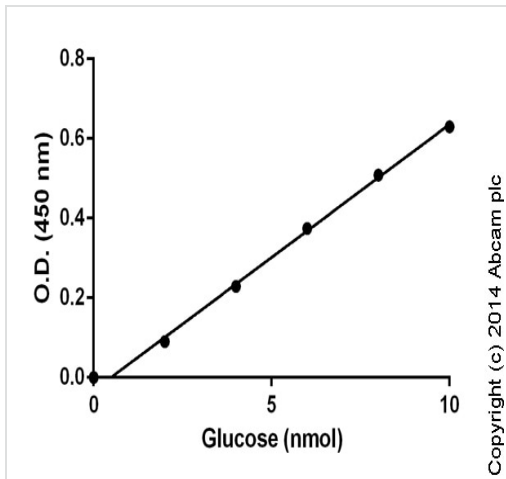
相关性

Glucose (C₆H₁₂O₆; FW: 180.16) is a ubiquitous energy source in most organisms, from bacteria to humans. The breakdown of carbohydrates produces mono- and disaccharides, most of which is glucose. Through glycolysis and TCA (citric acid cycle), glucose is oxidized to eventually form CO₂ and water, generating the universal energy molecule ATP. Glucose is a primary source of energy for the brain and a critical component in the production of proteins and in lipid metabolism and therefore measurement of glucose level is a key diagnostic parameter for many metabolic disorders.

图片

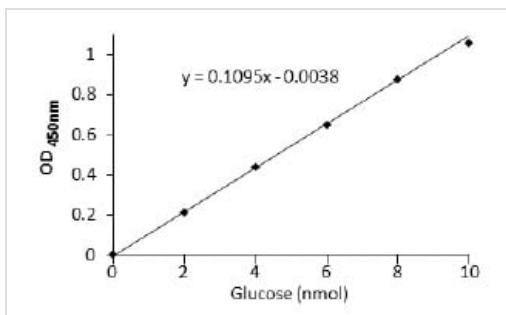


Glucose measured in biological fluids. Human samples diluted 20-80 fold. Mouse samples diluted 1-27 fold.



Standard curve: mean of duplicates (+/- SD) with background reads subtracted

Functional Studies - Glucose Detection Kit
(ab102517)



Standard curve for glucose run using the kit protocol

Functional Studies - Glucose Detection Kit
(ab102517)

Please note: All products are "FOR RESEARCH USE ONLY. NOT FOR USE IN DIAGNOSTIC PROCEDURES"

Our Abpromise to you: Quality guaranteed and expert technical support

- Replacement or refund for products not performing as stated on the datasheet
- Valid for 12 months from date of delivery
- Response to your inquiry within 24 hours

- We provide support in Chinese, English, French, German, Japanese and Spanish
- Extensive multi-media technical resources to help you
- We investigate all quality concerns to ensure our products perform to the highest standards

If the product does not perform as described on this datasheet, we will offer a refund or replacement. For full details of the Abpromise, please visit <https://www.abcam.cn/abpromise> or contact our technical team.

Terms and conditions

- Guarantee only valid for products bought direct from Abcam or one of our authorized distributors