

Fumarase Specific Activity Assay Kit ab110043

[2 References](#) [2 图像](#)

概述

产品名称 Fumarase Specific Activity Assay试剂盒

检测方法 Colorimetric

检测类型 Enzyme activity

种属反应性 **与反应:** Rat, Cow, Human
不与反应: Mouse

产品概述 ab110043 (MS780) is a novel assay that uses a high affinity monoclonal capture antibody to selectively isolate fumarase (FH), which removes all other enzymes of the Krebs cycle and NAD⁺/NADH utilizing enzymes. After isolation and subsequent measurement of the enzyme's functional activity, the quantity of isolated FH is measured in the same well by adding a second monoclonal detector antibody, which is quantified using a colorimetric label (HRP). Both reactions take place in time-dependent manners proportional to the amount of enzyme captured in each well. By combining activity and quantity measurements, the enzyme's relative specific activity can be determined. Specific activity is useful for measuring up or down regulation of activity by site-specific modification or damage, and in response to specific inhibitors.

说明 ab110043 (MS780) is a novel assay that uses a high affinity monoclonal capture antibody to selectively isolate fumarase (FH), which removes all other enzymes of the Krebs cycle and NAD⁺/NADH utilizing enzymes. After isolation and subsequent measurement of the enzyme's functional activity, the quantity of isolated FH is measured in the same well by adding a second monoclonal detector antibody, which is quantified using a colorimetric label (HRP). Both reactions take place in time-dependent manners proportional to the amount of enzyme captured in each well. By combining activity and quantity measurements, the enzyme's relative specific activity can be determined. Specific activity is useful for measuring up or down regulation of activity by site-specific modification or damage, and in response to specific inhibitors.

平台 Microplate reader

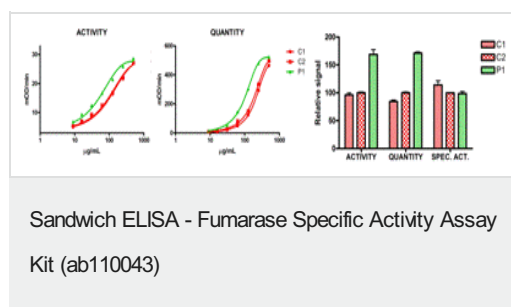
性能

存放说明 Please refer to protocols.

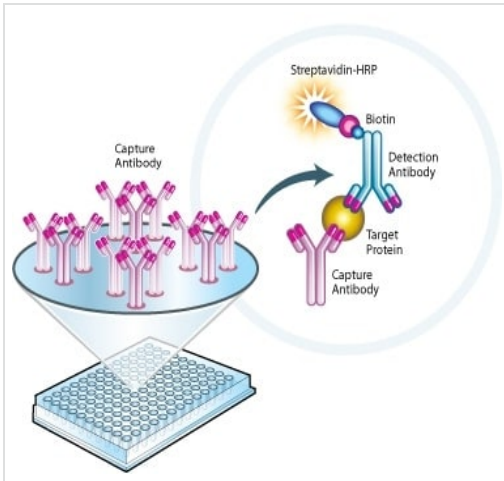
组件	96 tests
100X Detector Antibody	1 x 130µl

组件	96 tests
100X HRP Label	1 x 130µl
10X Blocking Solution	1 x 10ml
1X Base Buffer	1 x 25ml
2000X Malate dehydrogenase	1 x 20µl
200X betaNAD+	1 x 250µl
200X Fumarate (1M)	1 x 250µl
20X Wash Buffer	1 x 25ml
96-well microplate (12 strips)	1 unit
Coupler	1 x 250µl
Extraction Buffer (ab260490)	1 x 15ml
HRP Development Solution	1 x 12ml
Reagent Dye	1 x 250µl

图片



Example data obtained using the Fumarase Specific Activity Assay Kit (ab110043).



Principle of a Sandwich ELISA.

Sandwich ELISA - Fumarase Specific Activity Assay
Kit (ab110043)

Please note: All products are "FOR RESEARCH USE ONLY. NOT FOR USE IN DIAGNOSTIC PROCEDURES"

Our Abpromise to you: Quality guaranteed and expert technical support

- Replacement or refund for products not performing as stated on the datasheet
- Valid for 12 months from date of delivery
- Response to your inquiry within 24 hours
- We provide support in Chinese, English, French, German, Japanese and Spanish
- Extensive multi-media technical resources to help you
- We investigate all quality concerns to ensure our products perform to the highest standards

If the product does not perform as described on this datasheet, we will offer a refund or replacement. For full details of the Abpromise, please visit <https://www.abcam.cn/abpromise> or contact our technical team.

Terms and conditions

- Guarantee only valid for products bought direct from Abcam or one of our authorized distributors