

### Ethanol Assay Kit ab65343

[37 References](#) [5 图像](#)

#### 概述

|      |   |
|------|---|
| 产品名称 | Ethanol Assay试剂盒  |
| 检测方法 | Colorimetric/Fluorometric   |
| 样品类型 | Cell culture supernatant, Urine, Serum, Plasma, Other biological fluids, Tissue Extracts  |
| 检测类型 | Quantitative  |
| 灵敏度  | > 10 nM   |
| 范围   | 2 µM - 200 µM   |
| 检测时间 | 1h 00m  |
| 产品概述 | Ethanol Assay Kit ab65343 provides a simple, rapid, and sensitive method for accurate quantification of ethanol concentration in a variety of biological samples such as serum, plasma, other body fluids, foods, beverages and growth media. |

In the ethanol assay protocol, alcohol oxidase oxidizes ethanol to generate H<sub>2</sub>O<sub>2</sub> which reacts with a probe to generate color (absorbance max 570 nm) and fluorescence (Ex/Em 535/587 nm).

The kit detects 0.1-10 ppm alcohol (~10-800 nM).

Ethanol assay protocol summary:

- add samples and standards to wells
- add reaction mix and incubate for 30 min at 37°C
- analyze with microplate reader

**说明** This product is manufactured by BioVision, an Abcam company and was previously called K620 Ethanol Colorimetric/Fluorometric Assay Kit. K620-100 is the same size as the 100 test size of ab65343.

**PLEASE NOTE:** Extreme care should be taken to ensure that no alcohol vapors (ethanol, methanol, propanol) are in the laboratory air where this assay is to be performed. Alcohol vapors in the air will be rapidly absorbed by kit components resulting in very high background making the kit unusable. Laboratories where HPLC equipment and solvents are standing or where alcohol is used to wipe down laboratory benches or equipment are inappropriate locations to perform this assay.

平台 Microplate reader

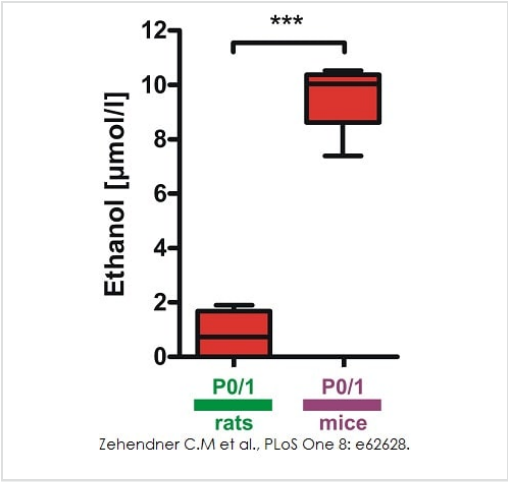
性能

存放说明Store at -20°C. Please refer to protocols.

| 组件                 | 100 tests | 2000 tests |
|--------------------|-----------|------------|
| Wash Buffer I      | 1 x 25ml  | 20 x 25ml  |
| Ethanol Enzyme Mix | 1 vial    | 20 vials   |
| Ethanol Standard   | 1 x 500µl | 20 x 500µl |
| OxiRed Probe       | 1 x 200µl | 20 x 200µl |

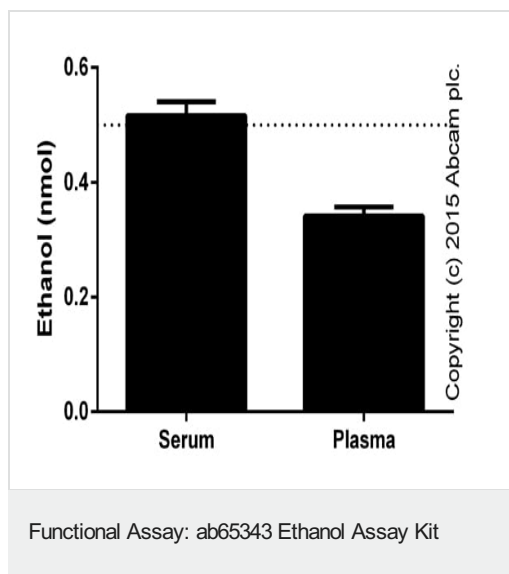
相关性Alcohol (ethanol C<sub>2</sub>H<sub>5</sub>OH) is a clear colorless liquid rapidly absorbed from the gastrointestinal tract and distributed through the body. Ethanol has a depressive effect on the central nervous system and because of its psychoactive effects, it is considered a drug. Ethanol is metabolized by the body as an energy-providing carbohydrate nutrient, as it is metabolized into acetyl CoA, an intermediate common with glucose that can be used for energy in the citric acid cycle (TCA) or for biosynthesis. Ethanol within the human body is converted into acetaldehyde by alcohol dehydrogenase and then into acetic acid by acetaldehyde dehydrogenase. Acetaldehyde, the product of the first step of the alcohol breakdown, is linked to most of the toxic clinical effects of alcohol.

图片

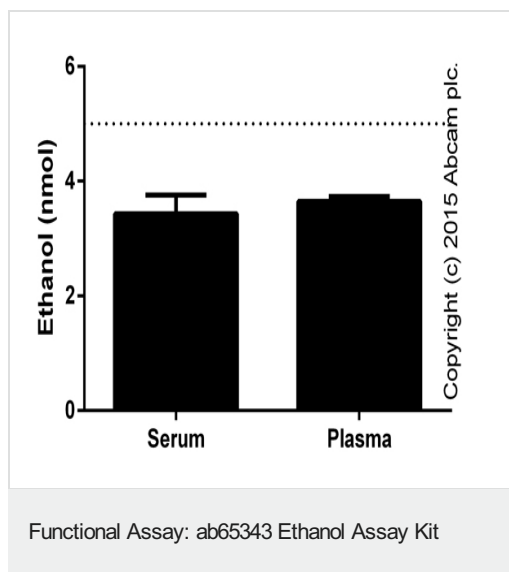


Ethanol in blood plasma was analyzed using ethanol assay kit (ab65343). Ethanol concentrations were determined 60 minutes after urethane administration in P0/1 mice and rats.

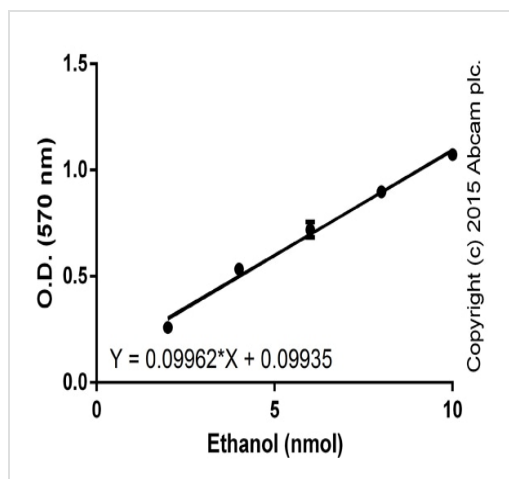
Functional studies - ab65343  
Zehendner C.M et al., PLoS One 8(5), Fig 5. Doi: 10.1371/journal.pone.0062628 Reproduced under the Creative Commons license <http://creativecommons.org/licenses/by/4.0/>



0.5 nmol of ethanol was added to diluted human biological fluids (1/10) and spiked samples were measured fluorimetrically (background subtracted, duplicates;  $\pm$  SD).

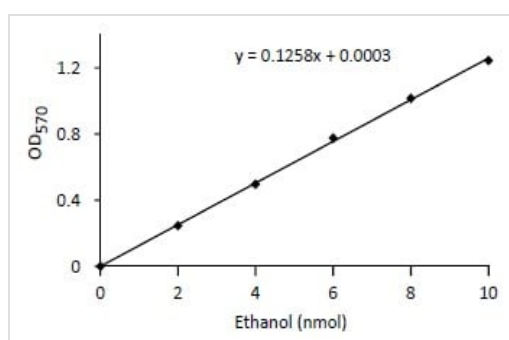


5 nmol of ethanol was added to diluted human biological fluids (1/10) and spiked samples were measured colourimetrically (background subtracted, duplicates;  $\pm$  SD).



Functional Assay: ab65343 Ethanol Assay Kit

Standard curves with background signal subtracted (duplicates; +/- SD).



Functional Studies - Ethanol Assay Kit (ab65343)

Ethanol Standard Curve (Background subtracted). Expected background (0 nmole EtOH standard) for the standard curve can be around ~0.6-0.7 OD, with a typical dynamic range of 0.7-1.2 after background subtraction. Ethanol standard was diluted as described and the assay was performed according to the kit instructions.

**Please note:** All products are "FOR RESEARCH USE ONLY. NOT FOR USE IN DIAGNOSTIC PROCEDURES"

### Our Abpromise to you: Quality guaranteed and expert technical support

- Replacement or refund for products not performing as stated on the datasheet
- Valid for 12 months from date of delivery
- Response to your inquiry within 24 hours
- We provide support in Chinese, English, French, German, Japanese and Spanish
- Extensive multi-media technical resources to help you
- We investigate all quality concerns to ensure our products perform to the highest standards

If the product does not perform as described on this datasheet, we will offer a refund or replacement. For full details of the Abpromise, please visit <https://www.abcam.cn/abpromise> or contact our technical team.

### Terms and conditions

- Guarantee only valid for products bought direct from Abcam or one of our authorized distributors