

Cell Cycle Assay Kit (Fluorometric - Green) ab112116

13 References 2 图像

概述

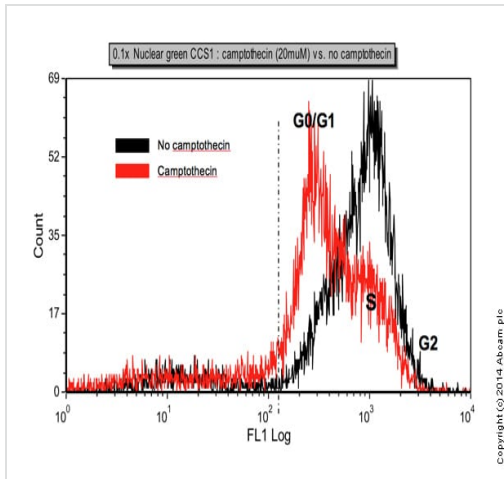
|       |   |
|-------|---|
| 产品名称  | Cell Cycle Assay试剂盒(Fluorometric - Green)   |
| 检测方法  | Fluorescent   |
| 样品类型  | Adherent cells, Suspension cells  |
| 种属反应性 | 与反应: Mammals, Other species   |
| 产品概述  | <p>Cell Cycle Assay Kit (Fluorometric - Green) (ab112116) is designed to monitor cell cycle progression and proliferation by using our proprietary Nuclear Green CCS1 in live cells. The percentage of cells in a given sample that are in G0/G1, S and G2/M phases, as well as the cells in the sub-G1 phase prior to apoptosis can be determined by flow cytometry. Cells stained with Nuclear Green CCS1 can be monitored with a flow cytometer at Ex/Em = 490 nm/520 nm (FL1 channel).</p> <p>Visit our <a href="#">FAQs page</a> for tips and troubleshooting.</p> |

性能

存放说明 Store at -20°C. Please refer to protocols.

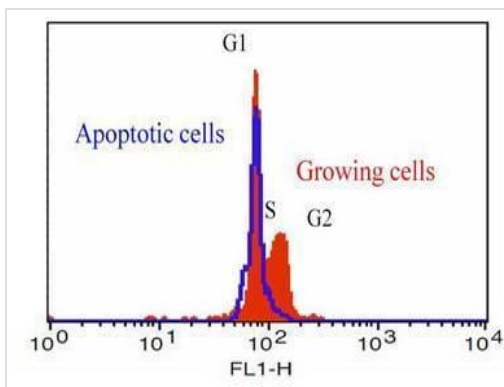
| 组件                 | 100 tests |
|--------------------|-----------|
| Assay Buffer       | 1 x 50ml  |
| Nuclear Green CCS1 | 1 x 250µl |

图片



Flow cytometry - ab112116 Cell Cycle Assay kit  
(Fluorometric-Green)

Histogram of HeLa cells (black: untreated cells, red : apoptotic cells) stained with 0.1x Nuclear Green CCS1



Flow Cytometry - Cell Cycle Assay Kit (Fluorometric  
- Green) (ab112116)

DNA profile in growing and camptothecin treated Jurkat cells.

Jurkat cells were treated without (red) or with 20  $\mu$ M camptothecin (blue) in a 37°C, 5% CO<sub>2</sub> incubator for ~8 hours, then dye loaded with 200X Green Fluorescence Probe for 60 minutes. The fluorescence intensity of 200X Green Fluorescence Probe was measured with a flow cytometer using the FL1 channel.

**Please note:** All products are "FOR RESEARCH USE ONLY. NOT FOR USE IN DIAGNOSTIC PROCEDURES"

### Our Abpromise to you: Quality guaranteed and expert technical support

- Replacement or refund for products not performing as stated on the datasheet
- Valid for 12 months from date of delivery
- Response to your inquiry within 24 hours
- We provide support in Chinese, English, French, German, Japanese and Spanish
- Extensive multi-media technical resources to help you

- We investigate all quality concerns to ensure our products perform to the highest standards

If the product does not perform as described on this datasheet, we will offer a refund or replacement. For full details of the Abpromise, please visit <https://www.abcam.cn/abpromise> or contact our technical team.

### **Terms and conditions**

---

- Guarantee only valid for products bought direct from Abcam or one of our authorized distributors