

# Angiogenesis Assay Kit (In Vitro) ab204726

[27 References](#) [2 图像](#)

### 概述

产品名称	Angiogenesis Assay试剂盒(In Vitro)
检测方法	Fluorescent
检测类型	Cell-based (qualitative)
检测时间	6h 00m
产品概述	Angiogenesis Assay Kit ab204726 provides a quick and robust method to measure the ability of endothelial cells to form three-dimensional tube-like structures <i>in vitro</i> in less than 18 hours. This tube formation assay provides a simple, easy to perform, qualitative tool for assessing angiogenesis.

#### Angiogenesis assay protocol summary:

- add extracellular matrix solution to empty culture plate and incubate for 1 hr at 37°C to allow the solution to form a gel
- plate cells onto the gel and add experimental treatment
- incubate cells for 4-18 hrs to allow tube formation
- remove incubation medium and wash cells / gel
- add staining dye and incubate for 30 min
- examine tube formation using light and fluorescence microscopy (green filter)

### 说明

This product is manufactured by BioVision, an Abcam company and was previously called K905 Angiogenesis (Tube Formation) Assay. K905-50 is the same size as the 50 test size of ab204726.

Angiogenesis is a physiological process that occurs during wound healing and normal development which involves the growth of new blood vessels from pre-existing vessels. These blood vessels form highly branched, tree-like tubular networks that ensure efficient and simultaneous transport of gases, liquids, nutrients, signaling molecules, and circulating cells between tissues and organs. Angiogenesis is complex and highly regulated, with tight coordination of cell proliferation, differentiation, migration, matrix adhesion, and cell-to-cell signaling. Angiogenesis is regulated by several factors, most importantly growth factors such as vascular endothelial growth factors (VEGFs) and platelet-derived growth factors (PDGFs).

### 平台

Fluorescence microscope

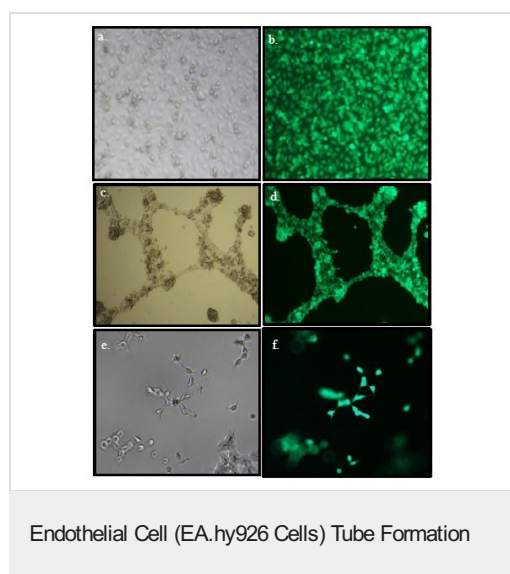
### 性能

## 存放说明

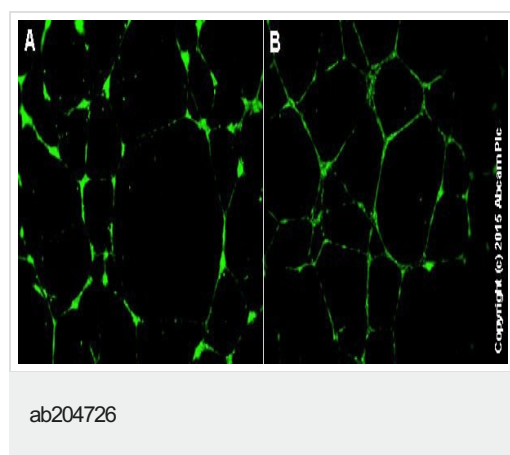
Store at -20°C. Please refer to protocols.

组件	50 tests
Extracellular Matrix Solution	2 x 1.25ml
Inhibitor (Suramin)	1 vial
Staining Dye Concentrate	1 x 25µl
Wash Buffer III	1 x 10ml

## 图片



Phase contrast (a, c, e) and fluorescent images (b, d, f) of endothelial cells in a tissue culture plate. (a, b) Endothelial cells grown without the Extracellular Matrix Gel, (c, d) Tube formation of endothelial cells grown on Extracellular Matrix gel. (e, f) endothelial cells grown on Extracellular Matrix gel treated with Suramin (10 µmol/L). Images were taken using Nikon TE2000 microscope.



HUVEC morphogenesis on Extracellular Matrix Gel. Cells ( $2 \times 10^4$ ) were plated per 1 cm<sup>2</sup> well precoated with Extracellular Matrix Gel and grown for 18 hours (A) in the specific medium alone (positive control) or containing (B) PMA 10 µmol/L.

**Please note:** All products are "FOR RESEARCH USE ONLY. NOT FOR USE IN DIAGNOSTIC PROCEDURES"

**Our Abpromise to you: Quality guaranteed and expert technical support**

- Replacement or refund for products not performing as stated on the datasheet

- Valid for 12 months from date of delivery
- Response to your inquiry within 24 hours
  
- We provide support in Chinese, English, French, German, Japanese and Spanish
- Extensive multi-media technical resources to help you
- We investigate all quality concerns to ensure our products perform to the highest standards

If the product does not perform as described on this datasheet, we will offer a refund or replacement. For full details of the Abpromise, please visit <https://www.abcam.cn/abpromise> or contact our technical team.

### **Terms and conditions**

---

- Guarantee only valid for products bought direct from Abcam or one of our authorized distributors