

Human Inflammation Antibody Array - Membrane (40 Targets) ab134003

[17 References](#) [5 图像](#)

概述

产品名称	人Inflammation抗体阵列-膜(40 Targets)
样品类型	Cell culture supernatant, Saliva, Milk, Urine, Serum, Plasma, Cell culture extracts, Other biological fluids, Whole Blood, Tissue Extracts, Cell Lysate, Cell culture media
检测类型	Semi-quantitative
种属反应性	与反应: Human
产品概述	ab134003 is for simultaneous detection of 40 Human Inflammatory Factors. Suitable for all sample types.

Targets: Eotaxin, Eotaxin-2, GCSF, GM-CSF, ICAM-1, IFN-gamma, I-309, IL-1alpha, IL-1beta, IL-2, IL-3, IL-4, IL-6, IL-6sR, IL-7, IL-8, IL-10, IL-11, IL-12p40, IL-12p70, IL-13, IL-15, IL-16, IL-17, IP-10, MCP-1, MCP-2, M-CSF, MIG, MIP-1alpha, MIP-1beta, MIP-1delta, RANTES, TGF-beta1, TNF-alpha, TNF-beta, sTNF RI, sTNF-RII, PDGF-BB, TIMP-2

Cytokine arrays are an antibody-pair-based assay, analogous to ELISA, but using a membrane as a substrate rather than a plate. Capture antibodies are supplied arrayed/spotted on a membrane with each pair of spots representing a different analyte. Sample is added (0.2-1ml of 1 sample to each membrane), and then paired biotinylated detector antibodies and streptavidin HRP. The cytokine array is analyzed using the same methods as a chemiluminescent western blot. Comparison between samples can be by eye or using densitometry software for a semi-quantitative comparison.

[Learn more about membrane antibody arrays](#)

说明
If you are interested in this cytokine array, arrays [ab133997](#), [ab169817](#), [ab133998](#), [ab169804](#), [ab169805](#) and [ab133996](#) may also be of interest.

A table listing all of our human membrane antibody cytokine arrays and other arrays and the analytes they measure is available [here](#).

Abcam has not and does not intend to apply for the REACH Authorisation of customers' uses of products that contain European Authorisation list (Annex XIV) substances.

It is the responsibility of our customers to check the necessity of application of REACH Authorisation, and any other relevant authorisations, for their intended uses.

经测试应用

适用于: Multiplex Protein Detection

性能

存放说明

Store at -20°C. Please refer to protocols.

组件	1 x 4 Membranes	1 x 8 Membranes
1,000X HRP-Conjugated Streptavidin	1 x 50µl	1 x 50µl
1X Blocking Buffer	1 x 25ml	2 x 25ml
20X Wash Buffer I	1 x 10ml	1 x 20ml
20X Wash Buffer II	1 x 10ml	1 x 20ml
2X Cell Lysis Buffer	1 x 10ml	1 x 16ml
8-Well Incubation Tray (with Lid)	1 unit	1 unit
Biotin-Conjugated Anti-Cytokines	2 vials	4 vials
Inflammation Antibody Array Membranes	4 units	8 units
Detection Buffer C	1 x 1.5ml	1 x 2.5ml
Detection Buffer D	1 x 1.5ml	1 x 2.5ml

应用

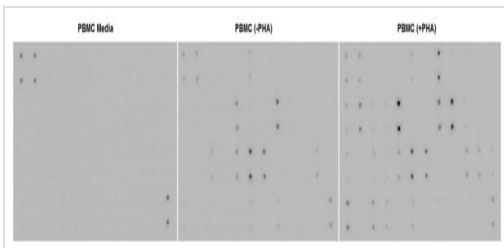
The Abpromise guarantee

Abpromise™承诺保证使用ab134003于以下的经测试应用

“应用说明”部分下显示的仅为推荐的起始稀释度;实际最佳的稀释度/浓度应由使用者检定。

应用	Ab评论	说明
Multiplex Protein Detection		Use at an assay dependent concentration.

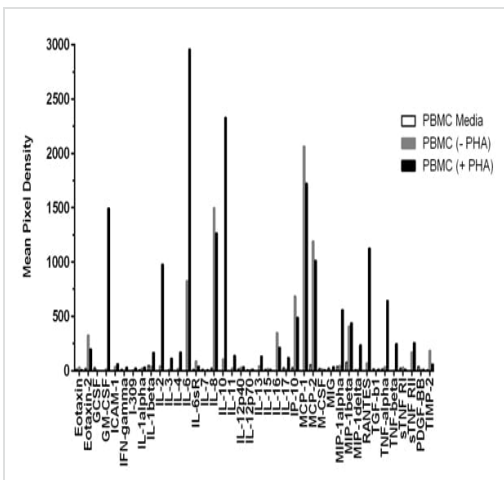
图片



Multiplex Protein Detection - Human Inflammation
Antibody Array - Membrane (40 Targets) (ab134003)

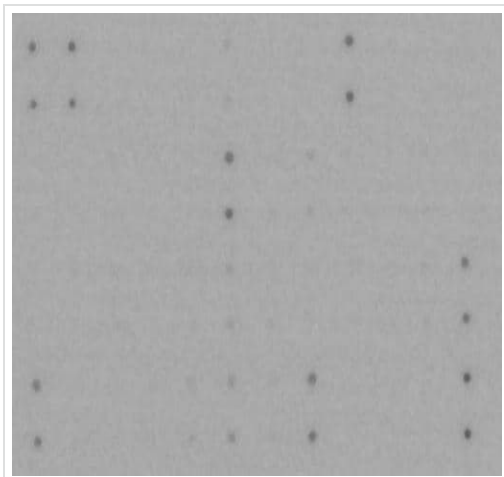
Human peripheral blood cells (1×10^6 cells/mL) were cultured in RPMI media supplemented with 10% fetal calf serum, 100 U/mL penicillin, and 100 mg/mL streptomycin sulfate. Cells were cultured unstimulated or stimulated with 10 mg/mL PHA.

Conditioned media was harvested after 48 hours, aliquoted and assayed using ab134003. Media alone was used as a negative control.



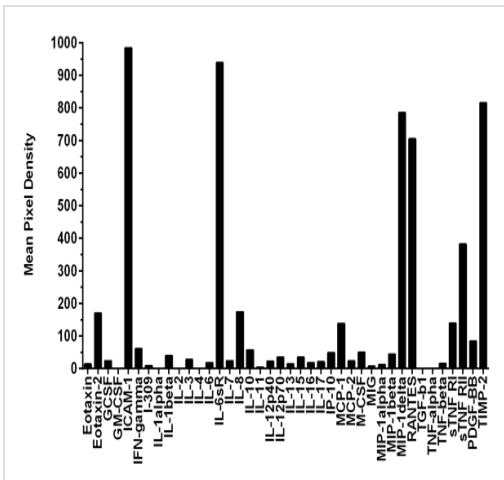
Quantification of Human Inflammation Antibody
Array

Conditioned media was harvested after 48 hours, aliquoted and assayed using ab134003. Media alone was used as a negative control. Mean pixel density was quantified using CCD camera software analysis.



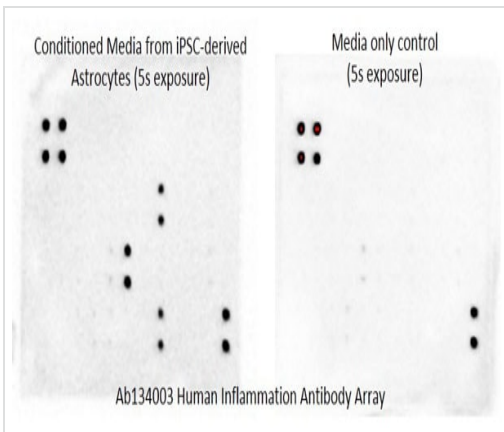
Multiplex Protein Detection - Human Inflammation
Antibody Array - Membrane (40 Targets) (ab134003)

Human serum from a pooled donor ($n=50$) sample was diluted to 25% and assayed using ab134003.



Human serum from a pooled donor (n=50) sample was diluted to 25% and assayed using ab134003. Mean pixel density was quantified using CCD camera software analysis.

Quantification of Human Inflammation Antibody Array



Left image: Conditioned media from iPSC-derived astrocytes; right image: Media only control.

Samples were incubated overnight at 4C as recommended and included the large volume wash. Images were captured using CCD camera for the exposure times indicated on the image.

Rating 5/5. Simple, sensitive and accurate method to detect multiple cytokines and growth factors from a single sample. The membranes were also consistent across the batch which allowed me to test several samples in parallel. Highly recommended.

Multiplex Protein Detection - Human Inflammation Antibody Array - Membrane (40 Targets) (ab134003)
This image is courtesy of an anonymous Abreview.

Please note: All products are "FOR RESEARCH USE ONLY. NOT FOR USE IN DIAGNOSTIC PROCEDURES"

Our Abpromise to you: Quality guaranteed and expert technical support

- Replacement or refund for products not performing as stated on the datasheet
- Valid for 12 months from date of delivery
- Response to your inquiry within 24 hours
- We provide support in Chinese, English, French, German, Japanese and Spanish
- Extensive multi-media technical resources to help you

- We investigate all quality concerns to ensure our products perform to the highest standards

If the product does not perform as described on this datasheet, we will offer a refund or replacement. For full details of the Abpromise, please visit <https://www.abcam.cn/abpromise> or contact our technical team.

Terms and conditions

- Guarantee only valid for products bought direct from Abcam or one of our authorized distributors