

# Human Growth Factor Antibody Array - Membrane (41 Targets) ab134002

[21 References](#) [6 图像](#)

### 概述

产品名称	人Growth Factor抗体阵列-膜(41 Targets)
样品类型	Cell culture supernatant, Saliva, Milk, Urine, Serum, Plasma, Cell culture extracts, Other biological fluids, Whole Blood, Tissue Extracts, Cell Lysate, Cell culture media
检测类型	Semi-quantitative
种属反应性	与反应: Human
产品概述	ab134002 is for simultaneous detection of 41 Human Growth Factors. Suitable for all sample types.

**Targets:** Amphiregulin, bFGF, EGF, EGF R, FGF-4, FGF-6, FGF-7, GCSF, GDNF, GM-CSF, HB-EGF, HGF, IGFBP-1, IGFBP-2, IGFBP-3, IGFBP-4, IGFBP-6, IGF-I, IGF-I SR, IGF-II, M-CSF, M-CSF R, beta-NGF, NT-3, NT-4, PDGF Ra, PDGF R $\beta$ , PDGF-AA, PDGF-AB, PDGF-BB, PLGF, SCF, SCF R, TGF-alpha, TGF-beta, TGF-beta2, TGF-beta3, VEGF-A, VEGF R2, VEGF R3, VEGF-D

Cytokine arrays are an antibody-pair-based assay, analogous to ELISA, but using a membrane as a substrate rather than a plate. Capture antibodies are supplied arrayed/spotted on a membrane with each pair of spots representing a different analyte. Sample is added (0.2-1ml of 1 sample to each membrane), and then paired biotinylated detector antibodies and streptavidin HRP. The cytokine array is analyzed using the same methods as a chemiluminescent western blot. Comparison between samples can be by eye or using densitometry software for a semi-quantitative comparison.

### [Learn more about membrane antibody arrays](#)

说明 If you are interested in this cytokine array, array [ab133998](#) may also be of interest.

**A table listing all of our human membrane antibody cytokine arrays and other arrays and the analytes they measure is available [here](#).**

Abcam has not and does not intend to apply for the REACH Authorisation of customers' uses of products that contain European Authorisation list (Annex XIV) substances. It is the responsibility of our customers to check the necessity of application of REACH Authorisation, and any other relevant authorisations, for their intended uses.

## 性能

## 存放说明

Store at -20°C. Please refer to protocols.

组件	1 x 4 Membranes	1 x 8 Membranes
1,000X HRP-Conjugated Streptavidin	1 x 50µl	1 x 50µl
20X Wash Buffer I	1 x 10ml	1 x 20ml
20X Wash Buffer II	1 x 10ml	1 x 20ml
2X Cell Lysis Buffer	1 x 10ml	1 x 16ml
8-Well Incubation Tray (with Lid)	1 unit	1 unit
Biotin-Conjugated Anti-Cytokines	2 vials	4 vials
1X Blocking Buffer	1 x 25ml	2 x 25ml
Detection Buffer C	1 x 1.5ml	1 x 2.5ml
Detection Buffer D	1 x 1.5ml	1 x 2.5ml
Growth Factor Antibody Array Membranes	4 units	8 units

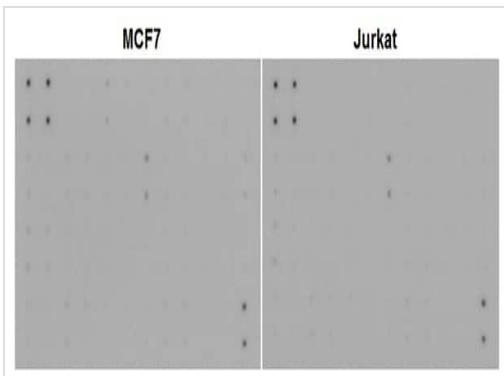
## 应用

**The Abpromise guarantee** **Abpromise™** 承诺保证使用 ab134002 于以下的经测试应用

“应用说明”部分 下显示的仅为推荐的起始稀释度;实际最佳的稀释度/浓度应由使用者检定。

应用	Ab评论	说明
<b>Multiplex Protein Detection</b>		Use at an assay dependent concentration.

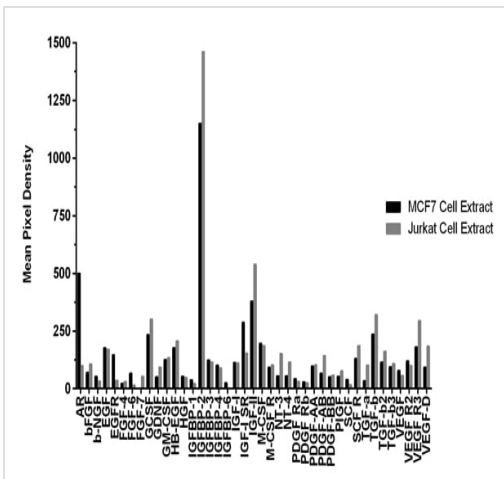
## 图片



Multiplex Protein Detection - Human Growth Factor Antibody Array - Membrane (41 Targets) (ab134002)

MCF7 cells (Human breast adenocarcinoma) were seeded at  $1 \times 10^6$  cells/mL and cultured in EMEM media supplemented with 10% fetal calf serum, 100 U/mL penicillin, and 100  $\mu$ g/mL streptomycin sulfate. Jurkat cells (Human T lymphocytes) were seeded at  $1 \times 10^6$  cells/mL and cultured in RPMI media supplemented with 10% fetal calf serum, 100 U/mL penicillin, and 100  $\mu$ g/mL streptomycin sulfate.

Cells were cultured for 48 hours, washed and harvested. Cell and tissue extracts were prepared and 250  $\mu$ g of total protein was assayed using ab134002.



Quantification of Human Growth Factor Antibody Array

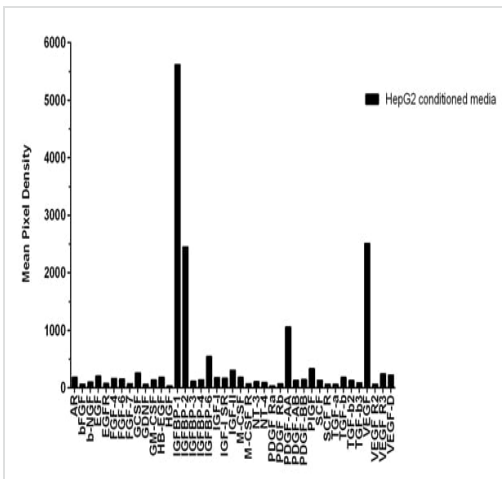
Cells were cultured for 48 hours, washed and harvested. Cell and tissue extracts were prepared and 250  $\mu$ g of total protein was assayed using ab134002. Mean pixel density was quantified using CCD camera software analysis.



Multiplex Protein Detection - Human Growth Factor  
Antibody Array - Membrane (41 Targets) (ab134002)

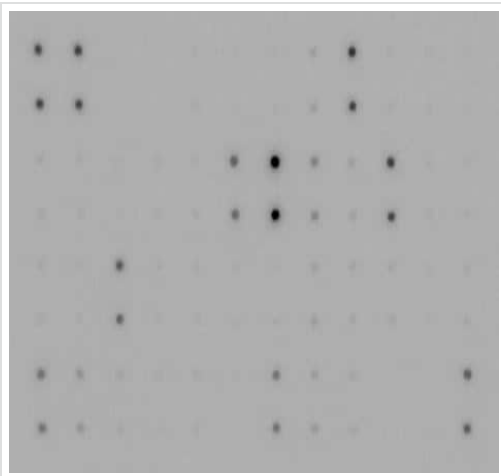
HepG2 cells (Human hepatocellular carcinoma) were seeded at  $1 \times 10^6$  cells/mL and cultured in EMEM media supplemented with 10% fetal calf serum, 100 U/mL penicillin, and 100  $\mu$ g/mL streptomycin sulfate.

Conditioned media was harvested after 48 hours, aliquoted and assayed using ab134002.



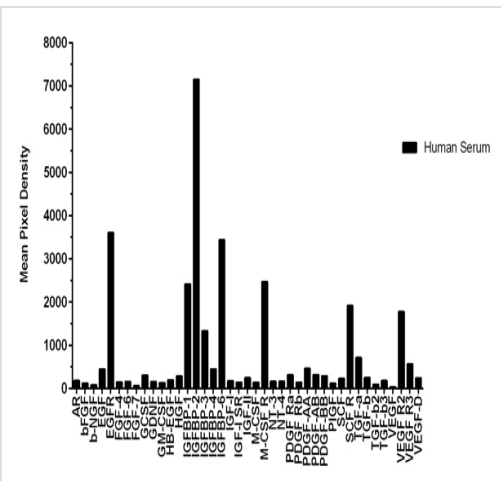
Quantification of Human Growth Factor Antibody  
Array

Conditioned media was harvested after 48 hours, aliquoted and assayed using ab134002. Mean pixel density was quantified using CCD camera software analysis.



Multiplex Protein Detection - Human Growth Factor  
Antibody Array - Membrane (41 Targets) (ab134002)

Human serum from a pooled donor (n=50) sample was diluted to 25% and assayed using ab134002.



Quantification of Human Growth Factor Antibody  
Array

Human serum from a pooled donor (n=50) sample was diluted to 25% and assayed using ab134002. Mean pixel density was quantified using CCD camera software analysis.

**Please note:** All products are "FOR RESEARCH USE ONLY. NOT FOR USE IN DIAGNOSTIC PROCEDURES"

### Our Abpromise to you: Quality guaranteed and expert technical support

- Replacement or refund for products not performing as stated on the datasheet
- Valid for 12 months from date of delivery
- Response to your inquiry within 24 hours
- We provide support in Chinese, English, French, German, Japanese and Spanish

- Extensive multi-media technical resources to help you
- We investigate all quality concerns to ensure our products perform to the highest standards

If the product does not perform as described on this datasheet, we will offer a refund or replacement. For full details of the Abpromise, please visit <https://www.abcam.cn/abpromise> or contact our technical team.

### **Terms and conditions**

---

- Guarantee only valid for products bought direct from Abcam or one of our authorized distributors