

Human EGFR Phosphorylation Antibody Array - Membrane (17 Targets) ab134005

[5 References](#) [2 图像](#)

概述

产品名称	人EGFR Phosphorylation抗体阵列-膜(17 Targets)
样品类型	Tissue Extracts, Cell Lysate
检测类型	Semi-quantitative
种属反应性	与反应: Human
产品概述	ab134005 is for simultaneous detection of the relative levels of 17 different Phosphorylated Human EGF Receptors. Suitable for cell and tissue lysates only.

Targets: EGFR (Tyr845), EGFR (Tyr992), EGFR (Tyr1045), EGFR (Tyr1068), EGFR (Tyr1086), EGFR (Tyr1148), EGFR (Tyr1173), EGFR (Ser1046/1047), EGFR (Ser1070), ErbB2 (Tyr877), ErbB2 (Tyr1112), ErbB2 (Tyr 1221/1222), ErbB2 (Tyr1248), ErbB2 (Thr686), ErbB2 (Ser1113), ErbB3 (Tyr1289), ErbB4 (Tyr1284)

[Learn more about membrane antibody arrays](#)

说明 Abcam has not and does not intend to apply for the REACH Authorisation of customers' uses of products that contain European Authorisation list (Annex XIV) substances. It is the responsibility of our customers to check the necessity of application of REACH Authorisation, and any other relevant authorisations, for their intended uses.

经测试应用 适用于: Multiplex Protein Detection

性能

存放说明 Store at -20°C. Please refer to protocols.

组件	1 x 4 Membranes	1 x 8 Membranes	1 x 2 Membranes
1,000X HRP-Conjugated Streptavidin	1 x 18µl	1 x 18µl	1 x 18µl
100X Phosphatase Inhibitor Cocktail Set I Concentrate	1 vial	2 vials	1 vial

组件	1 x 4 Membranes	1 x 8 Membranes	1 x 2 Membranes
1X Blocking Buffer	1 x 25ml	2 x 25ml	1 x 25ml
20X Wash Buffer I	1 x 30ml	1 x 30ml	1 x 30ml
20X Wash Buffer II	1 x 30ml	1 x 30ml	1 x 30ml
2X Cell Lysis Buffer	1 x 5ml	1 x 5ml	1 x 5ml
8-Well Incubation Tray (with Lid)	1 unit	1 unit	1 unit
Cocktail of Biotin-Conjugated Anti-EGFR	2 vials	4 vials	1 vial
Detection Buffer C	1 x 1.5ml	1 x 2.5ml	1 x 1.5ml
Detection Buffer D	1 x 1.5ml	1 x 2.5ml	1 x 1.5ml
EGFR Phosphorylation Antibody Array Membranes	4 units	8 units	2 units
Phosphatase Inhibitor Cocktail Set II	1 vial	2 vials	1 vial
Protease Inhibitor Cocktail	1 vial	2 vials	1 vial

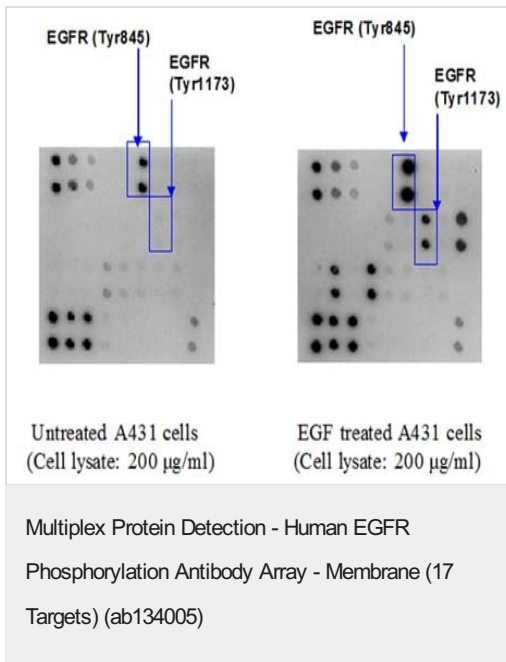
应用

The Abpromise guarantee **Abpromise™** 承诺保证使用 ab134005 于以下的经测试应用

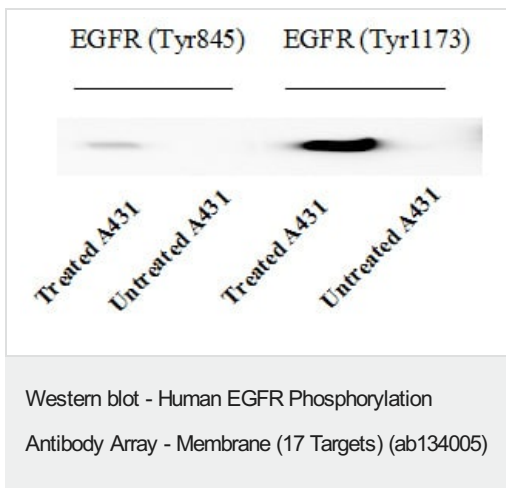
“应用说明”部分 下显示的仅为推荐的起始稀释度；实际最佳的稀释度/浓度应由使用者检定。

应用	Ab 评论	说明
Multiplex Protein Detection		Use at an assay dependent concentration.

图片



Human epidermoid carcinoma cell line, A431 cells that were 80-90% confluent were serum starved overnight, then exposed to 100 ng/ml EGF for 20 minutes at 37°C. Control cells were serum starved without the subsequent stimulation with EGF. Cell lysates were prepared according to the protocol. To use ab134005 Human EGFR Phosphorylation Antibody Array - Membrane, treated or untreated cell lysate was added into antibody array membrane. The antibody array membranes were washed and cocktail of biotinylated anti-EGFR was used to detect phosphorylated proteins on activated receptors. After incubation with HRP-Conjugated Streptavidin, the signals were visualized by chemiluminescence.



Western blot analysis of extracts from 100 ng/ml hEGF treated A431 cells or untreated A431 cells. Phospho-EGFR (Tyr845) or Phospho-EGFR (Tyr1173) antibodies were used in this assay.

Please note: All products are "FOR RESEARCH USE ONLY. NOT FOR USE IN DIAGNOSTIC PROCEDURES"

Our Abpromise to you: Quality guaranteed and expert technical support

- Replacement or refund for products not performing as stated on the datasheet
- Valid for 12 months from date of delivery
- Response to your inquiry within 24 hours
- We provide support in Chinese, English, French, German, Japanese and Spanish
- Extensive multi-media technical resources to help you
- We investigate all quality concerns to ensure our products perform to the highest standards

If the product does not perform as described on this datasheet, we will offer a refund or replacement. For full details of the Abpromise, please visit <https://www.abcam.cn/abpromise> or contact our technical team.

Terms and conditions

- Guarantee only valid for products bought direct from Abcam or one of our authorized distributors