

Cytokine Array - Human Cytokine Antibody Array (Membrane, 42 Targets) ab133997

[24 References](#) [5 图像](#)

概述

产品名称	细胞因子阵列-人Cytokine抗体阵列(Membrane, 42 Targets)
样品类型	Cell culture supernatant, Saliva, Milk, Urine, Serum, Plasma, Cell culture extracts, Other biological fluids, Whole Blood, Tissue Extracts, Cell Lysate, Cell culture media
检测类型	Semi-quantitative
种属反应性	与反应: Human
产品概述	ab133997 is a cytokine array to be used for the simultaneous detection of 42 Human cytokines. It is suitable for all sample types.

Targets: ENA-78, GCSF, GM-CSF, GRO, GRO-alpha, I-309, IL-1alpha, IL-1beta, IL-2, IL-3, IL-4, IL-5, IL-6, IL-7, IL-8, IL-10, IL-12 p40/p70, IL-13, IL-15, IFN-gamma, MCP-1, MCP-2, MCP-3, MCSF, MDC, MIG, MIP-1delta, RANTES, SCF, SDF-1, TARC, TGF-beta1, TNF-alpha, TNF-beta, EGF, IGF-I, Angiogenin, Oncostatin M, Thrombopoietin, VEGF-A, PDGF BB, Leptin

Cytokine arrays are an antibody-pair-based assay, analogous to ELISA, but using a membrane as a substrate rather than a plate. Capture antibodies are supplied arrayed/spotted on a membrane with each pair of spots representing a different analyte. Sample is added (0.2-1ml of 1 sample to each membrane), and then paired biotinylated detector antibodies and streptavidin HRP. The cytokine array is analyzed using the same methods as a chemiluminescent western blot. Comparison between samples can be by eye or using densitometry software for a semi-quantitative comparison.

[Learn more about cytokine arrays and other membrane antibody arrays](#)

说明 If you are interested in this cytokine array, [cytokine array ab133998](#), [ab133996](#), [ab169817](#), [ab134003](#), [ab134000](#), [ab169804](#) and [ab169805](#) may also be of interest.

A table listing all of our human membrane antibody cytokine arrays and other arrays and the analytes they measure is available [here](#).

Abcam has not and does not intend to apply for the REACH Authorisation of customers' uses of products that contain European Authorisation list (Annex XIV) substances.

It is the responsibility of our customers to check the necessity of application of REACH Authorisation, and any other relevant authorisations, for their intended uses.

经测试应用

适用于: Multiplex Protein Detection

性能

存放说明

Store at -20°C. Please refer to protocols.

组件	1 x 4 Membranes	1 x 8 Membranes
1,000X HRP-Conjugated Streptavidin	1 x 50µl	1 x 50µl
1X Blocking Buffer	1 x 25ml	2 x 25ml
20X Wash Buffer I	1 x 10ml	1 x 20ml
20X Wash Buffer II	1 x 10ml	1 x 20ml
2X Cell Lysis Buffer	1 x 10ml	1 x 16ml
8-Well Incubation Tray (with Lid)	1 unit	1 unit
Biotin-Conjugated Anti-Cytokines	2 vials	4 vials
Cytokine Antibody Array Membranes	4 units	8 units
Detection Buffer C	1 x 1.5ml	1 x 2.5ml
Detection Buffer D	1 x 1.5ml	1 x 2.5ml

应用

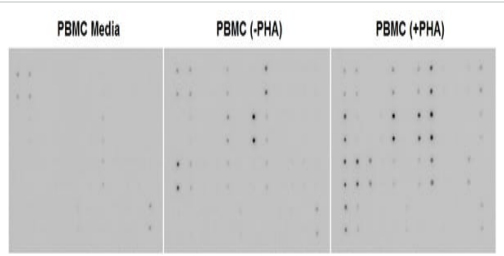
The Abpromise guarantee

Abpromise™承诺保证使用ab133997于以下的经测试应用

“应用说明”部分 下显示的仅为推荐的起始稀释度;实际最佳的稀释度/浓度应由使用者检定。

应用	Ab评论	说明
Multiplex Protein Detection		Use at an assay dependent concentration.

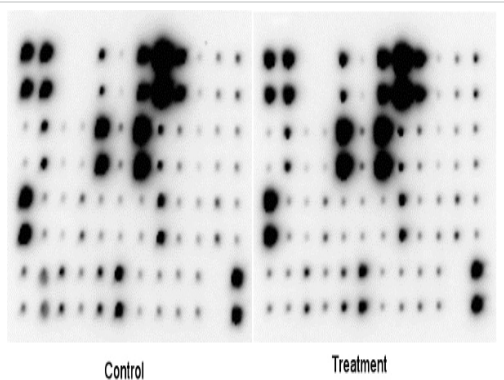
图片



Multiplex Protein Detection - Human Cytokine Array
- Membrane Antibody Array

Human peripheral blood cells (1×10^6 cells/mL) were cultured in RPMI media supplemented with 10% fetal calf serum, 100 U/mL penicillin, and 100 mg/mL streptomycin sulfate.

Cells were cultured unstimulated or stimulated with 10 μ g/mL PHA. Conditioned media was harvested after 48 hours, aliquoted and assayed using ab133997. Media alone was used as a negative control.

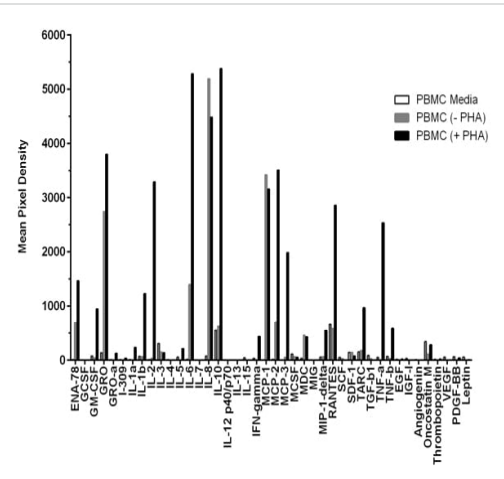


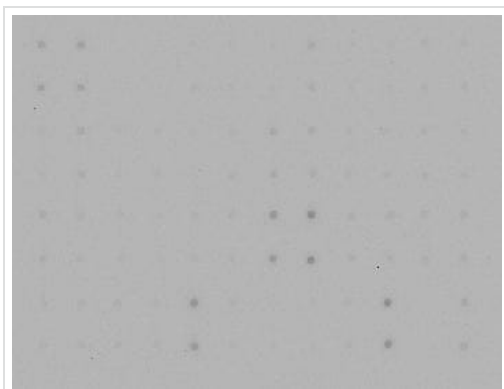
Cytokine array testing image - Abreview
This image is courtesy of an anonymous Abreview.

The antibody array was used to determine the change in expression of cytokines related to cell proliferation.

One million Human breast cancer cells (MCF7) were cultured in a 10mm dish for 48 hours (in 8ml of RPMI-1640 medium) and were then treated with 5 mM Compound X (not disclosed) for 48 hours. The Abcam protocol was followed for the rest of the procedure. 1 mL of supernatant of culture medium was used for sample incubation (4°C overnight).

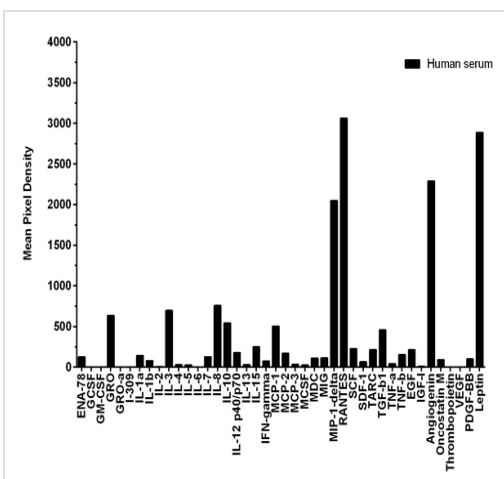
Rating: 4.5/5





Multiplex Protein Detection - Human Cytokine Array
- (membrane antibody array) (ab133997)

Human serum from a pooled donor (n=50) sample was diluted to 50% and assayed using ab133997.



- We investigate all quality concerns to ensure our products perform to the highest standards

If the product does not perform as described on this datasheet, we will offer a refund or replacement. For full details of the Abpromise, please visit <https://www.abcam.cn/abpromise> or contact our technical team.

Terms and conditions

- Guarantee only valid for products bought direct from Abcam or one of our authorized distributors