

Product datasheet

Anti-p51B antibody ab2505

1 图像

概述

产品名称	Anti-p51B抗体
描述	兔多克隆抗体to p51B
宿主	Rabbit
特异性	This antibody is specific for p51B. It does not cross react with p51A
经测试应用	适用于: ICC, WB
种属反应性	与反应: Mouse, Human
免疫原	Synthetic peptide: CNFDMDARRNKQQRKEEGE , corresponding to C terminal amino acids 662-680 of Human p51B. Run BLAST with Run BLAST with
阳性对照	Human Cell Line K562.

性能

形式	Liquid
存放说明	Shipped at 4°C. Upon delivery aliquot and store at -20°C or -80°C. Avoid repeated freeze / thaw cycles.
存储溶液	PBS, 1mg/ml BSA, 0.1% sodium azide, pH7.2
纯度	Immunogen affinity purified
克隆	多克隆
同种型	IgG

应用

Our [Abpromise guarantee](#) covers the use of **ab2505** in the following tested applications. The application notes include recommended starting dilutions; optimal dilutions/concentrations should be determined by the end user.

应用	Ab评论	说明
ICC		1/300.

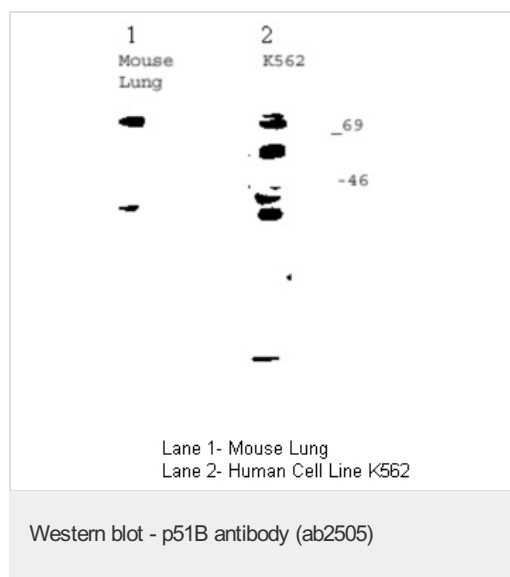
应用	Ab评论	说明
WB		1/1000. Detects a band of approximately 55 kDa (predicted molecular weight: 51 kDa).

靶标

相关性 p51 acts as a sequence specific DNA binding transcriptional activator or repressor. The isoforms contain a varying set of transactivation and auto-regulating transactivation inhibiting domains thus showing an isoform specific activity. May be required in conjunction with TP73/p73 for initiation of TP53/p53 dependent apoptosis in response to genotoxic insults and the presence of activated oncogenes. Involved in Notch signaling by probably inducing JAG1 and JAG2. Plays a role in the regulation of epithelial morphogenesis. The ratio of DeltaN-type and TA*-type isoforms may govern the maintenance of epithelial stem cell compartments and regulate the initiation of epithelial stratification from the undifferentiated embryonal ectoderm. Required for limb formation from the apical ectodermal ridge.

细胞定位 Nuclear

图片



ab2505 detects an approximately 75kDa protein in mouse lung. As expected, most of the p51B protein in the human K562 tumour cell line is degraded.

ab2505 detects an approximately 75kDa protein in mouse lung. As expected, most of the p51B protein in the human K562 tumour cell line is degraded.

Please note: All products are "FOR RESEARCH USE ONLY AND ARE NOT INTENDED FOR DIAGNOSTIC OR THERAPEUTIC USE"

Our Abpromise to you: Quality guaranteed and expert technical support

- Replacement or refund for products not performing as stated on the datasheet
- Valid for 12 months from date of delivery
- Response to your inquiry within 24 hours
- We provide support in Chinese, English, French, German, Japanese and Spanish
- Extensive multi-media technical resources to help you
- We investigate all quality concerns to ensure our products perform to the highest standards

If the product does not perform as described on this datasheet, we will offer a refund or replacement. For full details of the Abpromise, please visit <http://www.abcam.cn/abpromise> or contact our technical team.

Terms and conditions

- Guarantee only valid for products bought direct from Abcam or one of our authorized distributors