

Product datasheet

Anti-p38 antibody ab27986

★★★★★ 2 Abreviews 14 References 2 图像

概述

产品名称	Anti-p38抗体
描述	兔多克隆抗体to p38
宿主	Rabbit
特异性	ab27986 detects total p38 MAP kinase. Does not cross react with either JNK/SAPK or p44/42 MAP kinase.
经测试应用	适用于: WB, IP, IHC-Fr
种属反应性	与反应: Mouse, Rat, Human
免疫原	Synthetic peptide (Human)(Peptide available as ab53314 .)
阳性对照	Jurkat cell lysate

性能

形式	Liquid
存放说明	Shipped at 4°C. Upon delivery aliquot. Avoid freeze / thaw cycle.
存储溶液	Preservative: 0.02% Thimerosal (merthiolate) Constituents: 50% Glycerol, 1% BSA, PBS
纯度	Immunogen affinity purified
克隆	多克隆
同种型	IgG

应用

Our [Abpromise guarantee](#) covers the use of **ab27986** in the following tested applications.

The application notes include recommended starting dilutions; optimal dilutions/concentrations should be determined by the end user.

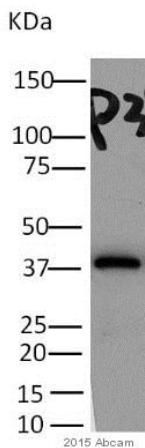
应用	Ab评论	说明
WB	★★★★★	Use a concentration of 1 - 2 µg/ml. Detects a band of approximately 38 kDa (predicted molecular weight: 41 kDa). Can be blocked with p38 peptide (ab53314) .

应用	Ab评论	说明
IP		Use a concentration of 10 - 20 µg/ml.
IHC-Fr		Use at an assay dependent concentration.

靶标

功能	Responds to activation by environmental stress, pro-inflammatory cytokines and lipopolysaccharide (LPS) by phosphorylating a number of transcription factors, such as ELK1 and ATF2 and several downstream kinases, such as MAPKAPK2 and MAPKAPK5. Plays a critical role in the production of some cytokines, for example IL-6. May play a role in stabilization of EPO mRNA during hypoxic stress. Isoform Mxi2 activation is stimulated by mitogens and oxidative stress and only poorly phosphorylates ELK1 and ATF2. Isoform Exip may play a role in the early onset of apoptosis.
组织特异性	Brain, heart, placenta, pancreas and skeletal muscle. Expressed to a lesser extent in lung, liver and kidney.
序列相似性	Belongs to the protein kinase superfamily. CMGC Ser/Thr protein kinase family. MAP kinase subfamily. Contains 1 protein kinase domain.
结构域	The TXY motif contains the threonine and tyrosine residues whose phosphorylation activates the MAP kinases.
翻译后修饰	Dually phosphorylated on Thr-180 and Tyr-182, which activates the enzyme. Phosphorylated upon DNA damage, probably by ATM or ATR.
细胞定位	Cytoplasm. Nucleus.

图片



Western blot - Anti-p38 antibody (ab27986)

This image is courtesy of an anonymous abreview.

Anti-p38 antibody (ab27986) at 1/500 dilution
+ mouse retina whole tissue lysate at 40 µg

Secondary

Polyclonal Goat anti-rabbit IgG-HRP at 1/200 dilution

Developed using the ECL technique.

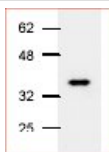
Performed under non-reducing conditions.

Predicted band size: 41 kDa

Observed band size: 38 kDa

Exposure time: 2 hours

Blocking buffer: 3% BSA



Western blot - Anti-p38 antibody (ab27986)

Anti-p38 antibody (ab27986) at 2 µg/ml
(Jurkat cell lysate)

Predicted band size: 41 kDa

Observed band size: 38 kDa

Please note: All products are "FOR RESEARCH USE ONLY AND ARE NOT INTENDED FOR DIAGNOSTIC OR THERAPEUTIC USE"

Our Abpromise to you: Quality guaranteed and expert technical support

- Replacement or refund for products not performing as stated on the datasheet
- Valid for 12 months from date of delivery
- Response to your inquiry within 24 hours
- We provide support in Chinese, English, French, German, Japanese and Spanish
- Extensive multi-media technical resources to help you
- We investigate all quality concerns to ensure our products perform to the highest standards

If the product does not perform as described on this datasheet, we will offer a refund or replacement. For full details of the Abpromise, please visit <http://www.abcam.cn/abpromise> or contact our technical team.

Terms and conditions

- Guarantee only valid for products bought direct from Abcam or one of our authorized distributors