

Product datasheet

Anti-ospC antibody ab106083

1 图像

概述

产品名称	Anti-ospC抗体
描述	兔多克隆抗体to ospC
宿主	Rabbit
特异性	cross-reactivity with ospC from <i>Borrelia burgdorferi</i> , <i>afzelii</i> , and <i>valaisiana</i> sources based on 100% homology with the immunizing sequence. Partial reactivity is expected against <i>B. japonica</i> and <i>americana</i> sources based on 94% homology
经测试应用	适用于: WB
种属反应性	与反应: Other
免疫原	MBP-fusion protein corresponding to <i>Borrelia burgdorferi</i> ospC protein.
阳性对照	<i>Borrelia burgdorferi</i> ospC protein.

性能

形式	Liquid
存放说明	Shipped at 4°C. Upon delivery aliquot. Store at -20°C or -80°C. Avoid freeze / thaw cycle.
存储溶液	pH: 7.20 Preservative: 0.01% Sodium azide Constituents: 0.42% Potassium phosphate, 0.88% Sodium chloride
纯度	Protein A purified
纯化说明	ab106083 is cross-adsorbed against MBP from monospecific antiserum by chromatography.
克隆	多克隆
同种型	IgG

应用

Our [Abpromise guarantee](#) covers the use of **ab106083** in the following tested applications.

The application notes include recommended starting dilutions; optimal dilutions/concentrations should be determined by the end user.

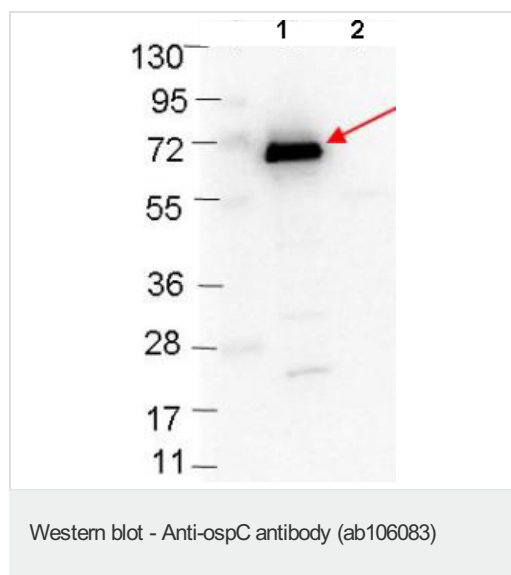
应用	Ab评论	说明
WB		1/1000. Predicted molecular weight: 22 kDa.

## 靶标

**相关性** Outer Surface Protein C, or ospC, is a 20.7 kDa immunogenic protein on the outer surface of the spirochete *Borrelia burgdorferi*. Its function is not known, but it is located with lipid-anchoring sites on the outer cell membrane.

**细胞定位** Cell outer membrane; Lipid-anchor.

## 图片



**All lanes** : Anti-ospC antibody (ab106083) at 1/1000 dilution

**Lane 1** : MBP-ospC fusion protein

**Lane 2** : MBP alone

Lysates/proteins at 0.1 µg per lane.

### Secondary

**All lanes** : Goat-anti-Rabbit HRP at 1/40000 dilution

**Predicted band size:** 22 kDa

4-20% gel.

**Please note:** All products are "FOR RESEARCH USE ONLY AND ARE NOT INTENDED FOR DIAGNOSTIC OR THERAPEUTIC USE"

## Our Abpromise to you: Quality guaranteed and expert technical support

- Replacement or refund for products not performing as stated on the datasheet
- Valid for 12 months from date of delivery
- Response to your inquiry within 24 hours
- We provide support in Chinese, English, French, German, Japanese and Spanish
- Extensive multi-media technical resources to help you
- We investigate all quality concerns to ensure our products perform to the highest standards

If the product does not perform as described on this datasheet, we will offer a refund or replacement. For full details of the Abpromise, please visit <http://www.abcam.cn/abpromise> or contact our technical team.

## Terms and conditions

---

- Guarantee only valid for products bought direct from Abcam or one of our authorized distributors